

Product Name: AP2M1 Mouse Monoclonal Antibody**Catalog #: AMM81887**

For research use only.

Summary

Description	Mouse monoclonal Antibody
Host	Mouse
Application	WB,ELISA
Reactivity	Human,Monkey
Conjugation	Unconjugated
Modification	Unmodified
Isotype	Mouse IgG1
Clonality	Monoclonal
Form	Liquid
Concentration	1mg/ml
Storage	Aliquot and store at -20°C (valid for 12 months). Avoid freeze/thaw cycles.
Shipping	Ice bags
Buffer	Purified antibody in PBS with 0.05% sodium azide
Purification	Affinity Purification

Application

Dilution Ratio	WB 1:300-1:1000,ELISA 1:5000-1:20000
Molecular Weight	49.7kDa

Antigen Information

Gene Name	AP2M1
Alternative Names	mu2; AP50; CLAPM1
Gene ID	1173.0
SwissProt ID	Q96CW1
Immunogen	Purified recombinant fragment of human AP2M1 (AA: 298-435) expressed in E. Coli.

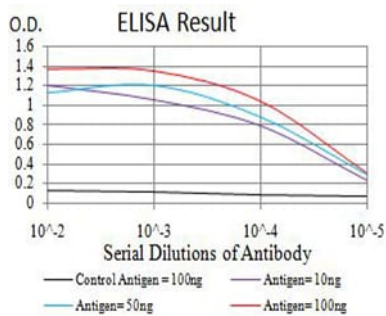
Background

This gene encodes a subunit of the heterotetrameric coat assembly protein complex 2 (AP2), which belongs to the adaptor complexes medium subunits family. The encoded protein is required for the activity of a vacuolar ATPase, which is responsible for proton pumping occurring in the acidification of endosomes and lysosomes. The encoded protein may also play an

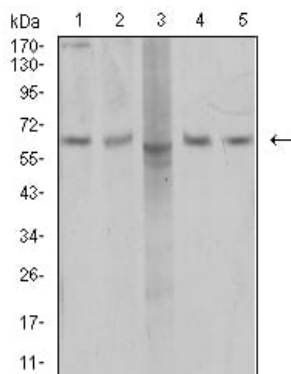
important role in regulating the intracellular trafficking and function of CTLA-4 protein. Three transcript variants encoding different isoforms have been found for this gene.

Research Area

Image Data



Black line: Control Antigen (100 ng);Purple line: Antigen (10ng); Blue line: Antigen (50 ng); Red line:Antigen (100 ng)



Western blot analysis using AP2M1 mouse mAb against COS7 (1), SK-Br-3 (2), MCF-7 (3), T47D (4), and HEK293 (5) cell lysate.