
Product Name: ATP2A1 Mouse Monoclonal Antibody**Catalog #: AMM81861**

For research use only.

Summary

Description	Mouse monoclonal Antibody
Host	Mouse
Application	WB,ELISA,FC
Reactivity	Human,Mouse,Monkey
Conjugation	Unconjugated
Modification	Unmodified
Isotype	Mouse IgG1
Clonality	Monoclonal
Form	Liquid
Concentration	1mg/ml
Storage	Aliquot and store at -20°C (valid for 12 months). Avoid freeze/thaw cycles.
Shipping	Ice bags
Buffer	Purified antibody in PBS with 0.05% sodium azide
Purification	Affinity Purification

Application

Dilution Ratio	WB 1:500-1:2000,ELISA 1:5000-1:20000,FC 1:200-1:400
Molecular Weight	110kDa

Antigen Information

Gene Name	ATP2A1
Alternative Names	ATP2A; SERCA1
Gene ID	487.0
SwissProt ID	O14983
Immunogen	Purified recombinant fragment of human ATP2A1 (AA: 487-631) expressed in E. Coli.

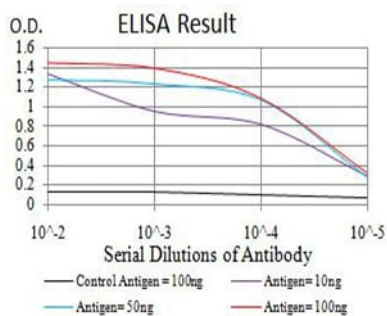
Background

This gene encodes one of the SERCA Ca(2+)-ATPases, which are intracellular pumps located in the sarcoplasmic or endoplasmic reticula of muscle cells. This enzyme catalyzes the hydrolysis of ATP coupled with the translocation of calcium from the cytosol to the sarcoplasmic reticulum lumen, and is involved in muscular excitation and contraction. Mutations in this gene cause some

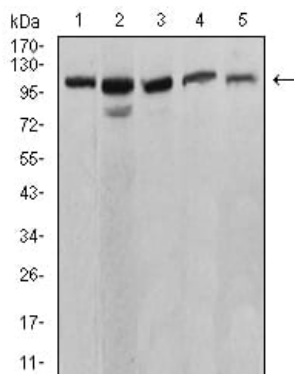
autosomal recessive forms of Brody disease, characterized by increasing impairment of muscular relaxation during exercise. Alternative splicing results in three transcript variants encoding different isoforms.

Research Area

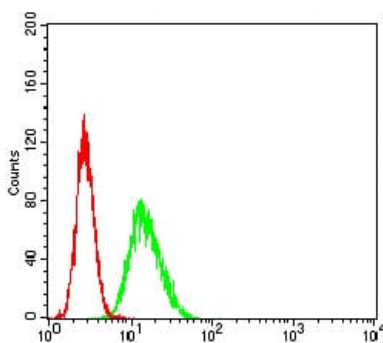
Image Data



Black line: Control Antigen (100 ng); Purple line: Antigen (10ng); Blue line: Antigen (50 ng); Red line: Antigen (100 ng)



Western blot analysis using ATP2A1 mouse mAb against C2C12 (1), COS7 (2), HeLa (3), K562 (4), and Jurkat (5) cell lysate.



Flow cytometric analysis of HeLa cells using ATP2A1 mouse mAb (green) and negative control (red).