

Product Name: IGLC2 Mouse Monoclonal Antibody**Catalog #: AMM81844**

For research use only.

Summary

Description	Mouse monoclonal Antibody
Host	Mouse
Application	IHC,ELISA
Reactivity	Human
Conjugation	Unconjugated
Modification	Unmodified
Isotype	Mouse IgG1
Clonality	Monoclonal
Form	Liquid
Concentration	1mg/ml
Storage	Aliquot and store at -20°C (valid for 12 months). Avoid freeze/thaw cycles.
Shipping	Ice bags
Buffer	Purified antibody in PBS with 0.05% sodium azide
Purification	Affinity Purification

Application

Dilution Ratio	IHC 1:200-1:1000,ELISA 1:5000-1:20000
Molecular Weight	11.3kDa

Antigen Information

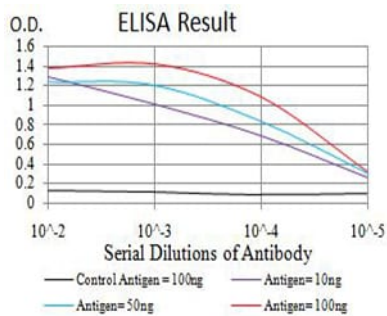
Gene Name	IGLC2
Alternative Names	IGLC
Gene ID	3538.0
SwissProt ID	P0DOY2
Immunogen	Purified recombinant fragment of human IGLC2 (AA: 1-106) expressed in E. Coli.

Background

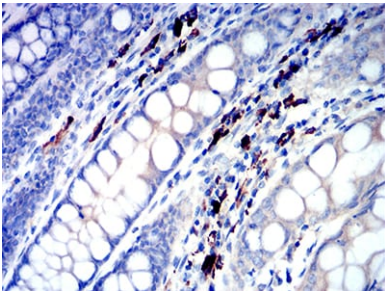
IGLC2 (Immunoglobulin Lambda Constant 2) is a Protein Coding gene. Among its related pathways are Interleukin-3, 5 and GM-CSF signaling and Vesicle-mediated transport. GO annotations related to this gene include antigen binding. An important paralog of this gene is IGLC3.

Research Area

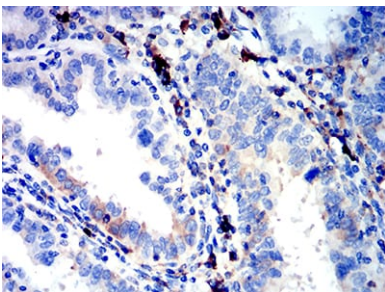
Image Data



Black line: Control Antigen (100 ng);Purple line: Antigen (10ng); Blue line: Antigen (50 ng); Red line:Antigen (100 ng)



Immunohistochemical analysis of paraffin-embedded human colon tissues using IGLC2 mouse mAb with DAB staining.



Immunohistochemical analysis of paraffin-embedded human endometrial cancer tissues using IGLC2 mouse mAb with DAB staining.