

Product Name: AMY1A Mouse Monoclonal Antibody**Catalog #: AMM81837**

For research use only.

Summary

Description	Mouse monoclonal Antibody
Host	Mouse
Application	ELISA,FC
Reactivity	Human
Conjugation	Unconjugated
Modification	Unmodified
Isotype	Mouse IgG1
Clonality	Monoclonal
Form	Liquid
Concentration	1mg/ml
Storage	Aliquot and store at -20°C (valid for 12 months). Avoid freeze/thaw cycles.
Shipping	Ice bags
Buffer	Purified antibody in PBS with 0.05% sodium azide
Purification	Affinity Purification

Application

Dilution Ratio	ELISA 1:5000-1:20000,FC 1:200-1:400
Molecular Weight	57.8kDa

Antigen Information

Gene Name	AMY1A
Alternative Names	AMY1
Gene ID	276.0
SwissProt ID	P0DTE7/P0DUB6/P0DTE8
Immunogen	Purified recombinant fragment of human AMY1A (AA: 172-284) expressed in E. Coli.

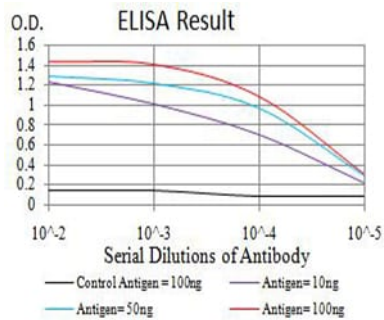
Background

Amylases are secreted proteins that hydrolyze 1,4-alpha-glucoside bonds in oligosaccharides and polysaccharides, and thus catalyze the first step in digestion of dietary starch and glycogen. The human genome has a cluster of several amylase genes that are expressed at high levels in either salivary gland or pancreas. This gene encodes an amylase isoenzyme produced by the

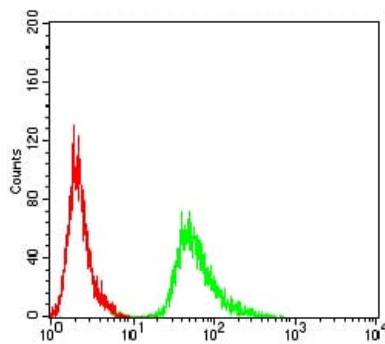
salivary gland. Alternative splicing results in multiple transcript variants encoding the same protein.

Research Area

Image Data



Black line: Control Antigen (100 ng);Purple line: Antigen (10ng); Blue line: Antigen (50 ng); Red line:Antigen (100 ng)



Flow cytometric analysis of MCF-7 cells using AMY1A mouse mAb (green) and negative control (red).