
Product Name: ROP1 Mouse Monoclonal Antibody**Catalog #: AMM81836**

For research use only.

Summary

Description	Mouse monoclonal Antibody
Host	Mouse
Application	IHC,ICC,ELISA
Reactivity	Human
Conjugation	Unconjugated
Modification	Unmodified
Isotype	Mouse IgG2a
Clonality	Monoclonal
Form	Liquid
Concentration	1mg/ml
Storage	Aliquot and store at -20°C (valid for 12 months). Avoid freeze/thaw cycles.
Shipping	Ice bags
Buffer	Purified antibody in PBS with 0.05% sodium azide
Purification	Affinity Purification

Application

Dilution Ratio	IHC 1:200-1:1000,ICC 1:200-1:1000,ELISA 1:5000-1:20000
Molecular Weight	42.6kDa

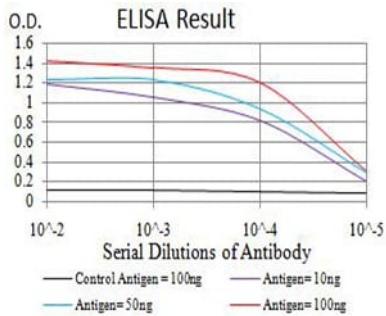
Antigen Information

Gene Name	ROP1
Alternative Names	ROP1
Gene ID	M71274.1
SwissProt ID	
Immunogen	Purified recombinant fragment of Toxoplasma gondii rhoptry protein ROP1 (AA: 42-183) expressed in E. Coli.

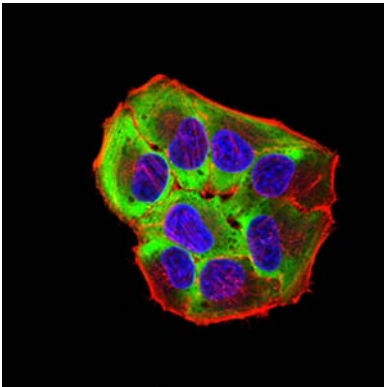
Background

Research Area

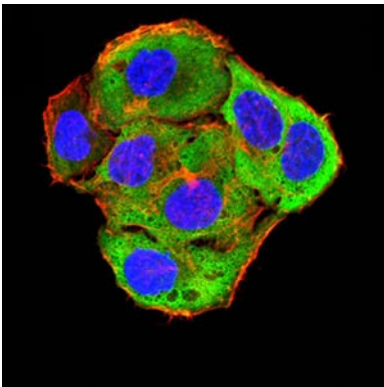
Image Data



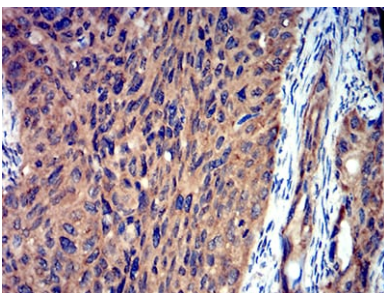
Black line: Control Antigen (100 ng); Purple line: Antigen (10ng); Blue line: Antigen (50 ng); Red line: Antigen (100 ng)



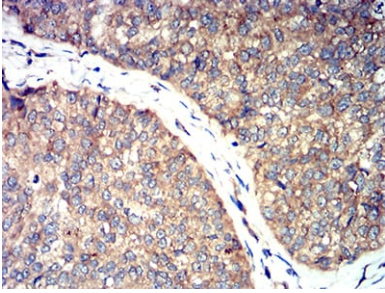
Immunofluorescence analysis of HeLa cells using ROP1 mouse mAb (green). Blue: DRAQ5 fluorescent DNA dye. Red: Actin filaments have been labeled with Alexa Fluor- 555 phalloidin.



Immunofluorescence analysis of SMMC-7721 cells using ROP1 mouse mAb (green). Blue: DRAQ5 fluorescent DNA dye. Red: Actin filaments have been labeled with Alexa Fluor- 555 phalloidin.



Immunohistochemical analysis of paraffin-embedded human ROP1 tissues using cervical cancer mouse mAb with DAB staining.



Immunohistochemical analysis of paraffin-embedded human ROP1 tissues using bladder cancer mouse mAb with DAB staining.