

Product Name: ASH2L Mouse Monoclonal Antibody**Catalog #: AMM81825**

For research use only.

Summary

Description	Mouse monoclonal Antibody
Host	Mouse
Application	IHC,ELISA
Reactivity	Human
Conjugation	Unconjugated
Modification	Unmodified
Isotype	Mouse IgG1
Clonality	Monoclonal
Form	Liquid
Concentration	1mg/ml
Storage	Aliquot and store at -20°C (valid for 12 months). Avoid freeze/thaw cycles.
Shipping	Ice bags
Buffer	Purified antibody in PBS with 0.05% sodium azide
Purification	Affinity Purification

Application

Dilution Ratio	IHC 1:200-1:1000,ELISA 1:5000-1:20000
Molecular Weight	68.7kDa

Antigen Information

Gene Name	ASH2L
Alternative Names	ASH2; Bre2; ASH2L1; ASH2L2
Gene ID	9070.0
SwissProt ID	Q9UBL3
Immunogen	Purified recombinant fragment of human ASH2L (AA: 493-628) expressed in E. Coli.

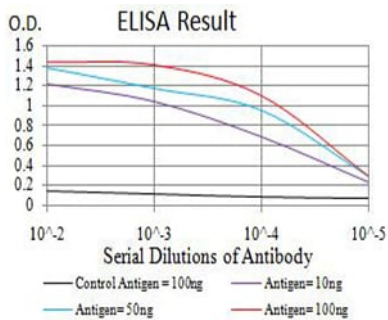
Background

ASH2L (ASH2 Like Histone Lysine Methyltransferase Complex Subunit) is a Protein Coding gene. Diseases associated with ASH2L include Kabuki Syndrome 1. Among its related pathways are Chromatin organization and Signaling by GPCR. GO annotations related to this gene include transcription regulatory region DNA binding and histone methyltransferase activity

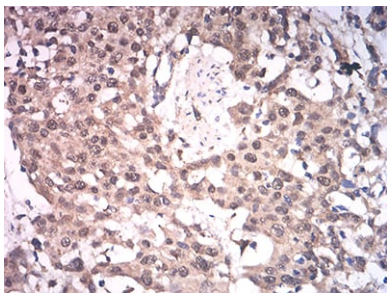
(H3-K4 specific).

Research Area

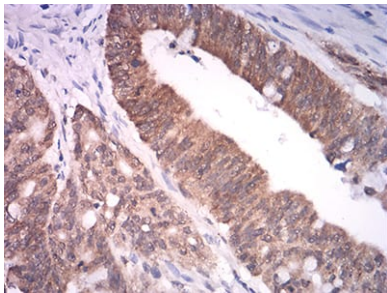
Image Data



Black line: Control Antigen (100 ng);Purple line: Antigen (10ng); Blue line: Antigen (50 ng); Red line:Antigen (100 ng)



Immunohistochemical analysis of paraffin-embedded human esophageal cancer tissues using ASH2L mouse mAb with DAB staining.



Immunohistochemical analysis of paraffin-embedded human rectum cancer tissues using ASH2L mouse mAb with DAB staining.