
Product Name: ATF4 Mouse Monoclonal Antibody**Catalog #: AMM81816**

For research use only.

Summary

Description	Mouse monoclonal Antibody
Host	Mouse
Application	WB,IHC,ELISA
Reactivity	Human
Conjugation	Unconjugated
Modification	Unmodified
Isotype	Mouse IgG1
Clonality	Monoclonal
Form	Liquid
Concentration	1mg/ml
Storage	Aliquot and store at -20°C (valid for 12 months). Avoid freeze/thaw cycles.
Shipping	Ice bags
Buffer	Purified antibody in PBS with 0.05% sodium azide
Purification	Affinity Purification

Application

Dilution Ratio	WB 1:500-1:2000,IHC 1:200-1:1000,ELISA 1:5000-1:20000
Molecular Weight	38.6kDa

Antigen Information

Gene Name	ATF4
Alternative Names	CREB2; TXREB; CREB-2; TAXREB67
Gene ID	468.0
SwissProt ID	P18848
Immunogen	Purified recombinant fragment of human ATF4 (AA: 212-351) expressed in E. Coli.

Background

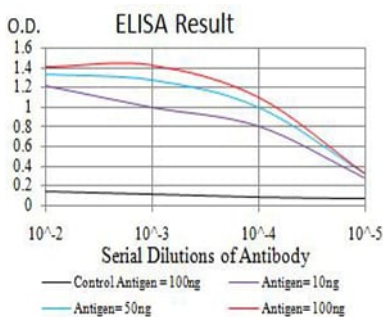
This gene encodes a transcription factor that was originally identified as a widely expressed mammalian DNA binding protein that could bind a tax-responsive enhancer element in the LTR of HTLV-1. The encoded protein was also isolated and characterized as the cAMP-response element binding protein 2 (CREB-2). The protein encoded by this gene belongs to a family

of DNA-binding proteins that includes the AP-1 family of transcription factors, cAMP-response element binding proteins (CREBs) and CREB-like proteins. These transcription factors share a leucine zipper region that is involved in protein-protein interactions, located C-terminal to a stretch of basic amino acids that functions as a DNA binding domain. Two alternative transcripts encoding the same protein have been described. Two pseudogenes are located on the X chromosome at q28 in a region containing a large inverted duplication.

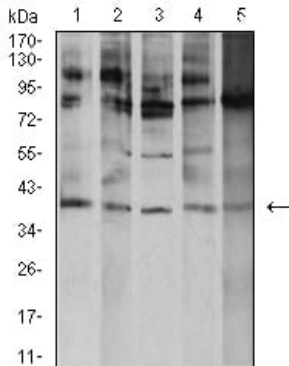
Research Area

PI3K-Akt signaling pathway, MAPK signaling pathway

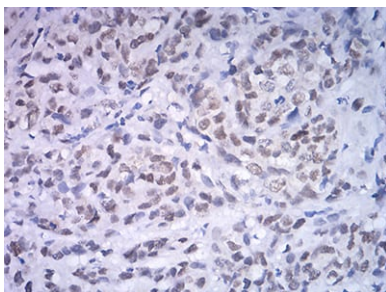
Image Data



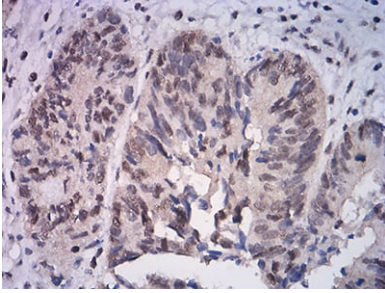
Black line: Control Antigen (100 ng); Purple line: Antigen (10ng); Blue line: Antigen (50 ng); Red line: Antigen (100 ng)



Western blot analysis using ATF4 mouse mAb against K562 (1), A431 (2), HeLa (3), HEK293 (4), and Ramos (5) cell lysate.



Immunohistochemical analysis of paraffin-embedded human breast cancer tissues using ATF4 mouse mAb with DAB staining.



Immunohistochemical analysis of paraffin-embedded human rectum cancer tissues using ATF4 mouse mAb with DAB staining.