

**Product Name: ADRB2 Mouse Monoclonal Antibody****Catalog #: AMM81790**

For research use only.

**Summary**

<b>Description</b>	Mouse monoclonal Antibody
<b>Host</b>	Mouse
<b>Application</b>	WB,ELISA,FC
<b>Reactivity</b>	Human,Rat
<b>Conjugation</b>	Unconjugated
<b>Modification</b>	Unmodified
<b>Isotype</b>	Mouse IgG1
<b>Clonality</b>	Monoclonal
<b>Form</b>	Liquid
<b>Concentration</b>	1mg/ml
<b>Storage</b>	Aliquot and store at -20°C (valid for 12 months). Avoid freeze/thaw cycles.
<b>Shipping</b>	Ice bags
<b>Buffer</b>	Purified antibody in PBS with 0.05% sodium azide
<b>Purification</b>	Affinity Purification

**Application**

<b>Dilution Ratio</b>	WB 1:500-1:2000,ELISA 1:5000-1:20000,FC 1:200-1:400
<b>Molecular Weight</b>	46.5kDa

**Antigen Information**

<b>Gene Name</b>	ADRB2
<b>Alternative Names</b>	BAR; B2AR; ADRBR; ADRB2R; BETA2AR
<b>Gene ID</b>	154.0
<b>SwissProt ID</b>	P07550
<b>Immunogen</b>	Purified recombinant fragment of human ADRB2 (AA: 302-413) expressed in E. Coli.

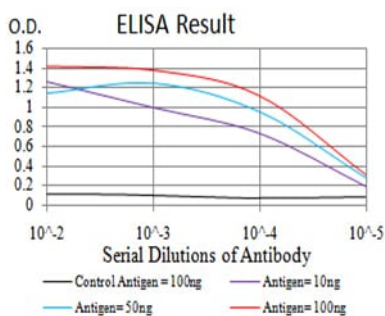
**Background**

This gene encodes beta-2-adrenergic receptor which is a member of the G protein-coupled receptor superfamily. This receptor is directly associated with one of its ultimate effectors, the class C L-type calcium channel Ca(V)1.2. This receptor-channel complex also contains a G protein, an adenylyl cyclase, cAMP-dependent kinase, and the counterbalancing phosphatase, PP2A.

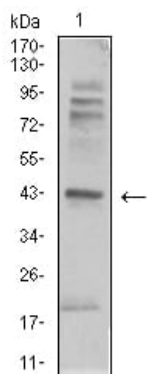
The assembly of the signaling complex provides a mechanism that ensures specific and rapid signaling by this G protein-coupled receptor. This gene is intronless. Different polymorphic forms, point mutations, and/or downregulation of this gene are associated with nocturnal asthma, obesity and type 2 diabetes.

## Research Area

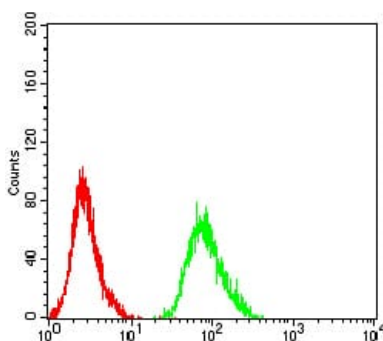
## Image Data



Black line: Control Antigen (100 ng);Purple line: Antigen (10ng); Blue line: Antigen (50 ng); Red line:Antigen (100 ng)



Western blot analysis using ADRB2 mouse mAb against C6 (1) cell lysate.



Flow cytometric analysis of MCF-7 cells using ADRB2 mouse mAb (green) and negative control (red).