
Product Name: MMP2 Mouse Monoclonal Antibody**Catalog #: AMM81783**

For research use only.

Summary

Description	Mouse monoclonal Antibody
Host	Mouse
Application	WB,ELISA,FC
Reactivity	Human,Mouse
Conjugation	Unconjugated
Modification	Unmodified
Isotype	Mouse IgG1
Clonality	Monoclonal
Form	Liquid
Concentration	1mg/ml
Storage	Aliquot and store at -20°C (valid for 12 months). Avoid freeze/thaw cycles.
Shipping	Ice bags
Buffer	Purified antibody in PBS with 0.05% sodium azide
Purification	Affinity Purification

Application

Dilution Ratio	WB 1:500-1:2000,ELISA 1:5000-1:20000,FC 1:200-1:400
Molecular Weight	73.8kDa

Antigen Information

Gene Name	MMP2
Alternative Names	CLG4; MONA; CLG4A; MMP-2; TBE-1; MMP-II
Gene ID	4313.0
SwissProt ID	P08253
Immunogen	Purified recombinant fragment of human MMP2 (AA: 9-140) expressed in E. Coli.

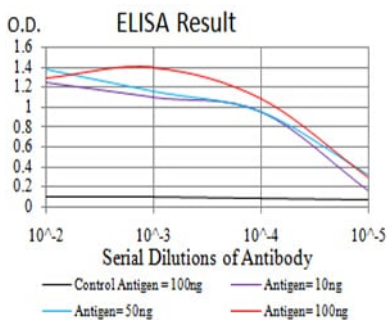
Background

This gene is a member of the matrix metalloproteinase (MMP) gene family, that are zinc-dependent enzymes capable of cleaving components of the extracellular matrix and molecules involved in signal transduction. The protein encoded by this gene is a gelatinase A, type IV collagenase, that contains three fibronectin type II repeats in its catalytic site that allow binding

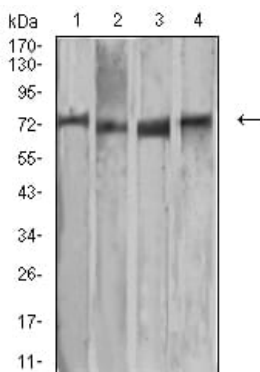
of denatured type IV and V collagen and elastin. Unlike most MMP family members, activation of this protein can occur on the cell membrane. This enzyme can be activated extracellularly by proteases, or, intracellularly by its S-glutathiolation with no requirement for proteolytical removal of the pro-domain. This protein is thought to be involved in multiple pathways including roles in the nervous system, endometrial menstrual breakdown, regulation of vascularization, and metastasis. Mutations in this gene have been associated with Winchester syndrome and Nodulosis-Arthropathy-Osteolysis (NAO) syndrome. Alternative splicing results in multiple transcript variants encoding different isoforms.

Research Area

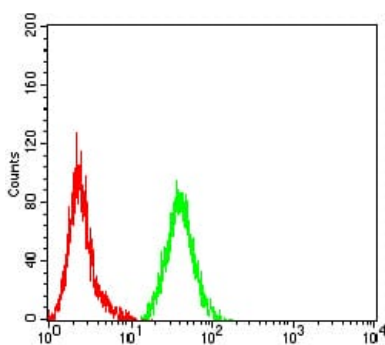
Image Data



Black line: Control Antigen (100 ng); Purple line: Antigen (10ng); Blue line: Antigen (50 ng); Red line: Antigen (100 ng)



Western blot analysis using MMP2 mouse mAb against MCF-7 (1), Raw264.7 (2), HUVEC (3), and T47D (4) cell lysate.



Flow cytometric analysis of HeLa cells using MMP2 mouse mAb (green) and negative control (red).