

---

**Product Name: CPV-NS1 Mouse Monoclonal Antibody****Catalog #: AMM81750**

For research use only.

**Summary**

<b>Description</b>	Mouse monoclonal Antibody
<b>Host</b>	Mouse
<b>Application</b>	WB,IHC,ICC,ELISA,FC
<b>Reactivity</b>	Human, Mouse, Monkey
<b>Conjugation</b>	Unconjugated
<b>Modification</b>	Unmodified
<b>Isotype</b>	Mouse IgG1
<b>Clonality</b>	Monoclonal
<b>Form</b>	Liquid
<b>Concentration</b>	1mg/ml
<b>Storage</b>	Aliquot and store at -20°C (valid for 12 months). Avoid freeze/thaw cycles.
<b>Shipping</b>	Ice bags
<b>Buffer</b>	Purified antibody in PBS with 0.05% sodium azide
<b>Purification</b>	Affinity Purification

**Application**

<b>Dilution Ratio</b>	WB 1:500-1:2000,IHC 1:200-1:1000,ICC 1:200-1:1000,ELISA 1:5000-1:20000,FC 1:200-1:400
<b>Molecular Weight</b>	60kDa

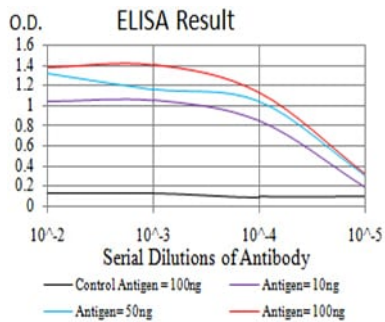
**Antigen Information**

<b>Gene Name</b>	CPV-NS1
<b>Alternative Names</b>	Canine parvovirus nonstructural protein 1
<b>Gene ID</b>	EF011664.1
<b>SwissProt ID</b>	
<b>Immunogen</b>	Purified recombinant fragment of Canine Parvovirus CPV-NS1 (AA: 544-668) expressed in E. Coli.

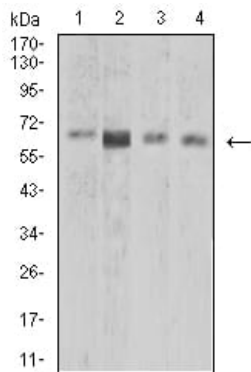
**Background**

## Research Area

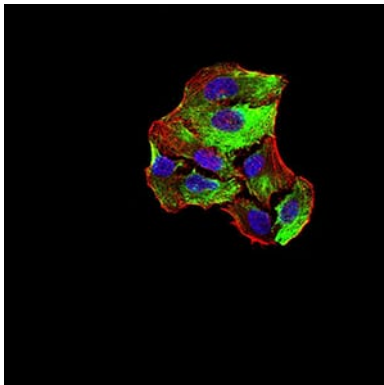
### Image Data



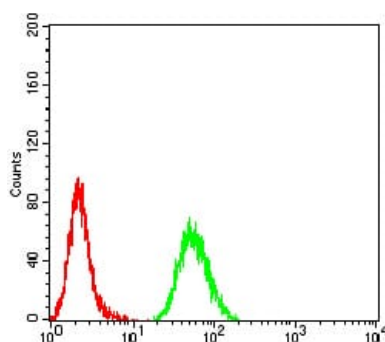
Black line: Control Antigen (100 ng); Purple line: Antigen (10ng); Blue line: Antigen (50 ng); Red line: Antigen (100 ng)



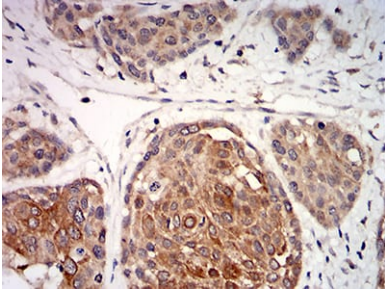
Western blot analysis using CPV-NS1 mouse mAb against K562 (1), BCBL-1 (2), Raw264.7 (3), and COS7 (4) cell lysate.



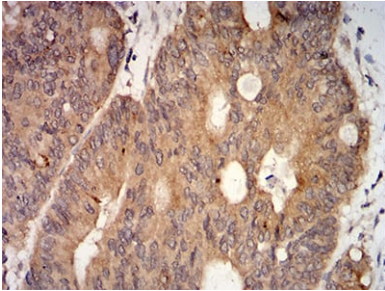
Immunofluorescence analysis of HeLa cells using CPV-NS1 mouse mAb (green). Blue: DRAQ5 fluorescent DNA dye. Red: Actin filaments have been labeled with Alexa Fluor- 555 phalloidin.



Flow cytometric analysis of HeLa cells using CPV-NS1 mouse mAb (green) and negative control (red).



Immunohistochemical analysis of paraffin-embedded human ovarian cancer tissues using CPV-NS1 mouse mAb with DAB staining.



Immunohistochemical analysis of paraffin-embedded human rectum cancer tissues using CPV-NS1 mouse mAb with DAB staining.