

**Product Name: CDCP1 Mouse Monoclonal Antibody****Catalog #: AMM81740**

For research use only.

**Summary**

<b>Description</b>	Mouse monoclonal Antibody
<b>Host</b>	Mouse
<b>Application</b>	IHC,ELISA
<b>Reactivity</b>	Human
<b>Conjugation</b>	Unconjugated
<b>Modification</b>	Unmodified
<b>Isotype</b>	Mouse IgG1
<b>Clonality</b>	Monoclonal
<b>Form</b>	Liquid
<b>Concentration</b>	1mg/ml
<b>Storage</b>	Aliquot and store at -20°C (valid for 12 months). Avoid freeze/thaw cycles.
<b>Shipping</b>	Ice bags
<b>Buffer</b>	Purified antibody in PBS with 0.05% sodium azide
<b>Purification</b>	Affinity Purification

**Application**

<b>Dilution Ratio</b>	IHC 1:200-1:1000,ELISA 1:5000-1:20000
<b>Molecular Weight</b>	93kDa

**Antigen Information**

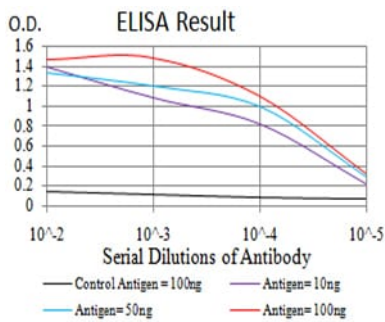
<b>Gene Name</b>	CDCP1
<b>Alternative Names</b>	CD318; TRASK; SIMA135
<b>Gene ID</b>	64866.0
<b>SwissProt ID</b>	Q9H5V8
<b>Immunogen</b>	Purified recombinant fragment of human CDCP1 (AA: 692-836) expressed in E. Coli.

**Background**

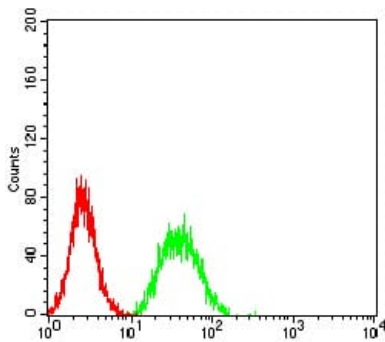
This gene encodes a transmembrane protein which contains three extracellular CUB domains and acts as a substrate for Src family kinases. The protein plays a role in the tyrosine phosphorylation-dependent regulation of cellular events that are involved in tumor invasion and metastasis. Alternative splicing results in multiple transcript variants of this gene.

## Research Area

## Image Data



Black line: Control Antigen (100 ng);Purple line: Antigen (10ng); Blue line: Antigen (50 ng); Red line:Antigen (100 ng)



Immunohistochemical analysis of paraffin-embedded human Hela tissues using CDCP1 mouse mAb with DAB staining.