
Product Name: KLF2 Mouse Monoclonal Antibody**Catalog #: AMM81719**

For research use only.

Summary

Description	Mouse monoclonal Antibody
Host	Mouse
Application	WB,ELISA
Reactivity	Human,Mouse
Conjugation	Unconjugated
Modification	Unmodified
Isotype	Mouse IgG1
Clonality	Monoclonal
Form	Liquid
Concentration	1mg/ml
Storage	Aliquot and store at -20°C (valid for 12 months). Avoid freeze/thaw cycles.
Shipping	Ice bags
Buffer	Purified antibody in PBS with 0.05% sodium azide
Purification	Affinity Purification

Application

Dilution Ratio	WB 1:500-1:2000,ELISA 1:5000-1:20000
Molecular Weight	37.4kDa

Antigen Information

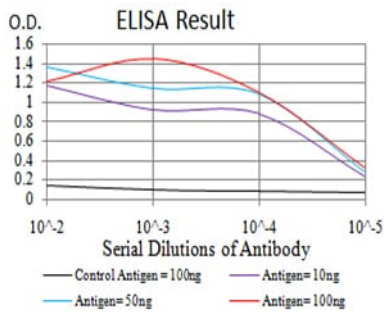
Gene Name	KLF2
Alternative Names	LKLF
Gene ID	10365.0
SwissProt ID	Q9Y5W3
Immunogen	Purified recombinant fragment of human KLF2 (AA: 251-355) expressed in E. Coli.

Background

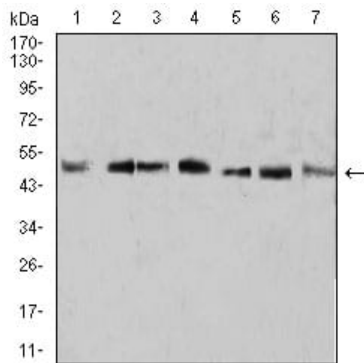
Kruppel-like factors (KLFs) are a family of broadly expressed zinc finger transcription factors. KLF2 regulates T-cell trafficking by promoting expression of the lipid-binding receptor S1P1 (S1PR1; MIM 601974) and the selectin CD62L (SELL; MIM 153240) (summary by Weinreich et al., 2009 [PubMed 19592277]).

Research Area

Image Data



Black line: Control Antigen (100 ng);Purple line: Antigen (10ng); Blue line: Antigen (50 ng); Red line:Antigen (100 ng)



Western blot analysis using KLF2 mouse mAb against A431 (1), U937 (2), NIH/3T3 (3), Raw264.7 (4), SPC-A-1 (5), SK-MES-1 (6), and MOLT4 (7) cell lysate.