

Summary

Production Name	C3C Mouse Monoclonal Antibody
Description	Mouse Monoclonal Antibody
Host	Mouse
Application	WB,IHC,ICC,FC,ELISA
Reactivity	Human

Performance

Conjugation	Unconjugated
Modification	Unmodified
Isotype	Mouse IgG1
Clonality	Monoclonal
Form	Liquid
Storage	Store at 4°C short term. Aliquot and store at -20°C long term. Avoid freeze/thaw cycles.
Buffer	Purified antibody in PBS with 0.05% sodium azide
Purification	Affinity Purification

Immunogen

Gene Name	C3C
Alternative Names	ASP; C3a; C3b; AHUS5; ARMD9; CPAMD1; HEL-S-62p
Gene ID	718.0
SwissProt ID	P01024.Purified recombinant fragment of human C3C (AA: 1521-1649) expressed in E. Coli.

Application

Dilution Ratio	WB:1:500-1:2000,IHC:1:200-1:1000,ICC:1:200-1:1000,FC:1:200-1:400,ELISA:1:10000
Molecular Weight	187.1kDa

Background

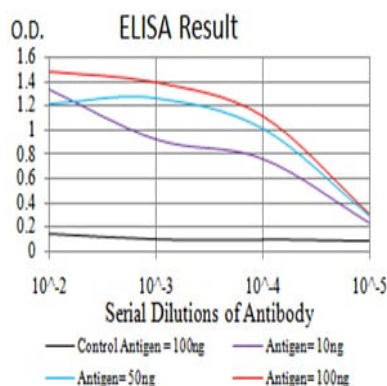
Product Name: C3C Mouse Monoclonal Antibody
Catalog #: AMM81712



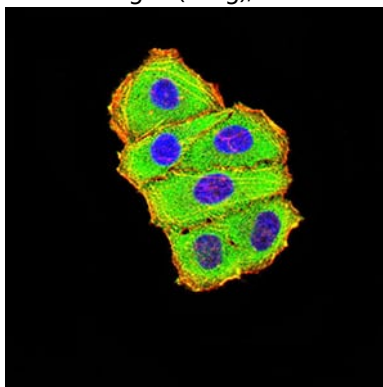
Complement component C3 plays a central role in the activation of complement system. Its activation is required for both classical and alternative complement activation pathways. The encoded preproprotein is proteolytically processed to generate alpha and beta subunits that form the mature protein, which is then further processed to generate numerous peptide products. The C3a peptide, also known as the C3a anaphylatoxin, modulates inflammation and possesses antimicrobial activity. Mutations in this gene are associated with atypical hemolytic uremic syndrome and age-related macular degeneration in human patients.

Research Area

Image Data

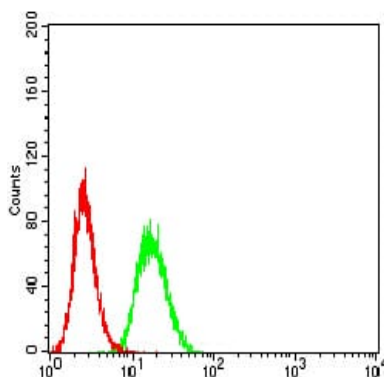


Black line: Control Antigen (100 ng);Purple line: Antigen (10ng); Blue line: Antigen (50 ng); Red line:Antigen (100 ng)

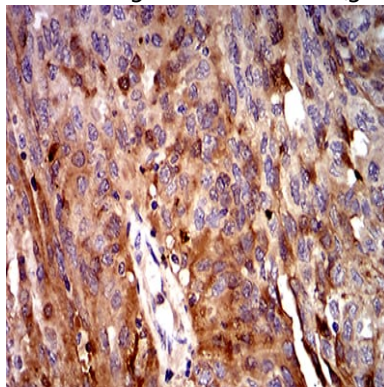


Immunofluorescence analysis of HeLa cells using C3C mouse mAb (green). Blue: DRAQ5 fluorescent DNA dye. Red: Actin filaments have been labeled with Alexa Fluor- 555 phalloidin. Secondary antibody from Fisher (Cat#: 35503)

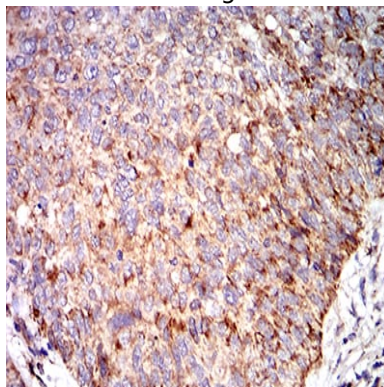
Product Name: C3C Mouse Monoclonal Antibody
Catalog #: AMM81712



Flow cytometric analysis of Hela cells using C3C mouse mAb (green) and negative control (red).



Immunohistochemical analysis of paraffin-embedded human ovarian cancer tissues using C3C mouse mAb with DAB staining.



Immunohistochemical analysis of paraffin-embedded human bladder cancer tissues using C3C mouse mAb with DAB staining.

Note

For research use only.