
Product Name: TTF1 Mouse Monoclonal Antibody**Catalog #: AMM81693**

For research use only.

Summary

Description	Mouse monoclonal Antibody
Host	Mouse
Application	IHC,ICC,ELISA,FC
Reactivity	Human
Conjugation	Unconjugated
Modification	Unmodified
Isotype	Mouse IgG1
Clonality	Monoclonal
Form	Liquid
Concentration	1mg/ml
Storage	Aliquot and store at -20°C (valid for 12 months). Avoid freeze/thaw cycles.
Shipping	Ice bags
Buffer	Purified antibody in PBS with 0.05% sodium azide
Purification	Affinity Purification

Application

Dilution Ratio	IHC 1:200-1:1000,ICC 1:200-1:1000,ELISA 1:5000-1:20000,FC 1:200-1:400
Molecular Weight	103kDa

Antigen Information

Gene Name	TTF1
Alternative Names	TTF-1; TTF-I
Gene ID	7270.0
SwissProt ID	Q15361
Immunogen	Purified recombinant fragment of human TTF1 (AA: 1-150) expressed in E. Coli.

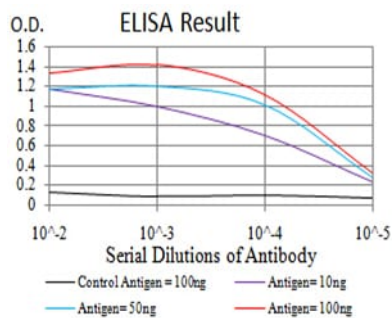
Background

This gene encodes a transcription termination factor that is localized to the nucleolus and plays a critical role in ribosomal gene transcription. The encoded protein mediates the termination of RNA polymerase I transcription by binding to Sal box terminator elements downstream of pre-rRNA coding regions. Alternatively spliced transcript variants encoding multiple

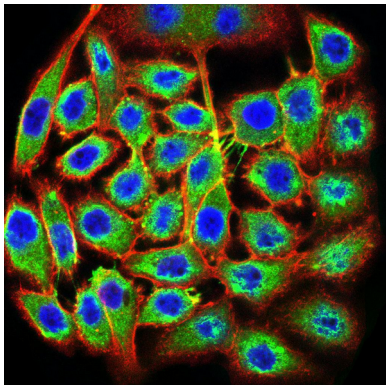
isoforms have been observed for this gene. This gene shares the symbol/alias 'TFF1' with another gene, NK2 homeobox 1, also known as thyroid transcription factor 1, which plays a role in the regulation of thyroid-specific gene expression.

Research Area

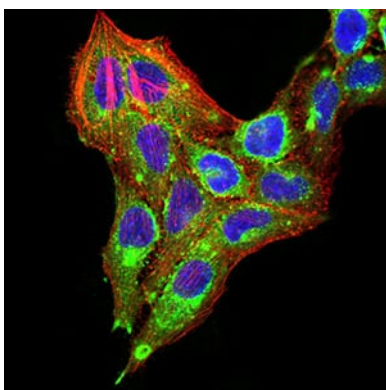
Image Data



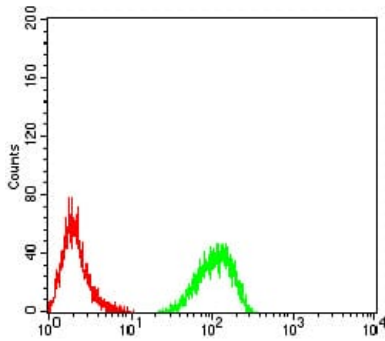
Black line: Control Antigen (100 ng);Purple line: Antigen (10ng); Blue line: Antigen (50 ng); Red line:Antigen (100 ng)



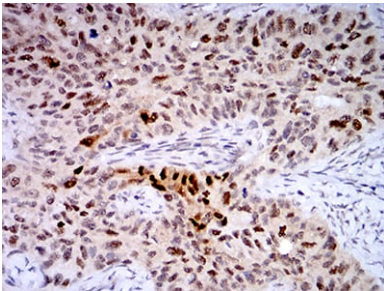
Immunofluorescence analysis of MCF-7 cells using TTF1 mouse mAb (green). Blue: DRAQ5 fluorescent DNA dye. Red: Actin filaments have been labeled with Alexa Fluor- 555 phalloidin.



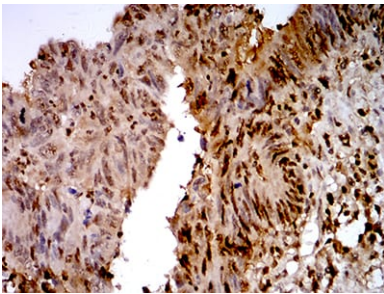
Immunofluorescence analysis of SK-OV-3 cells using TTF1 mouse mAb (green). Blue: DRAQ5 fluorescent DNA dye. Red: Actin filaments have been labeled with Alexa Fluor- 555 phalloidin.



Flow cytometric analysis of HeLa cells using TTF1 mouse mAb (green) and negative control (red).



Immunohistochemical analysis of paraffin-embedded human cervical cancer tissues using TTF1 mouse mAb with DAB staining.



Immunohistochemical analysis of paraffin-embedded human rectum cancer tissues using TTF1 mouse mAb with DAB staining.