

**Product Name: CD2 Mouse Monoclonal Antibody**  
**Catalog #: AMM81687**



## Summary

<b>Production Name</b>	CD2 Mouse Monoclonal Antibody
<b>Description</b>	Mouse Monoclonal Antibody
<b>Host</b>	Mouse
<b>Application</b>	WB,IHC,FC,ELISA
<b>Reactivity</b>	Mouse

## Performance

<b>Conjugation</b>	Unconjugated
<b>Modification</b>	Unmodified
<b>Isotype</b>	Mouse IgG1
<b>Clonality</b>	Monoclonal
<b>Form</b>	Liquid
<b>Storage</b>	Store at 4°C short term. Aliquot and store at -20°C long term. Avoid freeze/thaw cycles.
<b>Buffer</b>	Purified antibody in PBS with 0.05% sodium azide
<b>Purification</b>	Affinity Purification

## Immunogen

<b>Gene Name</b>	CD2
<b>Alternative Names</b>	T11; SRBC; LFA-2
<b>Gene ID</b>	914.0
<b>SwissProt ID</b>	P06729.Purified recombinant fragment of human CD2 (AA: 25-140) expressed in E. Coli.

## Application

<b>Dilution Ratio</b>	WB:1:500-1:2000,IHC:1:200-1:1000,FC:1:200-1:400,ELISA:1:10000
<b>Molecular Weight</b>	39.4kDa

## Background

CD2 is a surface antigen of the human T-lymphocyte lineage that is expressed on all peripheral blood T cells (summarized

**Product Name: CD2 Mouse Monoclonal Antibody**  
**Catalog #: AMM81687**

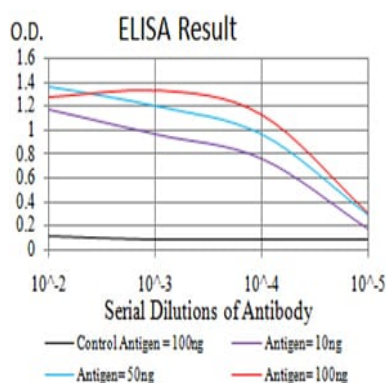


by Sewell et al., 1986 [PubMed 3490670]). It is one of the earliest T-cell markers, being present on more than 95% of thymocytes; it is also found on some natural killer cells but not on B lymphocytes. Monoclonal antibodies directed against CD2 inhibit the formation of rosettes with sheep erythrocytes, indicating that CD2 is the erythrocyte receptor or is closely associated with it.

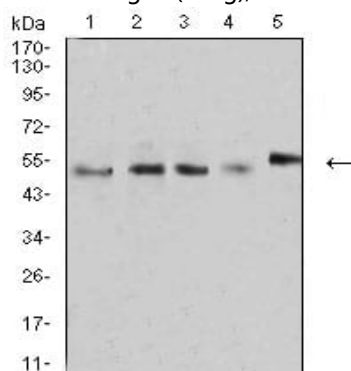
## Research Area

TGF-beta signaling pathway

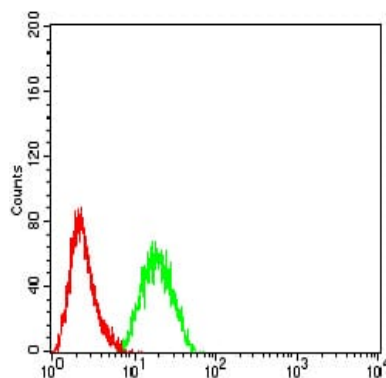
## Image Data



Black line: Control Antigen (100 ng); Purple line: Antigen (10ng); Blue line: Antigen (50 ng); Red line: Antigen (100 ng)



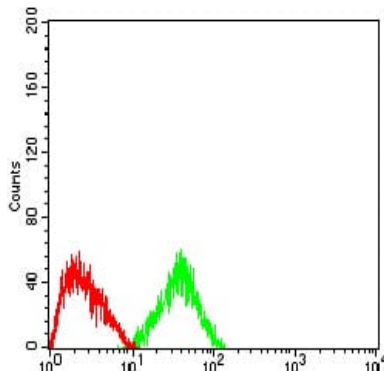
Western blot analysis using CD2 mouse mAb against MOLT4 (1), MCF-7 (2), L1210 (3), U937 (4), and NIH3T3 (5) cell lysate.



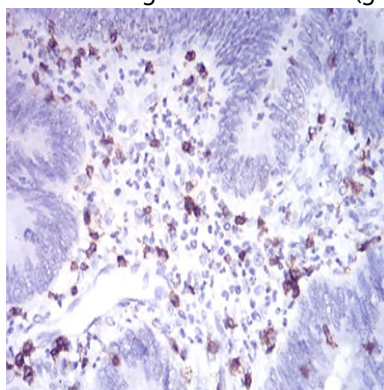
**Product Name: CD2 Mouse Monoclonal Antibody**  
**Catalog #: AMM81687**



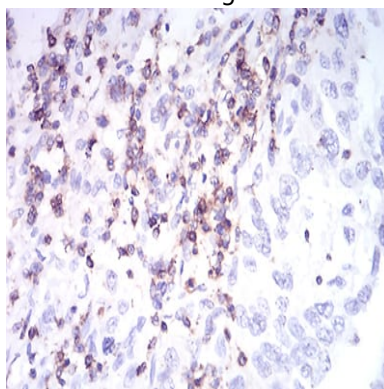
Flow cytometric analysis of Hela cells using CD2 mouse mAb (green) and negative control (red).



Flow cytometric analysis of HepG2 cells using CD2 mouse mAb (green) and negative control (red).



Immunohistochemical analysis of paraffin-embedded human rectum cancer tissues using CD2 mouse mAb with DAB staining.



Immunohistochemical analysis of paraffin-embedded human endometrial cancer tissues using CD2 mouse mAb with DAB staining.

## Note

For research use only.