
Product Name: ALDH6A1 Mouse Monoclonal Antibody**Catalog #: AMM81641**

For research use only.

Summary

Description	Mouse monoclonal Antibody
Host	Mouse
Application	WB,IHC,ICC,ELISA,FC
Reactivity	Human
Conjugation	Unconjugated
Modification	Unmodified
Isotype	Mouse IgG1
Clonality	Monoclonal
Form	Liquid
Concentration	1mg/ml
Storage	Aliquot and store at -20°C (valid for 12 months). Avoid freeze/thaw cycles.
Shipping	Ice bags
Buffer	Purified antibody in PBS with 0.05% sodium azide
Purification	Affinity Purification

Application

Dilution Ratio	WB 1:500-1:2000,IHC 1:200-1:1000,ICC 1:200-1:1000,ELISA 1:5000-1:20000,FC 1:200-1:400
Molecular Weight	57.8kDa

Antigen Information

Gene Name	ALDH6A1
Alternative Names	MMSDH; MMSADHA
Gene ID	4329.0
SwissProt ID	Q02252
Immunogen	Purified recombinant fragment of human ALDH6A1 (AA: 1-195) expressed in E. Coli.

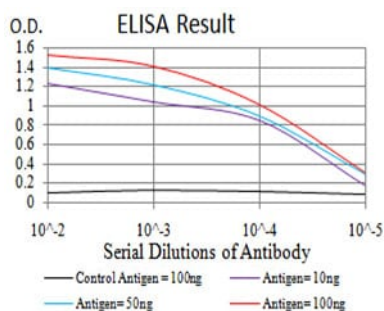
Background

This gene encodes a member of the aldehyde dehydrogenase protein family. The encoded protein is a mitochondrial methylmalonate semialdehyde dehydrogenase that plays a role in the valine and pyrimidine catabolic pathways. This protein catalyzes the irreversible oxidative decarboxylation of malonate and methylmalonate semialdehydes to acetyl- and propionyl-

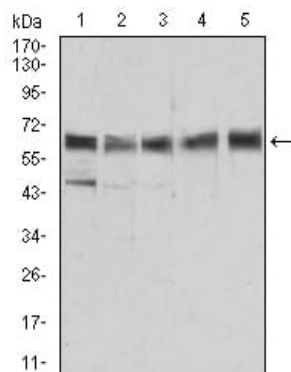
CoA. Methylmalonate semialdehyde dehydrogenase deficiency is characterized by elevated beta-alanine, 3-hydroxypropionic acid, and both isomers of 3-amino and 3-hydroxyisobutyric acids in urine organic acids. Alternate splicing results in multiple transcript variants.

Research Area

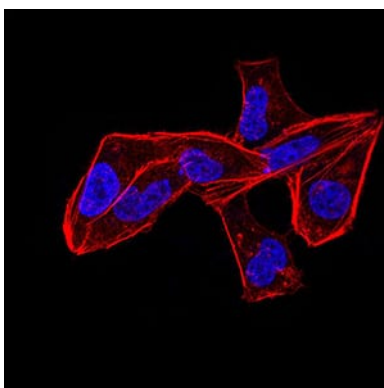
Image Data



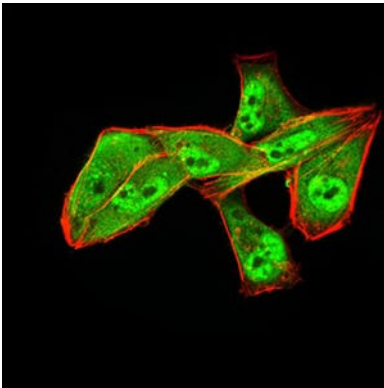
Black line: Control Antigen (100 ng);Purple line: Antigen (10ng); Blue line: Antigen (50 ng); Red line:Antigen (100 ng)



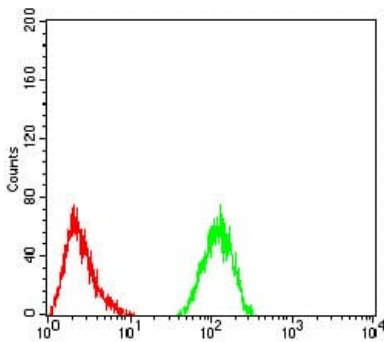
Western blot analysis using ALDH6A1 mouse mAb against Jurkat (1), HEK293 (2), HeLa (3), MCF-7 (4), and LNCap (5) cell lysate.



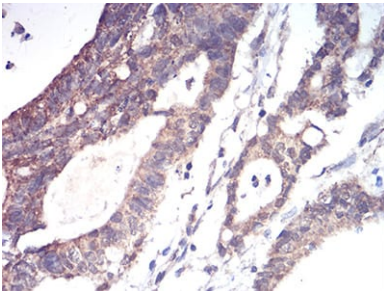
Immunofluorescence analysis of HeLa cells using ALDH6A1 mouse mAb. Blue: DRAQ5 fluorescent DNA dye. Red: Actin filaments have been labeled with Alexa Fluor- 555 phalloidin.



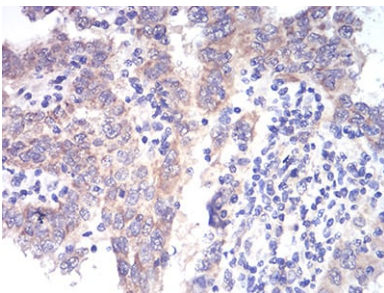
Immunofluorescence analysis of HeLa cells using ALDH6A1 mouse mAb (green). Blue: DRAQ5 fluorescent DNA dye. Red: Actin filaments have been labeled with Alexa Fluor- 555 phalloidin.



Flow cytometric analysis of HeLa cells using ALDH6A1 mouse mAb (green) and negative control (red).



Immunohistochemical analysis of paraffin-embedded human rectum cancer tissues using ALDH6A1 mouse mAb with DAB staining.



Immunohistochemical analysis of paraffin-embedded human endometrial cancer tissues using ALDH6A1 mouse mAb with DAB staining.