

**Product Name: RAD21 Mouse Monoclonal Antibody****Catalog #: AMM81636**

For research use only.

**Summary**

<b>Description</b>	Mouse monoclonal Antibody
<b>Host</b>	Mouse
<b>Application</b>	WB,IHC,ICC,ELISA,FC
<b>Reactivity</b>	Human,Rat,Monkey
<b>Conjugation</b>	Unconjugated
<b>Modification</b>	Unmodified
<b>Isotype</b>	Mouse IgG1
<b>Clonality</b>	Monoclonal
<b>Form</b>	Liquid
<b>Concentration</b>	1mg/ml
<b>Storage</b>	Aliquot and store at -20°C (valid for 12 months). Avoid freeze/thaw cycles.
<b>Shipping</b>	Ice bags
<b>Buffer</b>	Purified antibody in PBS with 0.05% sodium azide
<b>Purification</b>	Affinity Purification

**Application**

<b>Dilution Ratio</b>	WB 1:500-1:2000,IHC 1:200-1:1000,ICC 1:200-1:1000,ELISA 1:5000-1:20000,FC 1:200-1:400
<b>Molecular Weight</b>	71.7kDa

**Antigen Information**

<b>Gene Name</b>	RAD21
<b>Alternative Names</b>	HR21; MCD1; NXP1; SCC1; CDLS4; hHR21; HRAD21
<b>Gene ID</b>	5885.0
<b>SwissProt ID</b>	O60216
<b>Immunogen</b>	Purified recombinant fragment of human RAD21 (AA: 287-403) expressed in E. Coli.

**Background**

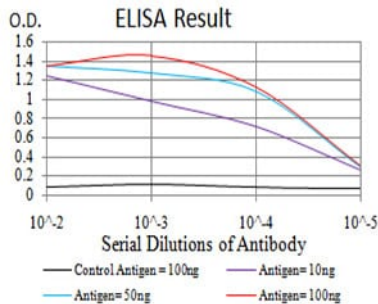
The protein encoded by this gene is highly similar to the gene product of *Schizosaccharomyces pombe* rad21, a gene involved in the repair of DNA double-strand breaks, as well as in chromatid cohesion during mitosis. This protein is a nuclear phospho-protein, which becomes hyperphosphorylated in cell cycle M phase. The highly regulated association of this protein with

mitotic chromatin specifically at the centromere region suggests its role in sister chromatid cohesion in mitotic cells.

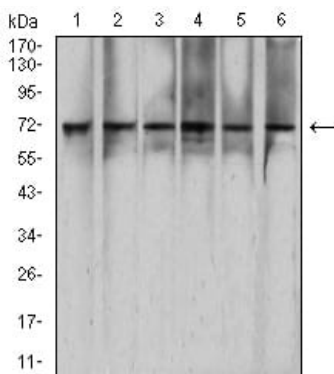
## Research Area

Apoptosis

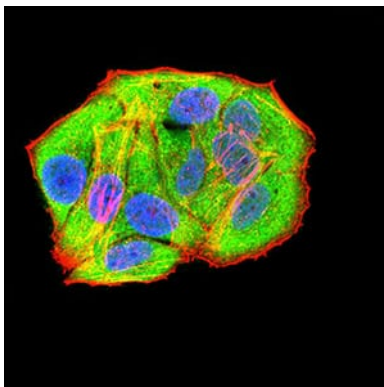
## Image Data



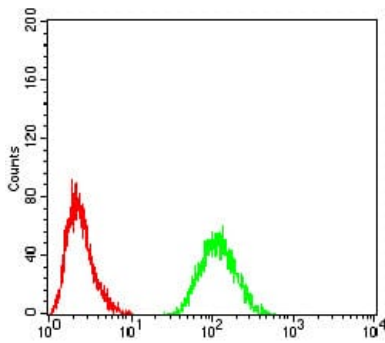
Black line: Control Antigen (100 ng);Purple line: Antigen (10ng); Blue line: Antigen (50 ng); Red line:Antigen (100 ng)



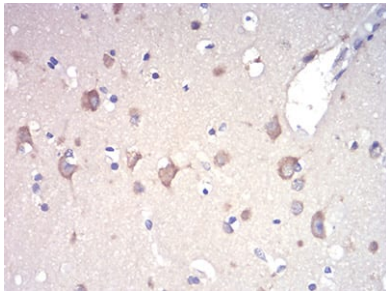
Western blot analysis using RAD21 mouse mAb against HeLa (1), HEK293 (2), K562 (3), C6 (4), \*\*\* (5), and COS7 (6) cell lysate.



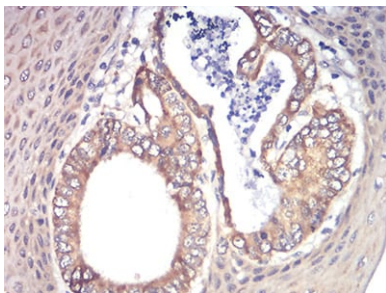
Immunofluorescence analysis of HeLa cells using RAD21 mouse mAb (green). Blue: DRAQ5 fluorescent DNA dye. Red: Actin filaments have been labeled with Alexa Fluor- 555 phalloidin.



Flow cytometric analysis of HeLa cells using RAD21 mouse mAb (green) and negative control (red).



Immunohistochemical analysis of paraffin-embedded human brain tissues using RAD21 mouse mAb with DAB staining.



Immunohistochemical analysis of paraffin-embedded human esophageal cancer tissues using RAD21 mouse mAb with DAB staining.