
Product Name: RF1 Mouse Monoclonal Antibody**Catalog #: AMM81632**

For research use only.

Summary

Description	Mouse monoclonal Antibody
Host	Mouse
Application	WB,ELISA,FC
Reactivity	Human
Conjugation	Unconjugated
Modification	Unmodified
Isotype	Mouse IgG1
Clonality	Monoclonal
Form	Liquid
Concentration	1mg/ml
Storage	Aliquot and store at -20°C (valid for 12 months). Avoid freeze/thaw cycles.
Shipping	Ice bags
Buffer	Purified antibody in PBS with 0.05% sodium azide
Purification	Affinity Purification

Application

Dilution Ratio	WB 1:500-1:2000,ELISA 1:5000-1:20000,FC 1:200-1:400
Molecular Weight	49kDa

Antigen Information

Gene Name	RF1
Alternative Names	ERF; ETF1; ERF1; TB3-1; D5S1995; SUP45L1
Gene ID	2107.0
SwissProt ID	P62495
Immunogen	Purified recombinant fragment of human RF1 (AA: 288-437) expressed in E. Coli.

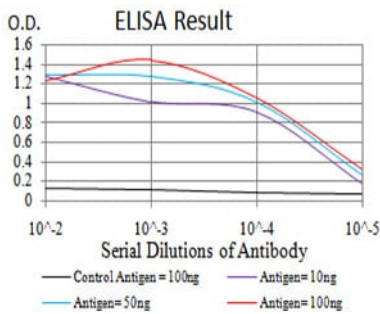
Background

This gene encodes a class-1 polypeptide chain release factor. The encoded protein plays an essential role in directing termination of mRNA translation from the termination codons UAA, UAG and UGA. This protein is a component of the SURF complex which promotes degradation of prematurely terminated mRNAs via the mechanism of nonsense-mediated mRNA

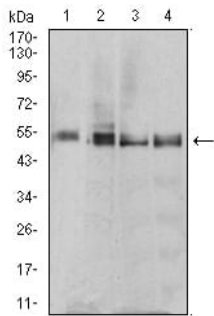
decay (NMD). Alternate splicing results in multiple transcript variants. Pseudogenes of this gene are found on chromosomes 6, 7, and X.

Research Area

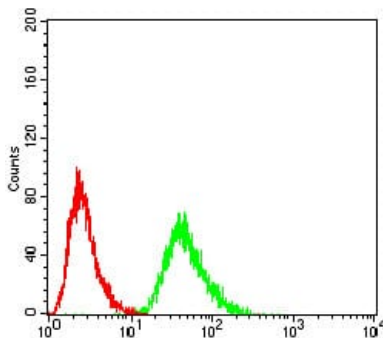
Image Data



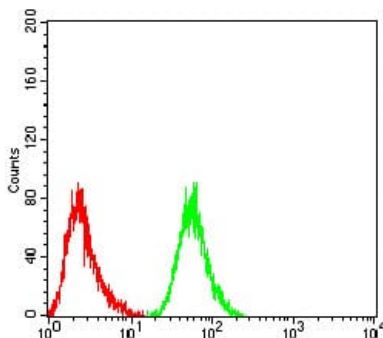
Black line: Control Antigen (100 ng);Purple line: Antigen (10ng); Blue line: Antigen (50 ng); Red line:Antigen (100 ng)



Western blot analysis using mouse mAb against MCF-7 (1), T47D (2), MOLT4 (3), and Raji (4) cell lysate.



Flow cytometric analysis of HeLa cells using RF1 mouse mAb (green) and negative control (red).



Flow cytometric analysis of HepG2 cells using RF1 mouse mAb (green) and negative control (red).

