
Product Name: GFPT1 Mouse Monoclonal Antibody**Catalog #: AMM81622**

For research use only.

Summary

Description	Mouse monoclonal Antibody
Host	Mouse
Application	WB,ICC,ELISA,FC
Reactivity	Human,Rat,Monkey
Conjugation	Unconjugated
Modification	Unmodified
Isotype	Mouse IgG1
Clonality	Monoclonal
Form	Liquid
Concentration	1mg/ml
Storage	Aliquot and store at -20°C (valid for 12 months). Avoid freeze/thaw cycles.
Shipping	Ice bags
Buffer	Purified antibody in PBS with 0.05% sodium azide
Purification	Affinity Purification

Application

Dilution Ratio	WB 1:500-1:2000,ICC 1:200-1:1000,ELISA 1:5000-1:20000,FC 1:200-1:400
Molecular Weight	78.8kDa

Antigen Information

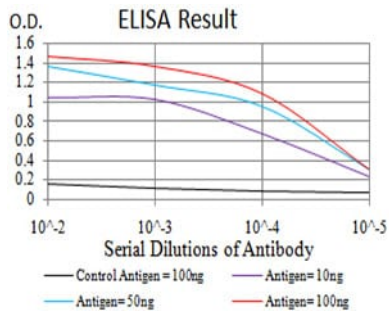
Gene Name	GFPT1
Alternative Names	GFA; GFAT; GFPT; MSLG; CMS12; GFAT1; CMSTA1; GFAT 1; GFAT1m; GFPT1L
Gene ID	2673.0
SwissProt ID	Q06210
Immunogen	Purified recombinant fragment of human GFPT1 (AA: 536-681) expressed in E. Coli.

Background

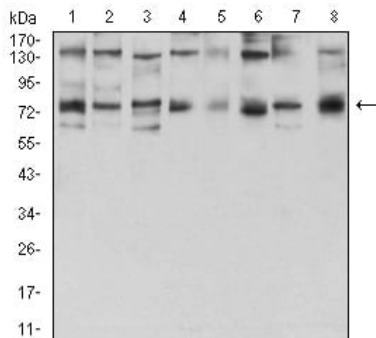
This gene encodes the first and rate-limiting enzyme of the hexosamine pathway and controls the flux of glucose into the hexosamine pathway. The product of this gene catalyzes the formation of glucosamine 6-phosphate.

Research Area

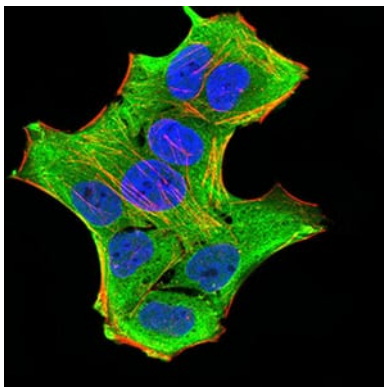
Image Data



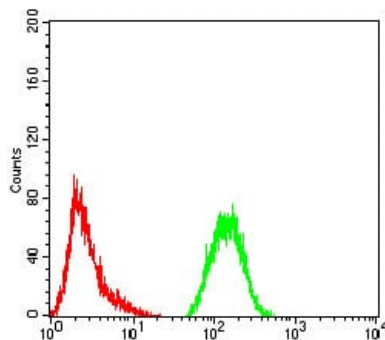
Black line: Control Antigen (100 ng); Purple line: Antigen (10ng); Blue line: Antigen (50 ng); Red line: Antigen (100 ng)



Western blot analysis using GFPT1 mouse mAb against HeLa (1), HepG2 (2), HEK293 (3), BEL-7402 (4), SMMC-7721 (5), SK-MES-1 (6), C6 (7), and COS7 (8) cell lysate.



Immunofluorescence analysis of HeLa cells using GFPT1 mouse mAb (green). Blue: DRAQ5 fluorescent DNA dye. Red: Actin filaments have been labeled with Alexa Fluor- 555 phalloidin.



Flow cytometric analysis of HeLa cells using GFPT1 mouse mAb (green) and negative control (red).