

Product Name: TSHB Mouse Monoclonal Antibody**Catalog #: AMM81612**

For research use only.

Summary

Description	Mouse monoclonal Antibody
Host	Mouse
Application	IHC,ELISA,FC
Reactivity	Human
Conjugation	Unconjugated
Modification	Unmodified
Isotype	Mouse IgG2b
Clonality	Monoclonal
Form	Liquid
Concentration	1mg/ml
Storage	Aliquot and store at -20°C (valid for 12 months). Avoid freeze/thaw cycles.
Shipping	Ice bags
Buffer	Purified antibody in PBS with 0.05% sodium azide
Purification	Affinity Purification

Application

Dilution Ratio	IHC 1:200-1:1000,ELISA 1:5000-1:20000,FC 1:200-1:400
Molecular Weight	15.6kDa

Antigen Information

Gene Name	TSHB
Alternative Names	TSH-B; TSH-BETA
Gene ID	7252.0
SwissProt ID	P01222
Immunogen	Purified recombinant fragment of human TSHB (AA: 20-139) expressed in E. Coli.

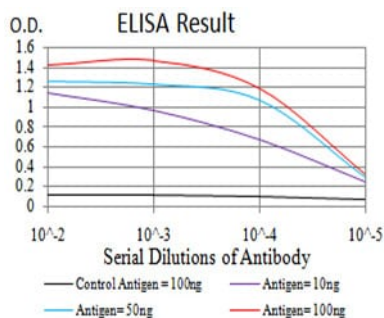
Background

The four human glycoprotein hormones chorionic gonadotropin (CG), luteinizing hormone (LH), follicle stimulating hormone (FSH), and thyroid stimulating hormone (TSH) are dimers consisting of alpha and beta subunits that are associated noncovalently. The alpha subunits of these hormones are identical, however, their beta chains are unique and confer biological

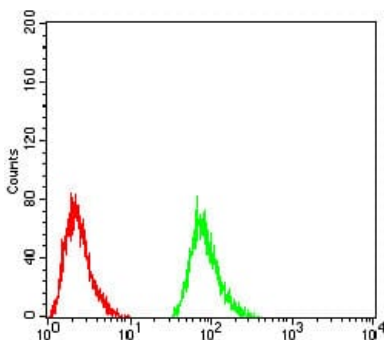
specificity. Thyroid stimulating hormone functions in the control of thyroid structure and metabolism. The protein encoded by this gene is the beta subunit of thyroid stimulating hormone. Mutations in this gene are associated with congenital central and secondary hypothyroidism and Hashimoto's thyroiditis. Alternative splicing of this gene results in multiple transcript variants.

Research Area

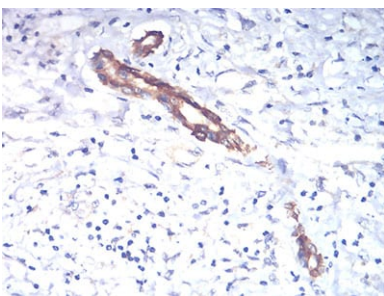
Image Data



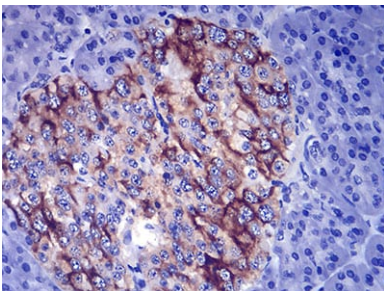
Black line: Control Antigen (100 ng); Purple line: Antigen (10 ng); Blue line: Antigen (50 ng); Red line: Antigen (100 ng)



Flow cytometric analysis of Hela cells using TSHB mouse mAb (green) and negative control (red).



Immunohistochemical analysis of paraffin-embedded human liver cancer tissues using TSHB mouse mAb with DAB staining.



Immunohistochemical analysis of paraffin-embedded human pancreas tissues using TSHB mouse mAb with DAB staining.