

---

**Product Name: CBX5 Mouse Monoclonal Antibody****Catalog #: AMM81594**

For research use only.

**Summary**

|                      |   |
|----------------------|---|
| <b>Description</b>   | Mouse monoclonal Antibody   |
| <b>Host</b>          | Mouse   |
| <b>Application</b>   | WB,IHC,ICC,ELISA  |
| <b>Reactivity</b>    | Human,Mouse   |
| <b>Conjugation</b>   | Unconjugated  |
| <b>Modification</b>  | Unmodified  |
| <b>Isotype</b>       | Mouse IgG1  |
| <b>Clonality</b>     | Monoclonal  |
| <b>Form</b>          | Liquid  |
| <b>Concentration</b> | 1mg/ml  |
| <b>Storage</b>       | Aliquot and store at -20°C (valid for 12 months). Avoid freeze/thaw cycles. |
| <b>Shipping</b>      | Ice bags  |
| <b>Buffer</b>        | Purified antibody in PBS with 0.05% sodium azide                            |
| <b>Purification</b>  | Affinity Purification   |

**Application**

|                         |  |
|-------------------------|--|
| <b>Dilution Ratio</b>   | WB 1:500-1:2000,IHC 1:200-1:1000,ICC 1:200-1:1000,ELISA 1:5000-1:20000 |
| <b>Molecular Weight</b> | 22.2kDa  |

**Antigen Information**

|                          |   |
|--------------------------|---|
| <b>Gene Name</b>         | CBX5  |
| <b>Alternative Names</b> | HP1; HP1A; HEL25  |
| <b>Gene ID</b>           | 23468.0   |
| <b>SwissProt ID</b>      | P45973  |
| <b>Immunogen</b>         | Purified recombinant fragment of human CBX5 (AA: 1-191) expressed in E. Coli. |

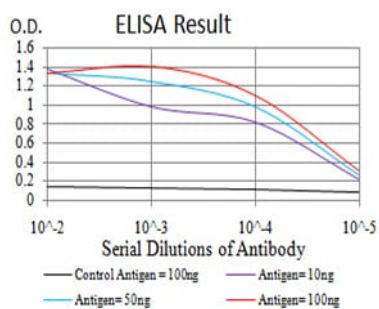
**Background**

This gene encodes a highly conserved nonhistone protein, which is a member of the heterochromatin protein family. The protein is enriched in the heterochromatin and associated with centromeres. The protein has a single N-terminal chromodomain which can bind to histone proteins via methylated lysine residues, and a C-terminal chromo shadow-domain

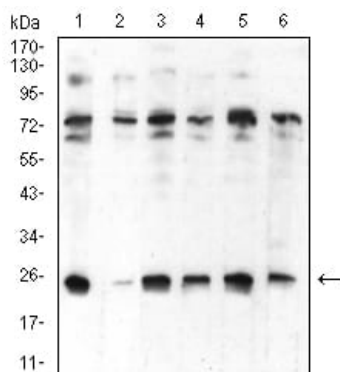
(CSD) which is responsible for the homodimerization and interaction with a number of chromatin-associated nonhistone proteins. The encoded product is involved in the formation of functional kinetochore through interaction with essential kinetochore proteins. The gene has a pseudogene located on chromosome 3. Multiple alternatively spliced variants, encoding the same protein, have been identified.

## Research Area

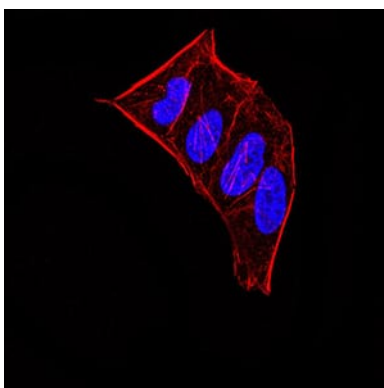
## Image Data



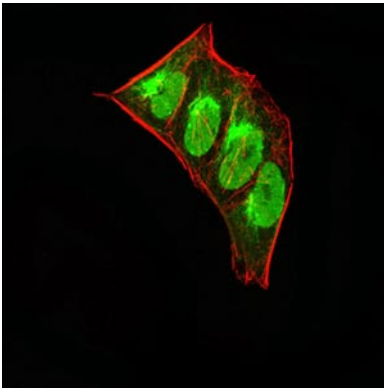
Black line: Control Antigen (100 ng); Purple line: Antigen(10ng); Blue line: Antigen (50 ng); Red line: Antigen (100 ng);



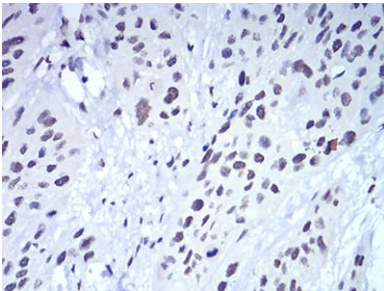
Western blot analysis using CBX5 mouse mAb against HeLa (1), NIH/3T3 (2), K562 (3), MCF-7 (4), Jurkat (5), and A431 (6) cell lysate.



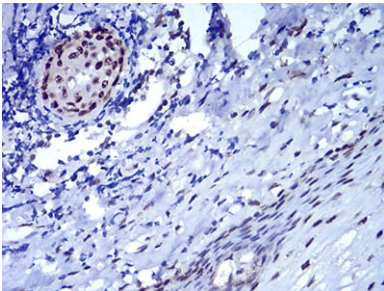
Immunofluorescence analysis of HeLa cells using CBX5 mouse mAb. Blue: DRAQ5 fluorescent DNA dye. Red: Actin filaments have been labeled with Alexa Fluor- 555 phalloidin.



Immunofluorescence analysis of HeLa cells using CBX5 mouse mAb (green). Blue: DRAQ5 fluorescent DNA dye. Red: Actin filaments have been labeled with Alexa Fluor- 555 phalloidin.



Immunohistochemical analysis of paraffin-embedded human esophageal cancer tissues using CBX5 mouse mAb with DAB staining.



Immunohistochemical analysis of paraffin-embedded human esophagus tissues using CBX5 mouse mAb with DAB staining.