

Product Name: CBX2 Mouse Monoclonal Antibody
Catalog #: AMM81560



Summary

Production Name	CBX2 Mouse Monoclonal Antibody
Description	Mouse Monoclonal Antibody
Host	Mouse
Application	WB,IHC,ICC,FC,ELISA
Reactivity	Human,Mouse,Rat,Rabbit,Monkey

Performance

Conjugation	Unconjugated
Modification	Unmodified
Isotype	Mouse IgG1
Clonality	Monoclonal
Form	Liquid
Storage	Store at 4°C short term. Aliquot and store at -20°C long term. Avoid freeze/thaw cycles.
Buffer	Purified antibody in PBS with 0.05% sodium azide
Purification	Affinity Purification

Immunogen

Gene Name	CBX2
Alternative Names	M33; CDCA6; SRXY5
Gene ID	84733.0
SwissProt ID	Q14781.Purified recombinant fragment of human CBX2 (AA: 402-525) expressed in E. Coli.

Application

Dilution Ratio	WB:1:500-1:2000,IHC:1:200-1:1000,ICC:1:200-1:1000,FC:1:200-1:400,ELISA:1:10000
Molecular Weight	56kDa

Background

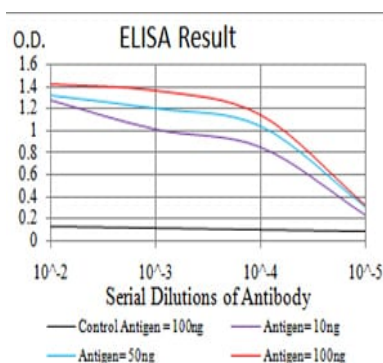
Product Name: CBX2 Mouse Monoclonal Antibody
Catalog #: AMM81560



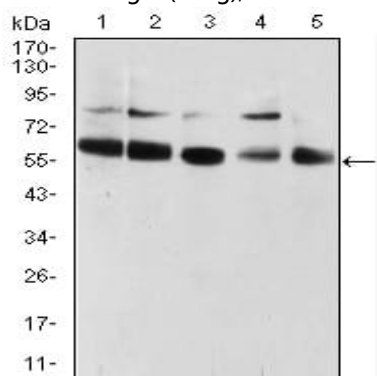
This gene encodes a component of the polycomb multiprotein complex, which is required to maintain the transcriptionally repressive state of many genes throughout development via chromatin remodeling and modification of histones. Disruption of this gene in mice results in male-to-female gonadal sex reversal. Mutations in this gene are also associated with gonadal dysgenesis in humans. Alternatively spliced transcript variants encoding different isoforms have been noted for this gene.

Research Area

Image Data

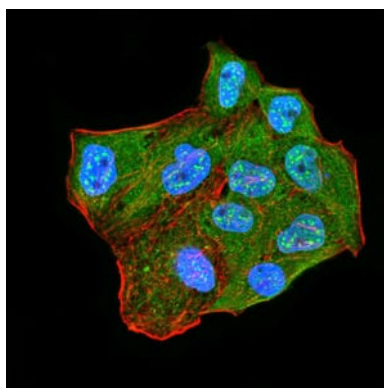


Black line: Control Antigen (100 ng); Purple line: Antigen(10ng); Blue line: Antigen (50 ng); Red line: Antigen (100 ng);

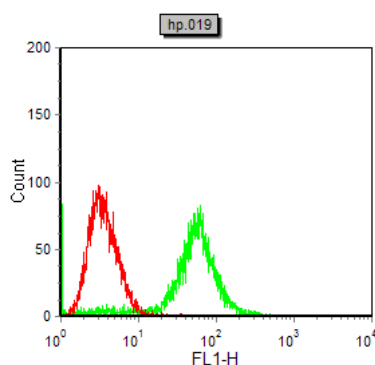


Western blot analysis using CBX2 mouse mAb against HUVEC (1), HEK293 (2), Hela (3), NIH/3T3 (4), and A431 (5) cell lysate.

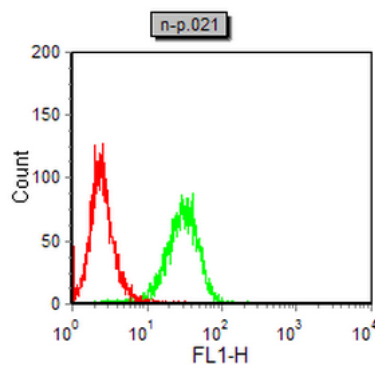
Product Name: CBX2 Mouse Monoclonal Antibody
Catalog #: AMM81560



Immunofluorescence analysis of MCF-7 cells using CBX2 mouse mAb (green). Blue: DRAQ5 fluorescent DNA dye. Red: Actin filaments have been labeled with Alexa Fluor-555 phalloidin. Secondary antibody from Fisher (Cat#: 35503)

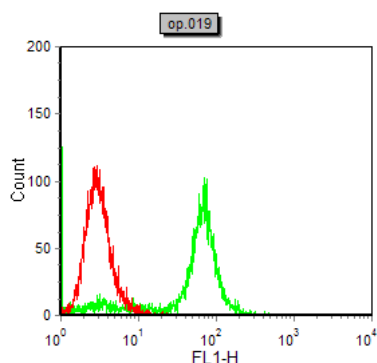


Flow cytometric analysis of HeLa cells using CBX2 mouse mAb (green) and negative control (red).

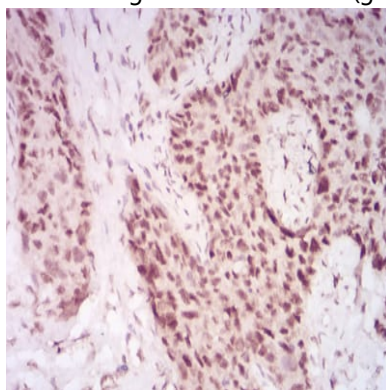


Flow cytometric analysis of NIH/3T3 cells using CBX2 mouse mAb (green) and negative control (red).

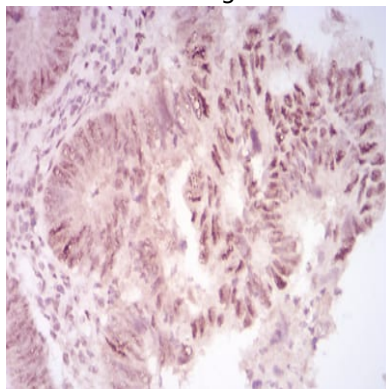
Product Name: CBX2 Mouse Monoclonal Antibody
Catalog #: AMM81560



Flow cytometric analysis of COS7 cells using CBX2 mouse mAb (green) and negative control (red).

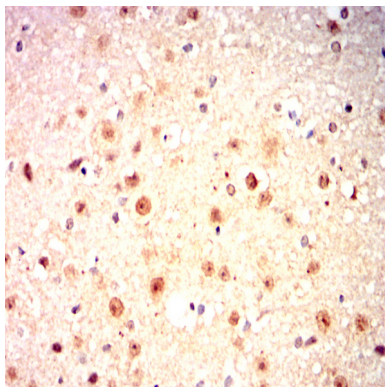


Immunohistochemical analysis of paraffin-embedded human cervical cancer tissues using CBX2 mouse mAb with DAB staining.



Immunohistochemical analysis of paraffin-embedded human rectum cancer tissues using CBX2 mouse mAb with DAB staining.

Product Name: CBX2 Mouse Monoclonal Antibody
Catalog #: AMM81560



Immunohistochemical analysis of paraffin-embedded Mouse cerebellum using CBX2 mouse mAb with DAB staining.

Note

For research use only.