

---

**Product Name: LRP1 Mouse Monoclonal Antibody****Catalog #: AMM81532**

For research use only.

**Summary**

<b>Description</b>	Mouse monoclonal Antibody
<b>Host</b>	Mouse
<b>Application</b>	IHC,ICC,ELISA,FC
<b>Reactivity</b>	Human
<b>Conjugation</b>	Unconjugated
<b>Modification</b>	Unmodified
<b>Isotype</b>	Mouse IgG1
<b>Clonality</b>	Monoclonal
<b>Form</b>	Liquid
<b>Concentration</b>	1mg/ml
<b>Storage</b>	Aliquot and store at -20°C (valid for 12 months). Avoid freeze/thaw cycles.
<b>Shipping</b>	Ice bags
<b>Buffer</b>	Purified antibody in PBS with 0.05% sodium azide
<b>Purification</b>	Affinity Purification

**Application**

<b>Dilution Ratio</b>	IHC 1:200-1:1000,ICC 1:200-1:1000,ELISA 1:5000-1:20000,FC 1:200-1:400
<b>Molecular Weight</b>	50.5kDa

**Antigen Information**

<b>Gene Name</b>	LRP1
<b>Alternative Names</b>	APR; LRP; A2MR; CD91; APOER; LRP1A; TGFBR5; IGFBP3R
<b>Gene ID</b>	4035.0
<b>SwissProt ID</b>	Q07954
<b>Immunogen</b>	Purified recombinant fragment of human LRP1 (AA: 20-155) expressed in E. Coli.

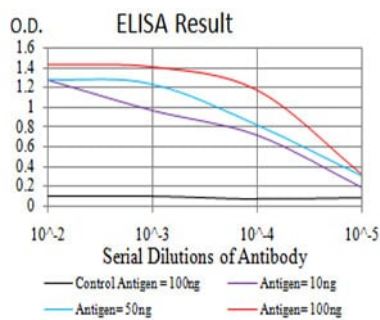
**Background**

The protein encoded by this gene is an endocytic receptor involved in several cellular processes, including intracellular signaling, lipid homeostasis, and clearance of apoptotic cells. In addition, the encoded protein is necessary for the A2M-mediated clearance of secreted amyloid precursor protein and beta-amyloid, the main component of amyloid plaques found in

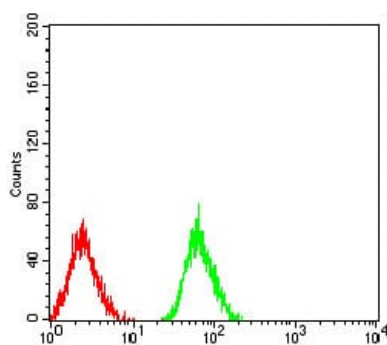
Alzheimer patients. Expression of this gene decreases with age and has been found to be lower than controls in brain tissue from Alzheimer patients.

## Research Area

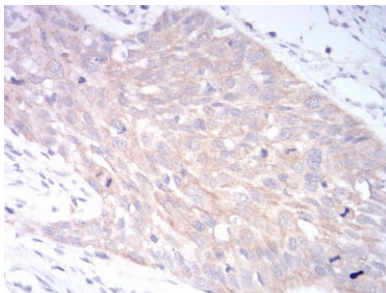
### Image Data



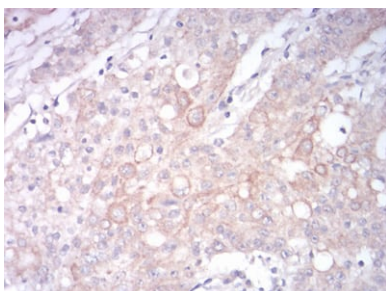
Black line: Control Antigen (100 ng); Purple line: Antigen(10ng); Blue line: Antigen (50 ng); Red line: Antigen (100 ng);



Flow cytometric analysis of Jurkat cells using LRP1 mouse mAb (green) and negative control (red).



Immunohistochemical analysis of paraffin-embedded human esophageal cancer tissues using LRP1 mouse mAb with DAB staining.



Immunohistochemical analysis of paraffin-embedded human stomach cancer tissues using LRP1 mouse mAb with DAB staining.