

**Product Name: ATG16L1 Mouse Monoclonal Antibody****Catalog #: AMM81530**

For research use only.

**Summary**

<b>Description</b>	Mouse monoclonal Antibody
<b>Host</b>	Mouse
<b>Application</b>	WB,ELISA,FC
<b>Reactivity</b>	Human,Mouse,Rat
<b>Conjugation</b>	Unconjugated
<b>Modification</b>	Unmodified
<b>Isotype</b>	Mouse IgG1
<b>Clonality</b>	Monoclonal
<b>Form</b>	Liquid
<b>Concentration</b>	1mg/ml
<b>Storage</b>	Aliquot and store at -20°C (valid for 12 months). Avoid freeze/thaw cycles.
<b>Shipping</b>	Ice bags
<b>Buffer</b>	Purified antibody in PBS with 0.05% sodium azide
<b>Purification</b>	Affinity Purification

**Application**

<b>Dilution Ratio</b>	WB 1:500-1:2000,ELISA 1:5000-1:20000,FC 1:200-1:400
<b>Molecular Weight</b>	68.3kDa

**Antigen Information**

<b>Gene Name</b>	ATG16L1
<b>Alternative Names</b>	IBD10; WDR30; APG16L; ATG16A; ATG16L
<b>Gene ID</b>	55054.0
<b>SwissProt ID</b>	Q676U5
<b>Immunogen</b>	Purified recombinant fragment of human ATG16L1 (AA: 11-257) expressed in E. Coli.

**Background**

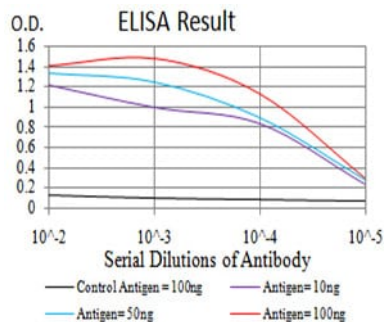
The protein encoded by this gene is part of a large protein complex that is necessary for autophagy, the major process by which intracellular components are targeted to lysosomes for degradation. Defects in this gene are a cause of susceptibility to inflammatory bowel disease type 10 (IBD10). Several transcript variants encoding different isoforms have been found for this

gene.

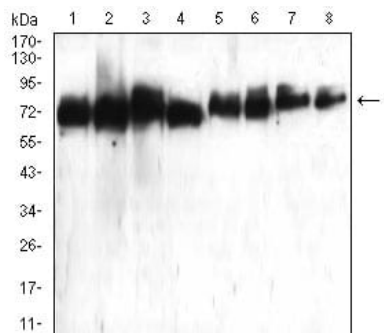
## Research Area

Autophagy

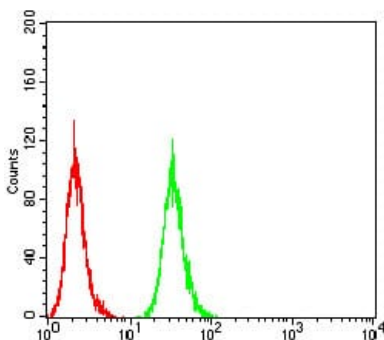
## Image Data



Black line: Control Antigen (100 ng); Purple line: Antigen(10ng); Blue line: Antigen (50 ng); Red line: Antigen (100 ng);



Western blot analysis using ATG16L1 mouse mAb against HeLa (1), Raji (2), PANC-1 (3), Jurkat (4), PC-12 (5), HepG2 (6), Hek293 (7), and NIH3T3 (8) cell lysate.



Flow cytometric analysis of HeLa cells using ATG16L1 mouse mAb (green) and negative control (red).