

Product Name: ATG16L1 Mouse Monoclonal Antibody**Catalog #: AMM81529**

For research use only.

Summary

Description	Mouse monoclonal Antibody
Host	Mouse
Application	WB,ELISA
Reactivity	Human
Conjugation	Unconjugated
Modification	Unmodified
Isotype	Mouse IgG1
Clonality	Monoclonal
Form	Liquid
Concentration	1mg/ml
Storage	Aliquot and store at -20°C (valid for 12 months). Avoid freeze/thaw cycles.
Shipping	Ice bags
Buffer	Purified antibody in PBS with 0.05% sodium azide
Purification	Affinity Purification

Application

Dilution Ratio	WB 1:500-1:2000,ELISA 1:5000-1:20000
Molecular Weight	68.3kDa

Antigen Information

Gene Name	ATG16L1
Alternative Names	IBD10; WDR30; APG16L; ATG16A; ATG16L
Gene ID	55054.0
SwissProt ID	Q676U5
Immunogen	Purified recombinant fragment of human ATG16L1 (AA: 11-257) expressed in E. Coli.

Background

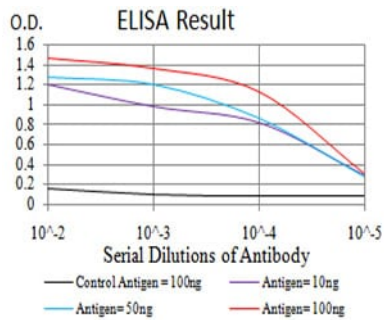
The protein encoded by this gene is part of a large protein complex that is necessary for autophagy, the major process by which intracellular components are targeted to lysosomes for degradation. Defects in this gene are a cause of susceptibility to inflammatory bowel disease type 10 (IBD10). Several transcript variants encoding different isoforms have been found for this

gene.

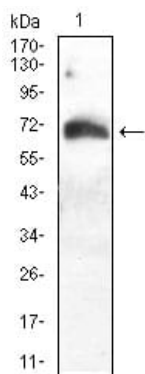
Research Area

Autophagy

Image Data



Black line: Control Antigen (100 ng); Purple line: Antigen(10ng); Blue line: Antigen (50 ng); Red line: Antigen (100 ng);



Western blot analysis using ATG16L1 mouse mAb against Hela (1) cell lysate.