

Product Name: RALA Mouse Monoclonal Antibody
Catalog #: AMM81515



Summary

Production Name	RALA Mouse Monoclonal Antibody
Description	Mouse Monoclonal Antibody
Host	Mouse
Application	WB,IHC,ICC,FC,ELISA
Reactivity	Human,Mouse,Rat,Monkey

Performance

Conjugation	Unconjugated
Modification	Unmodified
Isotype	Mouse IgG1
Clonality	Monoclonal
Form	Liquid
Storage	Store at 4°C short term. Aliquot and store at -20°C long term. Avoid freeze/thaw cycles.
Buffer	Purified antibody in PBS with 0.05% sodium azide
Purification	Affinity Purification

Immunogen

Gene Name	RALA
Alternative Names	RAL
Gene ID	5898.0
SwissProt ID	P11233.Purified recombinant fragment of human RALA (AA: 71-203) expressed in E. Coli.

Application

Dilution Ratio	WB:1:500-1:2000,IHC:1:100-1:500,ICC:1:50-1:500,FC:1:200-1:400,ELISA:1:10000
Molecular Weight	23.6kDa

Background

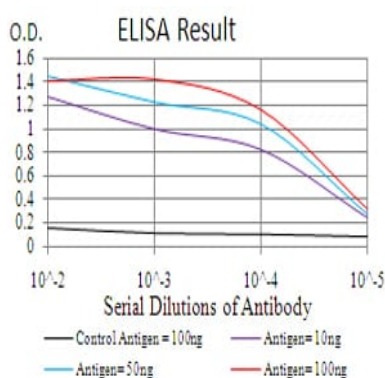
Product Name: RALA Mouse Monoclonal Antibody
Catalog #: AMM81515



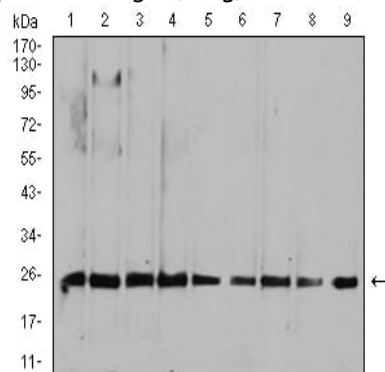
The product of this gene belongs to the small GTPase superfamily, Ras family of proteins. GTP-binding proteins mediate the transmembrane signaling initiated by the occupancy of certain cell surface receptors. This gene encodes a low molecular mass ras-like GTP-binding protein that shares about 50% similarity with other ras proteins.

Research Area

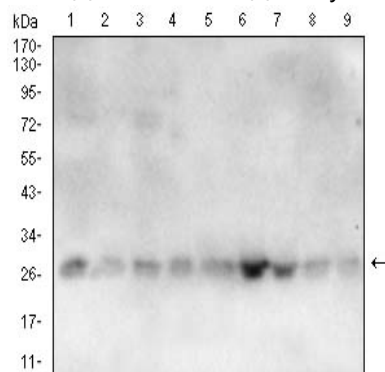
Image Data



Black line: Control Antigen (100 ng); Purple line: Antigen(10ng); Blue line: Antigen (50 ng); Red line: Antigen (100 ng);



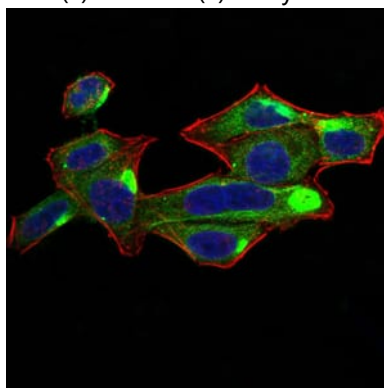
Western blot analysis using RALA mouse mAb against HepG2 (1), MCF-7 (2), A549 (3), K562 (4), Raji (5), MOLT4 (6), HeLa (7), COS7 (8), and NIH3T3 (9) cell lysate.



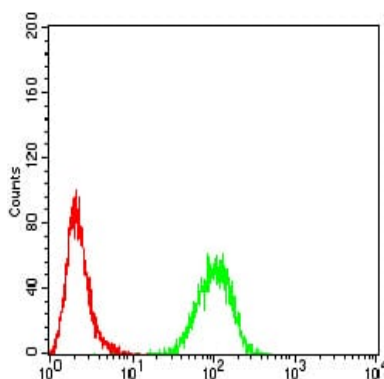
Product Name: RALA Mouse Monoclonal Antibody
Catalog #: AMM81515



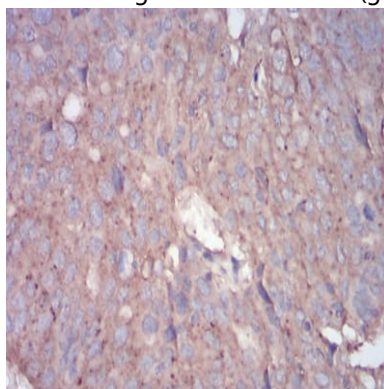
Western blot analysis using RALA mouse mAb against Raw264.7(1)PC-12(2)NRK(3)C2C12(4)C6(5)L1210(6)F9(7)COS-7(8)CHO3D10(9) cell lysate.



Immunofluorescence analysis of Hela cells using RALA mouse mAb (green). Blue: DRAQ5 fluorescent DNA dye. Red: Actin filaments have been labeled with Alexa Fluor- 555 phalloidin. Secondary antibody from Fisher (Cat#: 35503)

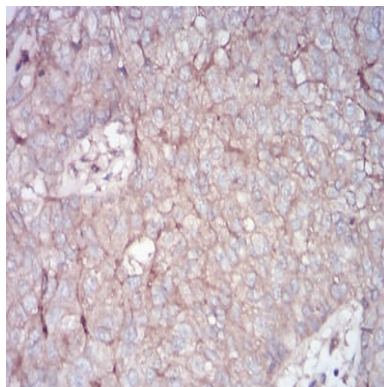


Flow cytometric analysis of MCF-7 cells using RALA mouse mAb (green) and negative control (red).

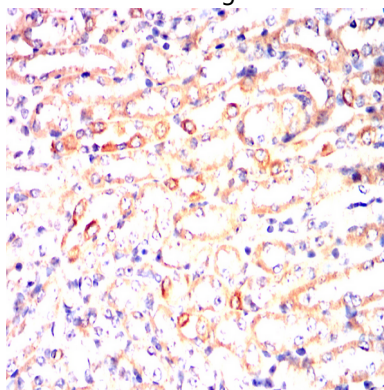


Immunohistochemical analysis of paraffin-embedded human ovarian cancer tissues using RALA mouse mAb with DAB staining.

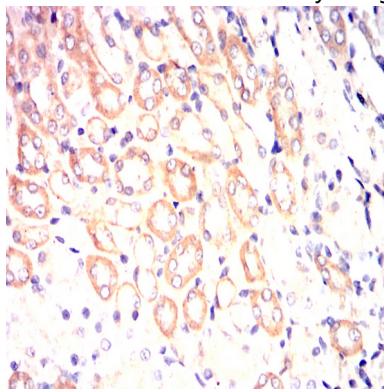
Product Name: RALA Mouse Monoclonal Antibody
Catalog #: AMM81515



Immunohistochemical analysis of paraffin-embedded human bladder cancer tissues using RALA mouse mAb with DAB staining.



Immunohistochemical analysis of paraffin-embedded Mouse kidney using RALA mouse mAb with DAB staining.



Immunohistochemical analysis of paraffin-embedded Rat kidney using RALA mouse mAb with DAB staining.

Note

For research use only.