

## Summary

<b>Production Name</b>	GLI1 Mouse Monoclonal Antibody
<b>Description</b>	Mouse Monoclonal Antibody
<b>Host</b>	Mouse
<b>Application</b>	IHC,ICC,FC,ELISA
<b>Reactivity</b>	Human

## Performance

<b>Conjugation</b>	Unconjugated
<b>Modification</b>	Unmodified
<b>Isotype</b>	Mouse IgG1
<b>Clonality</b>	Monoclonal
<b>Form</b>	Liquid
<b>Storage</b>	Store at 4°C short term. Aliquot and store at -20°C long term. Avoid freeze/thaw cycles.
<b>Buffer</b>	Purified antibody in PBS with 0.05% sodium azide
<b>Purification</b>	Affinity Purification

## Immunogen

<b>Gene Name</b>	GLI1
<b>Alternative Names</b>	GLI
<b>Gene ID</b>	2735.0
<b>SwissProt ID</b>	P08151 .Purified recombinant fragment of human GLI1 (AA: 284-449) expressed in E. Coli.

## Application

<b>Dilution Ratio</b>	IHC:1:200-1:1000,ICC:1:200-1:1000,FC:1:200-1:400,ELISA:1:10000
<b>Molecular Weight</b>	118kDa

## Background

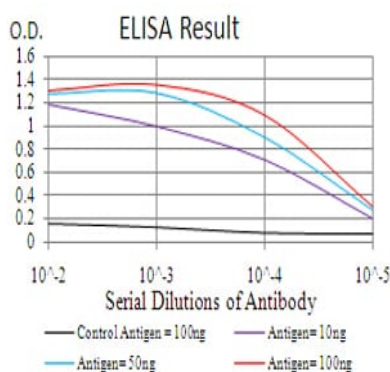
**Product Name: GLI1 Mouse Monoclonal Antibody**  
**Catalog #: AMM81512**



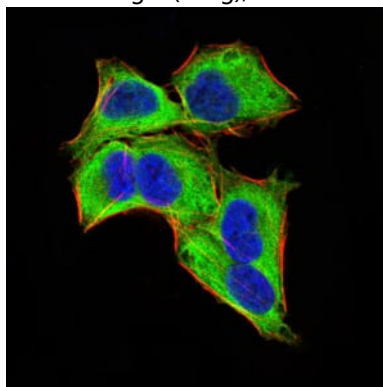
This gene encodes a member of the Kruppel family of zinc finger proteins. The encoded transcription factor is activated by the sonic hedgehog signal transduction cascade and regulates stem cell proliferation. The activity and nuclear localization of this protein is negatively regulated by p53 in an inhibitory loop. Multiple transcript variants encoding different isoforms have been found for this gene. <br />

## Research Area

## Image Data

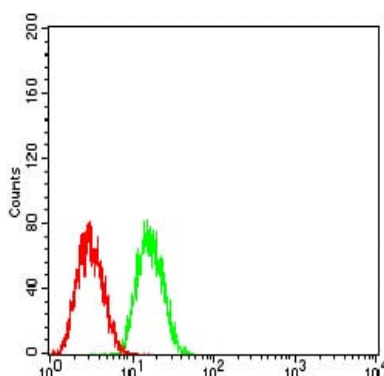


Black line: Control Antigen (100 ng); Purple line: Antigen(10ng); Blue line: Antigen (50 ng); Red line: Antigen (100 ng);

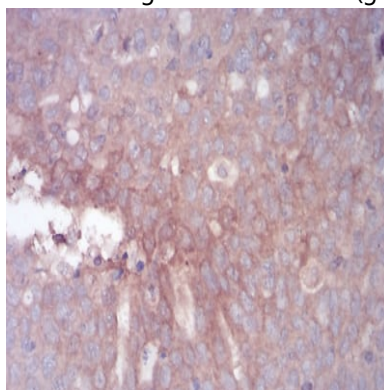


Immunofluorescence analysis of HeLa cells using GLI1 mouse mAb (green). Blue: DRAQ5 fluorescent DNA dye. Red: Actin filaments have been labeled with Alexa Fluor- 555 phalloidin. Secondary antibody from Fisher (Cat#: 35503)

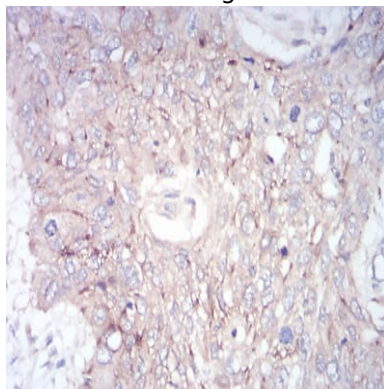
**Product Name: GLI1 Mouse Monoclonal Antibody**  
**Catalog #: AMM81512**



Flow cytometric analysis of HepG2 cells using GLI1 mouse mAb (green) and negative control (red).



Immunohistochemical analysis of paraffin-embedded human ovarian cancer tissues using GLI1 mouse mAb with DAB staining.



Immunohistochemical analysis of paraffin-embedded human esophageal cancer tissues using GLI1 mouse mAb with DAB staining.

## Note

For research use only.