

Product Name: EMD Mouse Monoclonal Antibody**Catalog #: AMM81476**

For research use only.

Summary

Description	Mouse monoclonal Antibody
Host	Mouse
Application	ICC,ELISA,FC
Reactivity	Human
Conjugation	Unconjugated
Modification	Unmodified
Isotype	Mouse IgG1
Clonality	Monoclonal
Form	Liquid
Concentration	1mg/ml
Storage	Aliquot and store at -20°C (valid for 12 months). Avoid freeze/thaw cycles.
Shipping	Ice bags
Buffer	Purified antibody in PBS with 0.05% sodium azide
Purification	Affinity Purification

Application

Dilution Ratio	ICC 1:200-1:1000,ELISA 1:5000-1:20000,FC 1:200-1:400
Molecular Weight	29kDa

Antigen Information

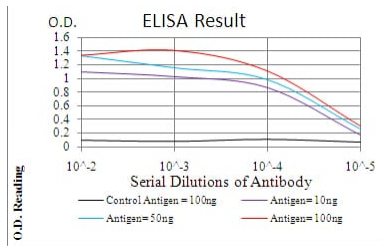
Gene Name	EMD
Alternative Names	STA; EDMD; LEMD5
Gene ID	2010.0
SwissProt ID	P50402
Immunogen	Purified recombinant fragment of human *** (AA: 1-222) expressed in E. Coli.

Background

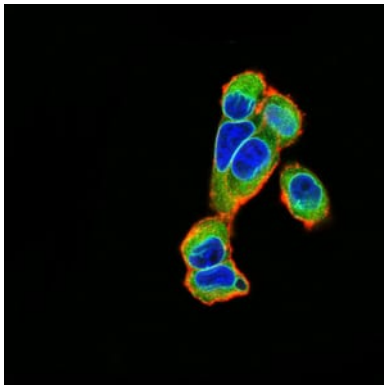
Emerin is a serine-rich nuclear membrane protein and a member of the nuclear lamina-associated protein family. It mediates membrane anchorage to the cytoskeleton. Dreifuss-Emery muscular dystrophy is an X-linked inherited degenerative myopathy resulting from mutation in the emerin gene.

Research Area

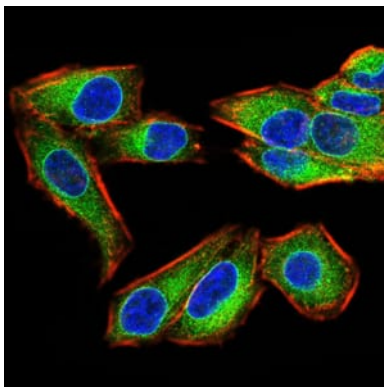
Image Data



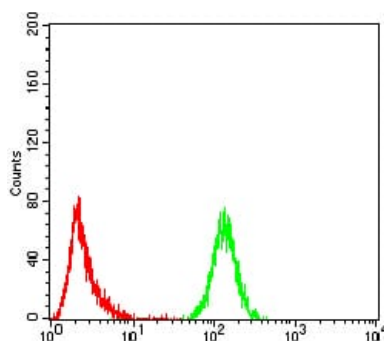
Black line: Control Antigen (100 ng); Purple line: Antigen(10ng); Blue line: Antigen (50 ng); Red line: Antigen (100 ng);



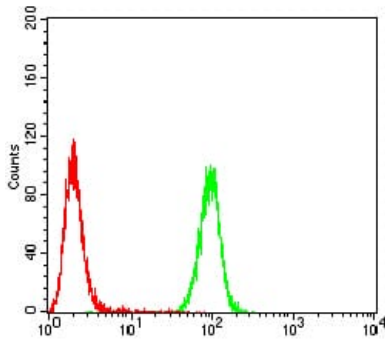
Immunofluorescence analysis of A549 cells using EMD mouse mAb (green). Blue: DRAQ5 fluorescent DNA dye. Red: Actin filaments have been labeled with Alexa Fluor- 555 phalloidin.



Immunofluorescence analysis of HeLa cells using EMD mouse mAb (green). Blue: DRAQ5 fluorescent DNA dye. Red: Actin filaments have been labeled with Alexa Fluor- 555 phalloidin.



Flow cytometric analysis of K562 cells using EMD mouse mAb (green) and negative control (red).



Flow cytometric analysis of A549 cells using EMD mouse mAb (green) and negative control (red).