

---

**Product Name: CSF3 Mouse Monoclonal Antibody****Catalog #: AMM81471**

For research use only.

**Summary**

<b>Description</b>	Mouse monoclonal Antibody
<b>Host</b>	Mouse
<b>Application</b>	IHC,ICC,ELISA
<b>Reactivity</b>	Human
<b>Conjugation</b>	Unconjugated
<b>Modification</b>	Unmodified
<b>Isotype</b>	Mouse IgG2a
<b>Clonality</b>	Monoclonal
<b>Form</b>	Liquid
<b>Concentration</b>	1mg/ml
<b>Storage</b>	Aliquot and store at -20°C (valid for 12 months). Avoid freeze/thaw cycles.
<b>Shipping</b>	Ice bags
<b>Buffer</b>	Purified antibody in PBS with 0.05% sodium azide
<b>Purification</b>	Affinity Purification

**Application**

<b>Dilution Ratio</b>	IHC 1:200-1:1000,ICC 1:200-1:1000,ELISA 1:5000-1:20000
<b>Molecular Weight</b>	22.3kDa

**Antigen Information**

<b>Gene Name</b>	CSF3
<b>Alternative Names</b>	GCSF; CSF3OS; C17orf33
<b>Gene ID</b>	1440.0
<b>SwissProt ID</b>	P09919
<b>Immunogen</b>	Purified recombinant fragment of human CSF3 (AA: 1-207) expressed in E. Coli.

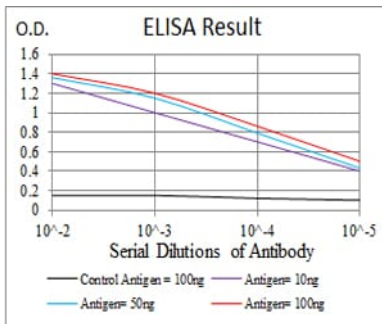
**Background**

The protein encoded by this gene is a cytokine that controls the production, differentiation, and function of granulocytes. The active protein is found extracellularly. Alternatively spliced transcript variants have been described for this gene. [provided by RefSeq, May 2010]

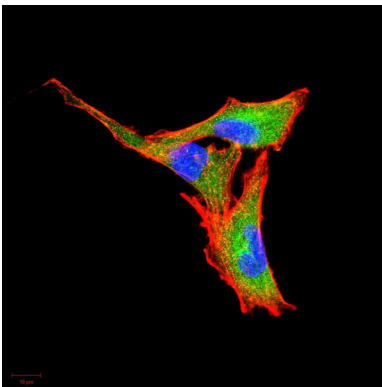
## Research Area

PI3K-Akt signaling pathway

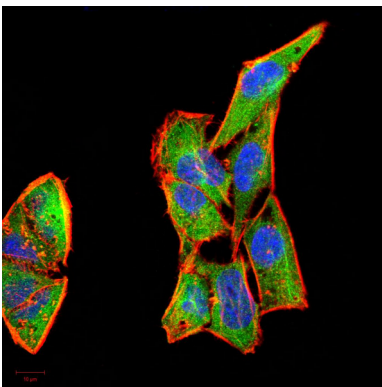
## Image Data



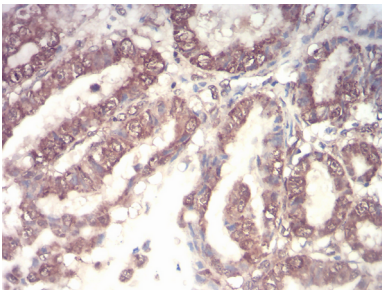
Black line: Control Antigen (100 ng); Purple line: Antigen(10ng); Blue line: Antigen (50 ng); Red line: Antigen (100 ng);



Immunofluorescence analysis of A549 cells using CSF3 mouse mAb (green). Blue: DRAQ5 fluorescent DNA dye. Red: Actin filaments have been labeled with Alexa Fluor- 555 phalloidin.



Immunofluorescence analysis of HeLa cells using CSF3 mouse mAb (green). Blue: DRAQ5 fluorescent DNA dye. Red: Actin filaments have been labeled with Alexa Fluor- 555 phalloidin.



Immunohistochemical analysis of paraffin-embedded human esophageal cancer tissues using CSF3 mouse mAb with DAB staining.