
Product Name: PRL Mouse Monoclonal Antibody**Catalog #: AMM81346**

For research use only.

Summary

Description	Mouse monoclonal Antibody
Host	Mouse
Application	IHC,ICC,ELISA,FC
Reactivity	Human
Conjugation	Unconjugated
Modification	Unmodified
Isotype	Mouse IgG2b
Clonality	Monoclonal
Form	Liquid
Concentration	1mg/ml
Storage	Aliquot and store at -20°C (valid for 12 months). Avoid freeze/thaw cycles.
Shipping	Ice bags
Buffer	Purified antibody in PBS with 0.05% sodium azide.
Purification	Affinity Purification

Application

Dilution Ratio	IHC 1:200-1:1000,ICC 1:200-1:1000,ELISA 1:5000-1:20000,FC 1:200-1:400
Molecular Weight	26kDa

Antigen Information

Gene Name	PRL
Alternative Names	PRL
Gene ID	5617.0
SwissProt ID	P01236
Immunogen	Purified recombinant fragment of human PRL (AA: 65-173) expressed in E. Coli.

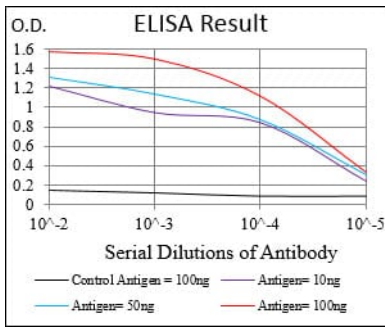
Background

This gene encodes the anterior pituitary hormone prolactin. This secreted hormone is a growth regulator for many tissues, including cells of the immune system. It may also play a role in cell survival by suppressing apoptosis, and it is essential for lactation. Alternative splicing results in multiple transcript variants that encode the same protein.

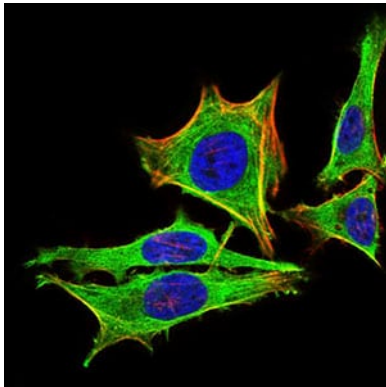
Research Area

PI3K-Akt signaling pathway

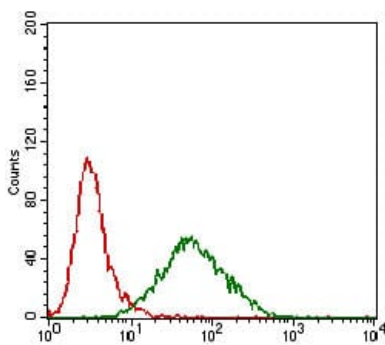
Image Data



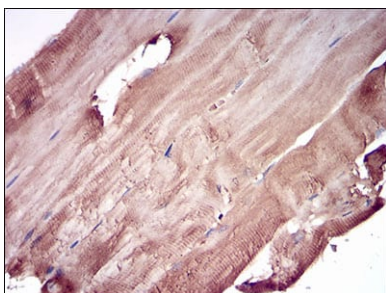
Black line: Control Antigen (100 ng); Purple line: Antigen(10ng); Blue line: Antigen (50 ng); Red line: Antigen (100 ng);



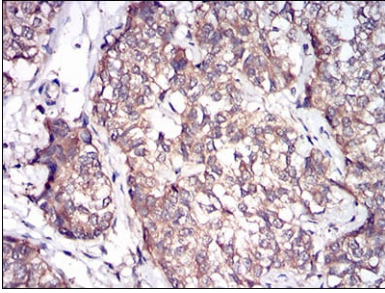
Immunofluorescence analysis of HeLa cells using PRL mouse mAb (green). Blue: DRAQ5 fluorescent DNA dye. Red: Actin filaments have been labeled with Alexa Fluor-555 phalloidin.



Flow cytometric analysis of HeLa cells using PRL mouse mAb (green) and negative control (red).



Immunohistochemical analysis of paraffin-embedded human muscle tissues using PRL mouse mAb with DAB staining.



Immunohistochemical analysis of paraffin-embedded human bladder cancer tissues using PRL mouse mAb with DAB staining.