

Product Name: MMEL1 Mouse Monoclonal Antibody**Catalog #: AMM81345**

For research use only.

Summary

Description	Mouse monoclonal Antibody
Host	Mouse
Application	IHC,ELISA,FC
Reactivity	Human
Conjugation	Unconjugated
Modification	Unmodified
Isotype	Mouse IgG1
Clonality	Monoclonal
Form	Liquid
Concentration	1mg/ml
Storage	Aliquot and store at -20°C (valid for 12 months). Avoid freeze/thaw cycles.
Shipping	Ice bags
Buffer	Purified antibody in PBS with 0.05% sodium azide.
Purification	Affinity Purification

Application

Dilution Ratio	IHC 1:200-1:1000,ELISA 1:5000-1:20000,FC 1:200-1:400
Molecular Weight	89.4kDa

Antigen Information

Gene Name	MMEL1
Alternative Names	NL1; NL2; SEP; NEP2; MMEL2; NEPII
Gene ID	79258.0
SwissProt ID	Q495T6
Immunogen	Purified recombinant fragment of human MMEL1 (AA: 1-107) expressed in E. Coli.

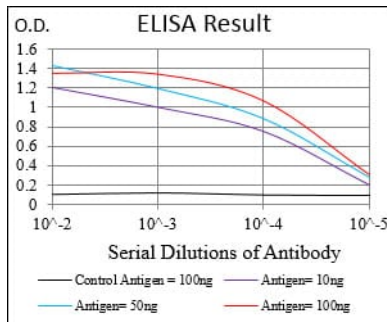
Background

The protein encoded by this gene is a member of the neutral endopeptidase (NEP) or membrane metallo-endopeptidase (MME) family. Family members play important roles in pain perception, arterial pressure regulation, phosphate metabolism and homeostasis. This protein is a type II transmembrane protein and is thought to be expressed as a secreted protein. This gene is

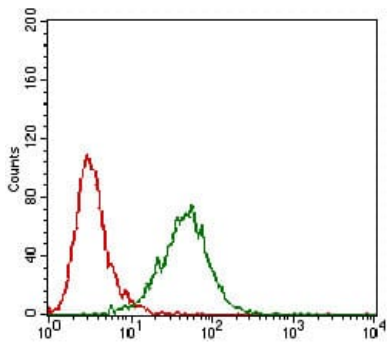
expressed mainly in testis with weak expression in the brain, kidney, and heart.

Research Area

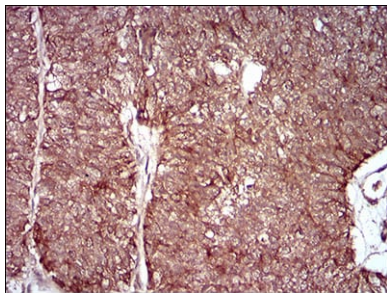
Image Data



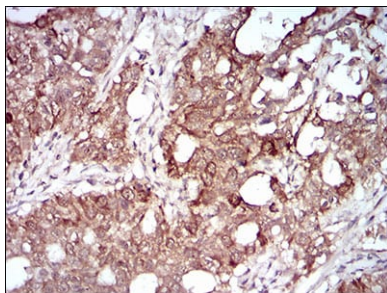
Black line: Control Antigen (100 ng); Purple line: Antigen(10ng); Blue line: Antigen (50 ng); Red line: Antigen (100 ng);



Flow cytometric analysis of Hela cells using MMEL1 mouse mAb (green) and negative control (red).



Immunohistochemical analysis of paraffin-embedded human ovarian cancer tissues using MMEL1 mouse mAb with DAB staining.



Immunohistochemical analysis of paraffin-embedded human cervical cancer tissues using MMEL1 mouse mAb with DAB staining.