
Product Name: CNN1 Mouse Monoclonal Antibody**Catalog #: AMM81335**

For research use only.

Summary

Description	Mouse monoclonal Antibody
Host	Mouse
Application	WB,IHC,ELISA
Reactivity	Human,Mouse,Rat,Monkey,Rabbit
Conjugation	Unconjugated
Modification	Unmodified
Isotype	Mouse IgG1
Clonality	Monoclonal
Form	Liquid
Concentration	1mg/ml
Storage	Aliquot and store at -20°C (valid for 12 months). Avoid freeze/thaw cycles.
Shipping	Ice bags
Buffer	Purified antibody in PBS with 0.05% sodium azide.
Purification	Affinity Purification

Application

Dilution Ratio	WB 1:500-1:2000,IHC 1:100-1:500,ELISA 1:5000-1:20000
Molecular Weight	33.2kDa

Antigen Information

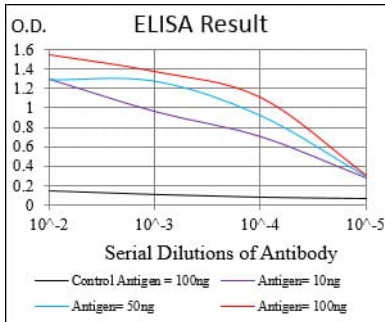
Gene Name	CNN1
Alternative Names	SMCC; Sm-Calp
Gene ID	1264.0
SwissProt ID	P51911
Immunogen	Purified recombinant fragment of human CNN1 (AA: 16-165) expressed in E. Coli.

Background

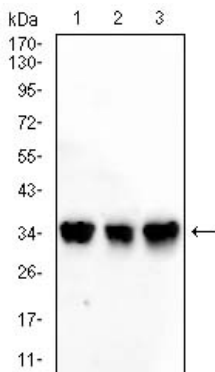
Calponin h1 (CN) is a differentiation marker of smooth muscle cells that has been reported to be down-regulated in the blood vessels of several human tumors.

Research Area

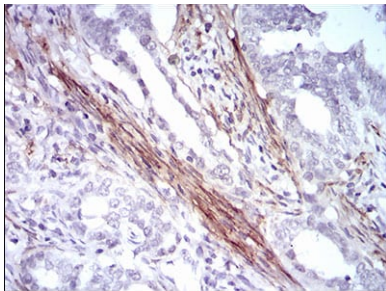
Image Data



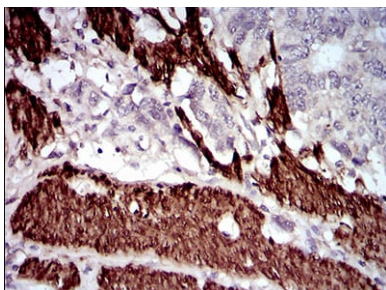
Black line: Control Antigen (100 ng); Purple line: Antigen(10ng); Blue line: Antigen (50 ng); Red line: Antigen (100 ng);



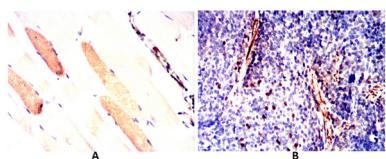
Western blot analysis using CNN1 mouse mAb against C2C12(1) COS-7 (2) HELA(3) cell lysate.



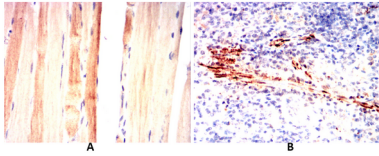
Immunohistochemical analysis of paraffin-embedded human cervical cancer tissues using CNN1 mouse mAb with DAB staining.



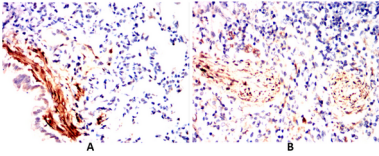
Immunohistochemical analysis of paraffin-embedded human esophageal cancer tissues using CNN1 mouse mAb with DAB staining.



Immunohistochemical analysis of paraffin-embedded Mouse spleen(A) Mouse muscle(B) using CNN1 mouse mAb with DAB staining.



Immunohistochemical analysis of paraffin-embedded Rat spleen(A) Rat muscle(B) using CNN1 mouse mAb with DAB staining.



Immunohistochemical analysis of paraffin-embedded Rabbit lung using CNN1 mouse mAb with DAB staining.