
Product Name: EPCAM Mouse Monoclonal Antibody**Catalog #: AMM81330**

For research use only.

Summary

Description	Mouse monoclonal Antibody
Host	Mouse
Application	WB,IHC,ELISA,FC
Reactivity	Human,Mouse,Rat
Conjugation	Unconjugated
Modification	Unmodified
Isotype	Mouse IgG1
Clonality	Monoclonal
Form	Liquid
Concentration	1mg/ml
Storage	Aliquot and store at -20°C (valid for 12 months). Avoid freeze/thaw cycles.
Shipping	Ice bags
Buffer	Purified antibody in PBS with 0.05% sodium azide.
Purification	Affinity Purification

Application

Dilution Ratio	WB 1:500-1:2000,IHC 1:200-1:1000,ELISA 1:5000-1:20000,FC 1:200-1:400
Molecular Weight	35kDa

Antigen Information

Gene Name	EPCAM
Alternative Names	ESA; KSA; M4S1; MK-1; DIAR5; EGP-2; EGP40; KS1/4; MIC18; TROP1; EGP314; HNPCC8; TACSTD1
Gene ID	4072.0
SwissProt ID	P16422
Immunogen	Purified recombinant fragment of human EPCAM (AA: 24-265) expressed in E. Coli.

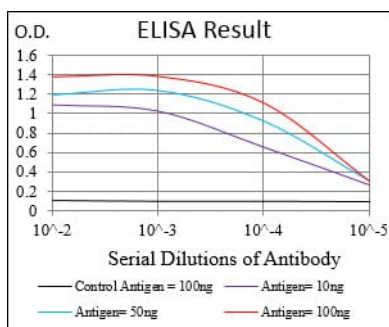
Background

This gene encodes a carcinoma-associated antigen and is a member of a family that includes at least two type I membrane proteins. This antigen is expressed on most normal epithelial cells and gastrointestinal carcinomas and functions as a

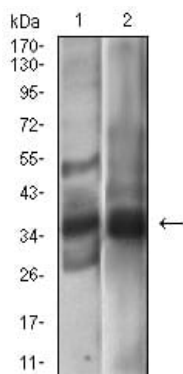
homotypic calcium-independent cell adhesion molecule. The antigen is being used as a target for immunotherapy treatment of human carcinomas. Mutations in this gene result in congenital tufting enteropathy.

Research Area

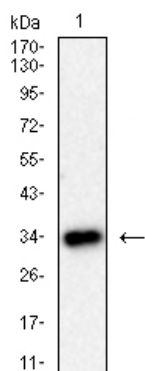
Image Data



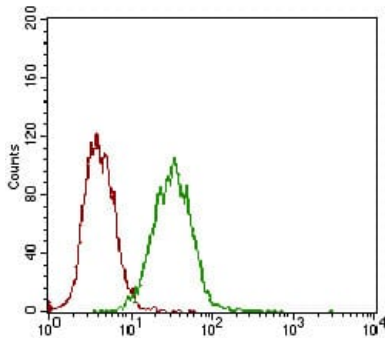
Black line: Control Antigen (100 ng); Purple line: Antigen(10ng); Blue line: Antigen (50 ng); Red line: Antigen (100 ng);



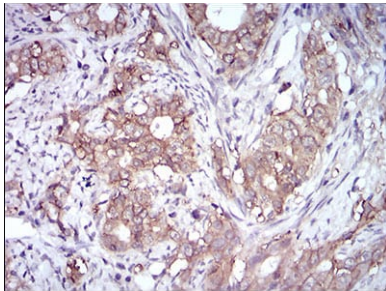
Western blot analysis using EPCAM mouse mAb against A431 (1), MCF-7 (2) cell lysate.



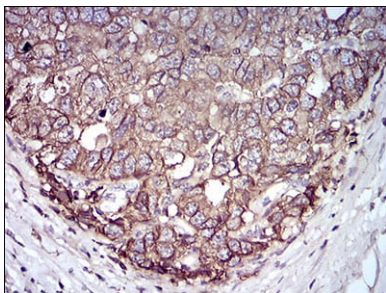
Western blot analysis using EPCAM mouse mAb against PC-12 cell lysate.



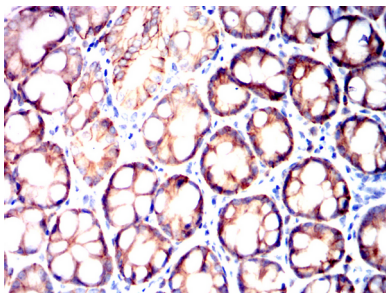
Flow cytometric analysis of A431 cells using EPCAM mouse mAb (green) and negative control (red).



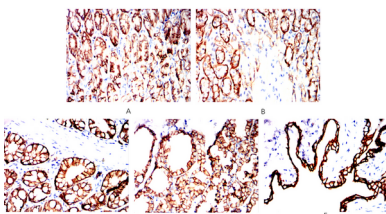
Immunohistochemical analysis of paraffin-embedded human cervical cancer tissues using EPCAM mouse mAb with DAB staining.



Immunohistochemical analysis of paraffin-embedded human esophageal cancer tissues using EPCAM mouse mAb with DAB staining.



Immunohistochemical analysis of paraffin-embedded Mouse colon using EPCAM mouse mAb with DAB staining.



Immunohistochemical analysis of paraffin-embedded Rat stomach(A)Rat kidney(B)Rat colon(C)Rat thyroid(D)Rat bladder(E) using EPCAM mouse mAb with DAB staining.