

Product Name: CD10 Mouse Monoclonal Antibody**Catalog #: AMM81285**

For research use only.

Summary

| | |
|----------------------|---|
| Description | Mouse monoclonal Antibody |
| Host | Mouse |
| Application | WB,IHC,ELISA |
| Reactivity | Human |
| Conjugation | Unconjugated |
| Modification | Unmodified |
| Isotype | Mouse IgG1 |
| Clonality | Monoclonal |
| Form | Liquid |
| Concentration | 1mg/ml |
| Storage | Aliquot and store at -20°C (valid for 12 months). Avoid freeze/thaw cycles. |
| Shipping | Ice bags |
| Buffer | Purified antibody in PBS with 0.05% sodium azide |
| Purification | Affinity Purification |

Application

| | |
|-------------------------|---|
| Dilution Ratio | WB 1:500-1:2000,IHC 1:200-1:1000,ELISA 1:5000-1:20000 |
| Molecular Weight | 85.5kDa |

Antigen Information

| | |
|--------------------------|--|
| Gene Name | CD10 |
| Alternative Names | MME; NEP; SFE; CALLA |
| Gene ID | 4311.0 |
| SwissProt ID | P08473 |
| Immunogen | Purified recombinant fragment of human CD10 (AA: 52-246) expressed in E. Coli. |

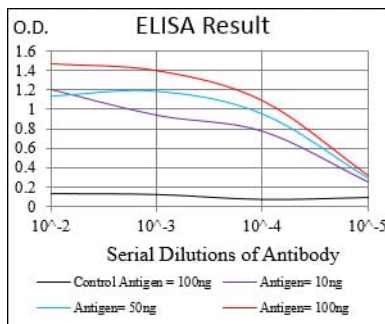
Background

This gene encodes a common acute lymphocytic leukemia antigen that is an important cell surface marker in the diagnosis of human acute lymphocytic leukemia (ALL). This protein is present on leukemic cells of pre-B phenotype, which represent 85% of cases of ALL. This protein is not restricted to leukemic cells, however, and is found on a variety of normal tissues. It is a

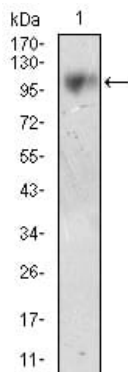
glycoprotein that is particularly abundant in kidney, where it is present on the brush border of proximal tubules and on glomerular epithelium. The protein is a neutral endopeptidase that cleaves peptides at the amino side of hydrophobic residues and inactivates several peptide hormones including glucagon, enkephalins, substance P, neurotensin, oxytocin, and bradykinin. This gene, which encodes a 100-kD type II transmembrane glycoprotein, exists in a single copy of greater than 45 kb. The 5' untranslated region of this gene is alternatively spliced, resulting in four separate mRNA transcripts. The coding region is not affected by alternative splicing.

Research Area

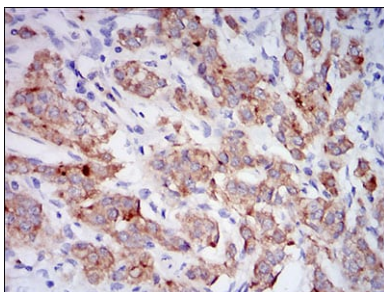
Image Data



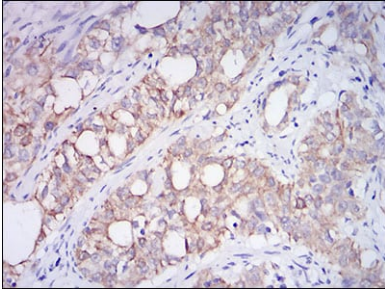
Black line: Control Antigen (100 ng); Purple line: Antigen(10ng); Blue line: Antigen (50 ng); Red line: Antigen (100 ng);



Western blot analysis using CD10 mouse mAb against LNCAP cell lysate.



Immunohistochemical analysis of paraffin-embedded human prostate cancer tissues using CD10 mouse mAb with DAB staining.



Immunohistochemical analysis of paraffin-embedded human cervical cancer tissues using CD10 mouse mAb with DAB staining.