

Product Name: ZEB1 Mouse Monoclonal Antibody**Catalog #: AMM81260**

For research use only.

Summary

Description	Mouse monoclonal Antibody
Host	Mouse
Application	IHC, ICC, ELISA, FC
Reactivity	Human
Conjugation	Unconjugated
Modification	Unmodified
Isotype	Mouse IgG1
Clonality	Monoclonal
Form	Liquid
Concentration	1mg/ml
Storage	Aliquot and store at -20°C (valid for 12 months). Avoid freeze/thaw cycles.
Shipping	Ice bags
Buffer	Purified antibody in PBS with 0.05% sodium azide
Purification	Affinity Purification

Application

Dilution Ratio	IHC 1:200-1:1000, ICC 1:200-1:1000, ELISA 1:5000-1:20000, FC 1:200-1:400
Molecular Weight	124kDa

Antigen Information

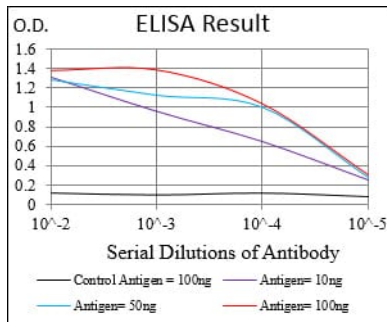
Gene Name	ZEB1
Alternative Names	BZP; TCF8; AREB6; FECD6; NIL2A; PPCD3; ZFHEP; ZFH1A; DELTAEF1
Gene ID	6935.0
SwissProt ID	P37275
Immunogen	Purified recombinant fragment of human ZEB1 (AA: 967-1108) expressed in E. Coli.

Background

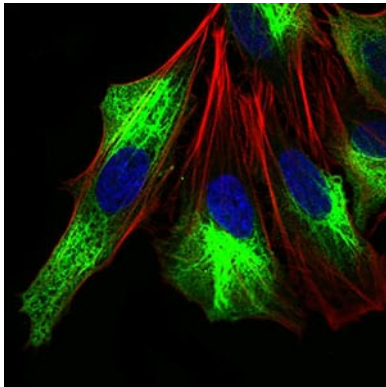
This gene encodes a zinc finger transcription factor. The encoded protein likely plays a role in transcriptional repression of interleukin 2. Mutations in this gene have been associated with posterior polymorphous corneal dystrophy-3 and late-onset Fuchs endothelial corneal dystrophy. Alternatively spliced transcript variants encoding different isoforms have been described.

Research Area

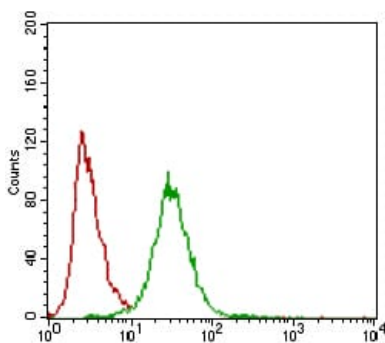
Image Data



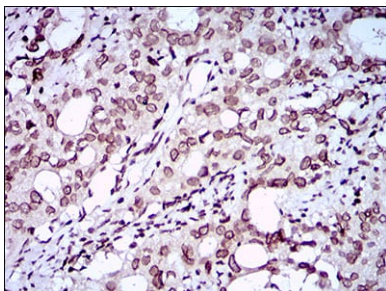
Black line: Control Antigen (100 ng); Purple line: Antigen(10ng); Blue line: Antigen (50 ng); Red line: Antigen (100 ng);



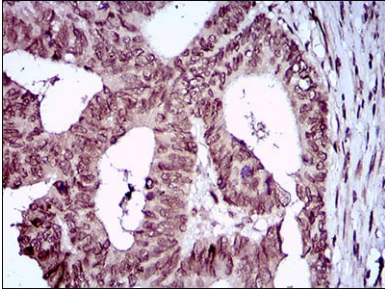
Immunofluorescence analysis of HeLa cells using ZEB1 mouse mAb (green). Blue: DRAQ5 fluorescent DNA dye. Red: Actin filaments have been labeled with Alexa Fluor-555 phalloidin.



Flow cytometric analysis of HeLa cells using ZEB1 mouse mAb (green) and negative control (red).



Immunohistochemical analysis of paraffin-embedded human cervical cancer tissues using ZEB1 mouse mAb with DAB staining.



Immunohistochemical analysis of paraffin-embedded human rectum cancer tissues using ZEB1 mouse mAb with DAB staining.