

Product Name: SLC27A2 Mouse Monoclonal Antibody**Catalog #: AMM81242**

For research use only.

Summary

Description	Mouse monoclonal Antibody
Host	Mouse
Application	IHC,ELISA
Reactivity	Human
Conjugation	Unconjugated
Modification	Unmodified
Isotype	Mouse IgG1
Clonality	Monoclonal
Form	Liquid
Concentration	1mg/ml
Storage	Aliquot and store at -20°C (valid for 12 months). Avoid freeze/thaw cycles.
Shipping	Ice bags
Buffer	Purified antibody in PBS with 0.05% sodium azide
Purification	Affinity Purification

Application

Dilution Ratio	IHC 1:200-1:1000,ELISA 1:5000-1:20000
Molecular Weight	70.3kDa

Antigen Information

Gene Name	SLC27A2
Alternative Names	VLCS; FATP2; VLACS; ACSVL1; FACVL1; hFACVL1; HsT17226
Gene ID	11001.0
SwissProt ID	O14975
Immunogen	Purified recombinant fragment of human SLC27A2 (AA: 346-405) expressed in E. Coli.

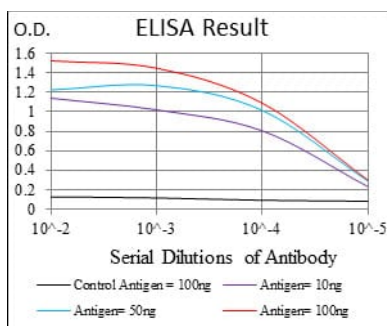
Background

The protein encoded by this gene is an isozyme of long-chain fatty-acid-coenzyme A ligase family. Although differing in substrate specificity, subcellular localization, and tissue distribution, all isozymes of this family convert free long-chain fatty acids into fatty acyl-CoA esters, and thereby play a key role in lipid biosynthesis and fatty acid degradation. This isozyme

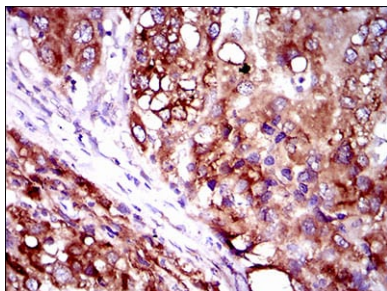
activates long-chain, branched-chain and very-long-chain fatty acids containing 22 or more carbons to their CoA derivatives. It is expressed primarily in liver and kidney, and is present in both endoplasmic reticulum and peroxisomes, but not in mitochondria. Its decreased peroxisomal enzyme activity is in part responsible for the biochemical pathology in X-linked adrenoleukodystrophy. Alternatively spliced transcript variants encoding different isoforms have been found for this gene.

Research Area

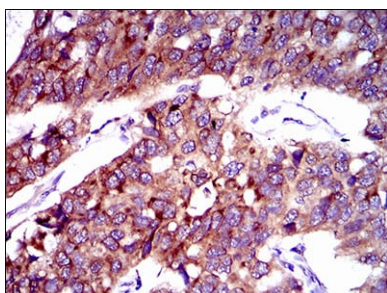
Image Data



Black line: Control Antigen (100 ng); Purple line: Antigen(10ng); Blue line: Antigen (50 ng); Red line: Antigen (100 ng);



Immunohistochemical analysis of paraffin-embedded human liver cancer tissues using SLC27A2 mouse mAb with DAB staining.



Immunohistochemical analysis of paraffin-embedded human esophageal cancer tissues using SLC27A2 mouse mAb with DAB staining.