

## Summary

<b>Production Name</b>	TWIST1 Mouse Monoclonal Antibody
<b>Description</b>	Mouse Monoclonal Antibody
<b>Host</b>	Mouse
<b>Application</b>	WB,IHC,ICC,FC,ELISA
<b>Reactivity</b>	Human,Mouse,Rat,Rabbit

## Performance

<b>Conjugation</b>	Unconjugated
<b>Modification</b>	Unmodified
<b>Isotype</b>	Mouse IgG1
<b>Clonality</b>	Monoclonal
<b>Form</b>	Liquid
<b>Storage</b>	Store at 4°C short term. Aliquot and store at -20°C long term. Avoid freeze/thaw cycles.
<b>Buffer</b>	Purified antibody in PBS with 0.05% sodium azide
<b>Purification</b>	Affinity Purification

## Immunogen

<b>Gene Name</b>	TWIST1
<b>Alternative Names</b>	SCS; ACS3; CRS1; BPES2; BPES3; TWIST; bHLHa38
<b>Gene ID</b>	7291.0
<b>SwissProt ID</b>	Q15672.Purified recombinant fragment of human TWIST1 (AA: 9-74) expressed in E. Coli.

## Application

<b>Dilution Ratio</b>	WB:1:500-1:2000,IHC:1:100-1:500,ICC:1:50-1:500,FC:1:200-1:400,ELISA:1:10000
<b>Molecular Weight</b>	21kDa

## Background

**Product Name: TWIST1 Mouse Monoclonal Antibody**  
**Catalog #: AMM81225**



Basic helix-loop-helix (bHLH) transcription factors have been implicated in cell lineage determination and differentiation. The protein encoded by this gene is a bHLH transcription factor and shares similarity with another bHLH transcription factor, Dermo1. The strongest expression of this mRNA is in placental tissue; in adults, mesodermally derived tissues express this mRNA preferentially. Mutations in this gene have been found in patients with Saethre-Chotzen syndrome.

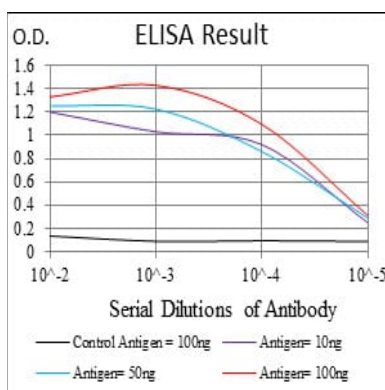
<br />

<br />

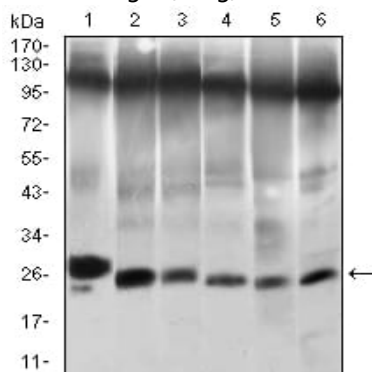
<br />

## Research Area

## Image Data

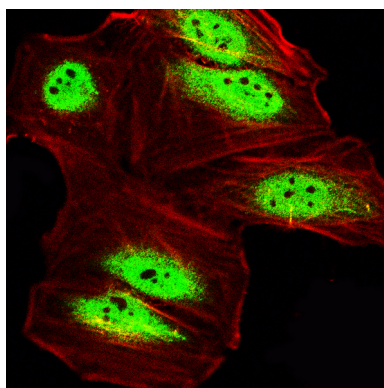


Black line: Control Antigen (100 ng); Purple line: Antigen(10ng); Blue line: Antigen (50 ng); Red line: Antigen (100 ng);

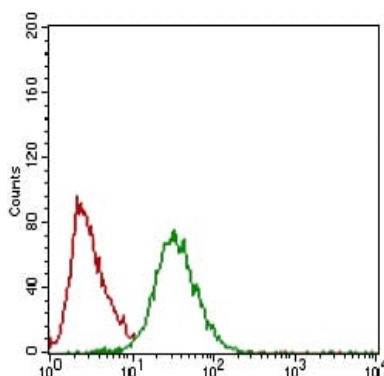


Western blot analysis using TWIST1 mouse mAb against NIH/3T3 (1), JURKAT (2), HELA (3), A549 (4), RAJI (5) and OCM-1 (6) cell lysate.

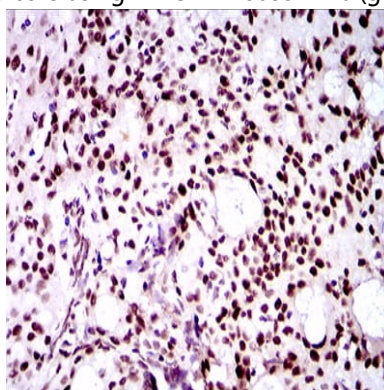
**Product Name: TWIST1 Mouse Monoclonal Antibody**  
**Catalog #: AMM81225**



Immunofluorescence analysis of Hela cells using TWIST1 mouse mAb (green). Blue: DRAQ5 fluorescent DNA dye.

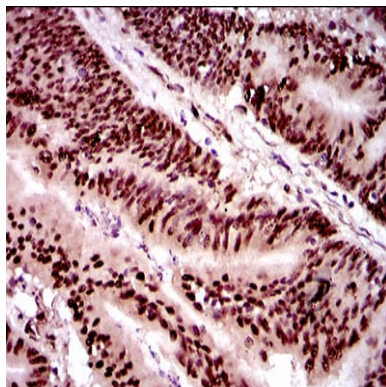


Flow cytometric analysis of Hela cells using TWIST1 mouse mAb (green) and negative control (red).

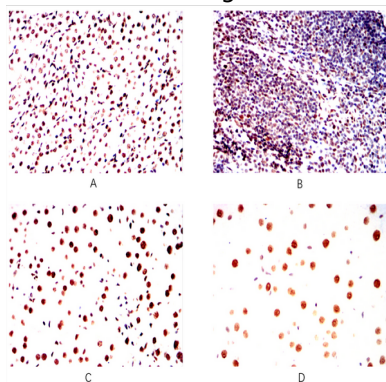


Immunohistochemical analysis of paraffin-embedded human cervical cancer tissues using TWIST1 mouse mAb with DAB staining.

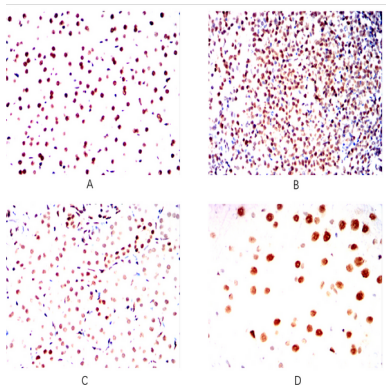
**Product Name: TWIST1 Mouse Monoclonal Antibody**  
**Catalog #: AMM81225**



Immunohistochemical analysis of paraffin-embedded human colon cancer tissues using TWIST1 mouse mAb with DAB staining.

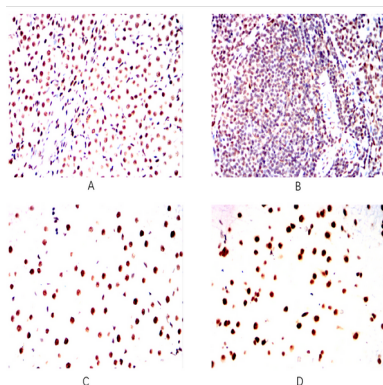


Immunohistochemical analysis of paraffin-embedded Mouse kidney(A)Mouse spleen(B)Mouse liver(C)Mouse brain(D) using TWIST1 mouse mAb with DAB staining.



Immunohistochemical analysis of paraffin-embedded Rat kidney(A)Rat spleen(B)Rat liver(C)Rat brain(D) using TWIST1 mouse mAb with DAB staining.

**Product Name: TWIST1 Mouse Monoclonal Antibody**  
**Catalog #: AMM81225**



Immunohistochemical analysis of paraffin-embedded Rabbit kidney(A)Rabbit spleen(B)Rabbit liver(C)Rabbit brain(D) using TWIST1 mouse mAb with DAB staining.

### **Note**

For research use only.