

Product Name: PSAP Mouse Monoclonal Antibody**Catalog #: AMM81206**

For research use only.

Summary

Description	Mouse monoclonal Antibody
Host	Mouse
Application	IHC, ICC, ELISA, FC
Reactivity	Human
Conjugation	Unconjugated
Modification	Unmodified
Isotype	Mouse IgG1
Clonality	Monoclonal
Form	Liquid
Concentration	1mg/ml
Storage	Aliquot and store at -20°C (valid for 12 months). Avoid freeze/thaw cycles.
Shipping	Ice bags
Buffer	Purified antibody in PBS with 0.05% sodium azide
Purification	Affinity Purification

Application

Dilution Ratio	IHC 1:200-1:1000, ICC 1:50-1:500, ELISA 1:5000-1:20000, FC 1:200-1:400
Molecular Weight	58.1kDa

Antigen Information

Gene Name	PSAP
Alternative Names	GLBA; SAP1
Gene ID	5660.0
SwissProt ID	P07602
Immunogen	Purified recombinant fragment of human PSAP (AA: 325-524) expressed in E. Coli.

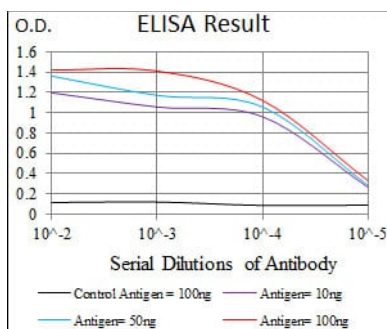
Background

This gene encodes a highly conserved glycoprotein which is a precursor for 4 cleavage products: saposins A, B, C, and D. Each domain of the precursor protein is approximately 80 amino acid residues long with nearly identical placement of cysteine residues and glycosylation sites. Saposins A-D localize primarily to the lysosomal compartment where they facilitate the

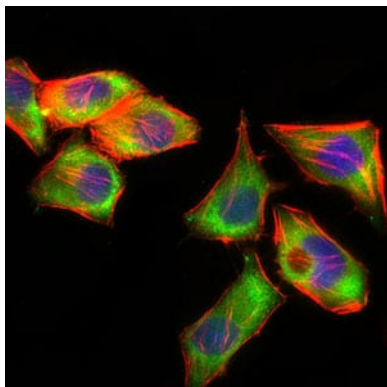
catabolism of glycosphingolipids with short oligosaccharide groups. The precursor protein exists both as a secretory protein and as an integral membrane protein and has neurotrophic activities. Mutations in this gene have been associated with Gaucher disease, Tay-Sachs disease, and metachromatic leukodystrophy. Alternative splicing results in multiple transcript variants encoding different isoforms.

Research Area

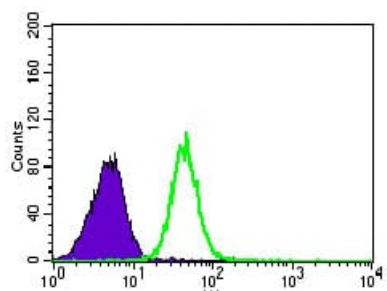
Image Data



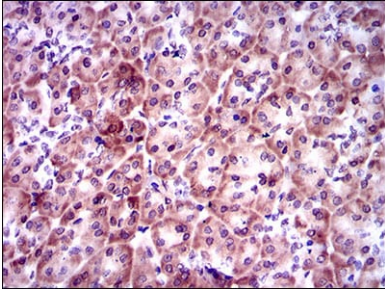
Black line: Control Antigen (100 ng); Purple line: Antigen(10ng); Blue line: Antigen (50 ng); Red line: Antigen (100 ng);



Immunofluorescence analysis of HepG2 cells using PSAP mouse mAb (green). Blue: DRAQ5 fluorescent DNA dye. Red: Actin filaments have been labeled with Alexa Fluor-555 phalloidin.



Flow cytometric analysis of HeLa cells using PSAP mouse mAb (green) and negative control (purple).



immunohistochemical analysis of paraffin-embedded human pancreas tissues using PSAP mouse mAb with DAB staining.