

**Product Name: ENO2 Mouse Monoclonal Antibody****Catalog #: AMM81160**

For research use only.

**Summary**

<b>Description</b>	Mouse monoclonal Antibody
<b>Host</b>	Mouse
<b>Application</b>	WB,IHC,ELISA,FC
<b>Reactivity</b>	Human,Mouse
<b>Conjugation</b>	Unconjugated
<b>Modification</b>	Unmodified
<b>Isotype</b>	Mouse IgG1
<b>Clonality</b>	Monoclonal
<b>Form</b>	Liquid
<b>Concentration</b>	1mg/ml
<b>Storage</b>	Aliquot and store at -20°C (valid for 12 months). Avoid freeze/thaw cycles.
<b>Shipping</b>	Ice bags
<b>Buffer</b>	Purified antibody in PBS with 0.05% sodium azide
<b>Purification</b>	Affinity Purification

**Application**

<b>Dilution Ratio</b>	WB 1:500-1:2000,IHC 1:200-1:1000,ELISA 1:5000-1:20000,FC 1:200-1:400
<b>Molecular Weight</b>	47.3kDa

**Antigen Information**

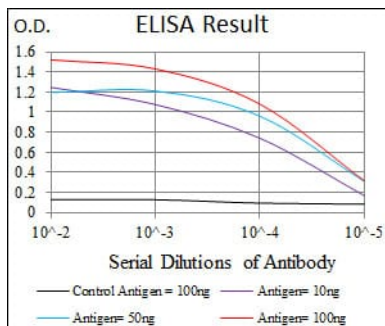
<b>Gene Name</b>	ENO2
<b>Alternative Names</b>	NSE
<b>Gene ID</b>	2026.0
<b>SwissProt ID</b>	P09104
<b>Immunogen</b>	Purified recombinant fragment of human ENO2 (AA: 251-433) expressed in E. Coli.

**Background**

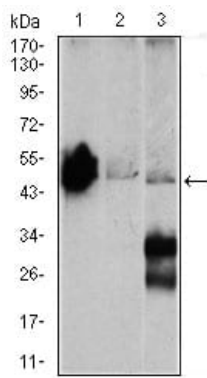
This gene encodes one of the three enolase isoenzymes found in mammals. This isoenzyme, a homodimer, is found in mature neurons and cells of neuronal origin. A switch from alpha enolase to gamma enolase occurs in neural tissue during development in rats and primates.

## Research Area

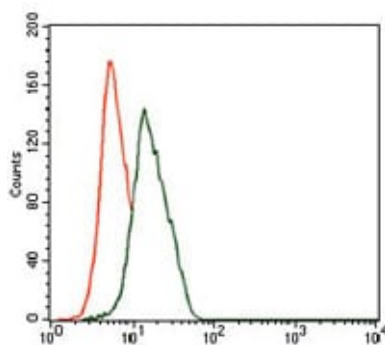
## Image Data



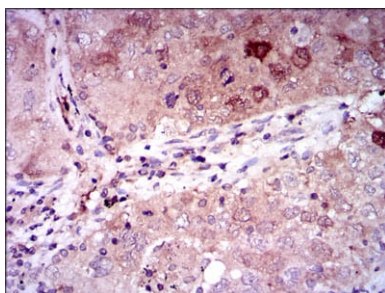
Black line: Control Antigen (100 ng); Purple line: Antigen(10ng); Blue line: Antigen (50 ng); Red line: Antigen (100 ng);



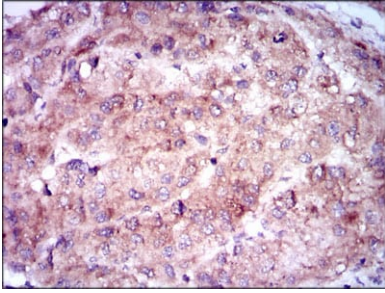
Western blot analysis using ENO2 mouse mAb against Mouse brain (1), NIH3T3 (2), and C6 (3) cell lysate.



Flow cytometric analysis of HeLa cells using ENO2 mouse mAb (green) and negative control (red).



Immunohistochemical analysis of paraffin-embedded human lung cancer tissues using ENO2 mouse mAb with DAB staining.



Immunohistochemical analysis of paraffin-embedded human liver cancer tissues using ENO2 mouse mAb with DAB staining.