
Product Name: MAP2 Mouse Monoclonal Antibody**Catalog #: AMM81144**

For research use only.

Summary

Description	Mouse monoclonal Antibody
Host	Mouse
Application	ELISA,FC
Reactivity	Human
Conjugation	Unconjugated
Modification	Unmodified
Isotype	Mouse IgG1
Clonality	Monoclonal
Form	Liquid
Concentration	1mg/ml
Storage	Aliquot and store at -20°C (valid for 12 months). Avoid freeze/thaw cycles.
Shipping	Ice bags
Buffer	Purified antibody in PBS with 0.05% sodium azide
Purification	Affinity Purification

Application

Dilution Ratio	ELISA 1:5000-1:20000,FC 1:200-1:400
Molecular Weight	199kDa

Antigen Information

Gene Name	MAP2
Alternative Names	MAP2A; MAP2B; MAP2C
Gene ID	4133.0
SwissProt ID	P11137
Immunogen	Purified recombinant fragment of human MAP2 (AA: 24-123) expressed in E. Coli.

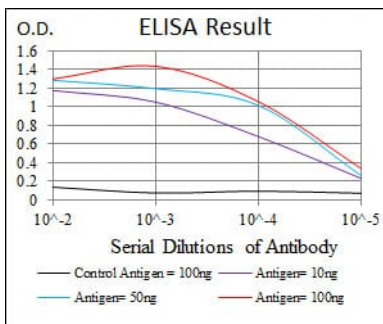
Background

This gene encodes a protein that belongs to the microtubule-associated protein family. The proteins of this family are thought to be involved in microtubule assembly, which is an essential step in neurogenesis. The products of similar genes in rat and mouse are neuron-specific cytoskeletal proteins that are enriched in dendrites, implicating a role in determining and stabilizing

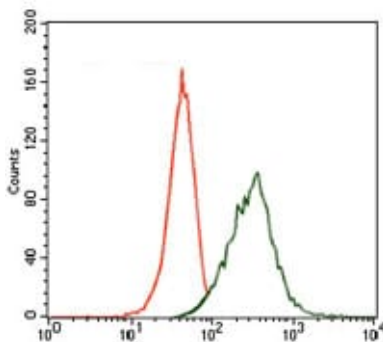
dendritic shape during neuron development. A number of alternatively spliced variants encoding distinct isoforms have been described.

Research Area

Image Data



Black line: Control Antigen (100 ng); Purple line: Antigen(10ng); Blue line: Antigen (50 ng); Red line: Antigen (100 ng);



Flow cytometric analysis of HeLa cells using MAP2 mouse mAb (green) and negative control (red).