

Product Name: mouse Lplunc1 Mouse Monoclonal Antibody**Catalog #:** AMM81131

For research use only.

Summary

Description	Mouse monoclonal Antibody
Host	Mouse
Application	IHC, ICC, ELISA, FC
Reactivity	Human
Conjugation	Unconjugated
Modification	Unmodified
Isotype	Mouse IgG1
Clonality	Monoclonal
Form	Liquid
Concentration	1mg/ml
Storage	Aliquot and store at -20°C (valid for 12 months). Avoid freeze/thaw cycles.
Shipping	Ice bags
Buffer	Purified antibody in PBS with 0.05% sodium azide
Purification	Affinity Purification

Application

Dilution Ratio	IHC 1:200-1:1000, ICC 1:200-1:1000, ELISA 1:5000-1:20000, FC 1:200-1:400
Molecular Weight	52.4kDa

Antigen Information

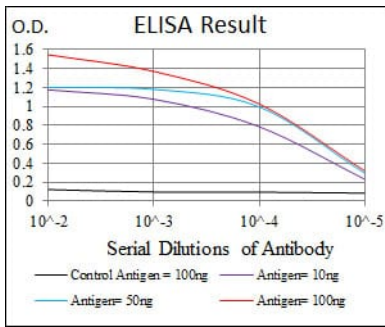
Gene Name	Lplunc1
Alternative Names	Bpifb1; RP23-154J12.1
Gene ID	228801.0
SwissProt ID	Q61114
Immunogen	Purified recombinant fragment of mouse Lplunc1 expressed in E. Coli.

Background

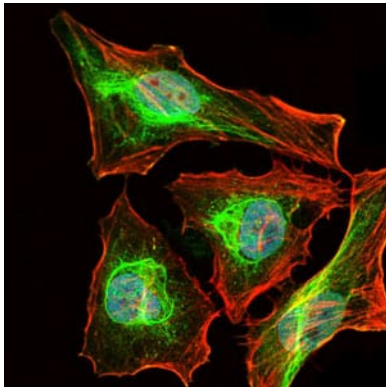
Palate, lung, and nasal epithelium clone (Plunc, now renamed Splunc1) is a small secreted protein expressed in the oropharynx and upper airways of humans, mice, rats, and cows. This protein is structurally homologous to known mediators of host defense against gram-negative bacteria.

Research Area

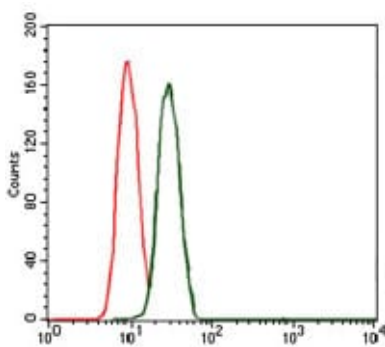
Image Data



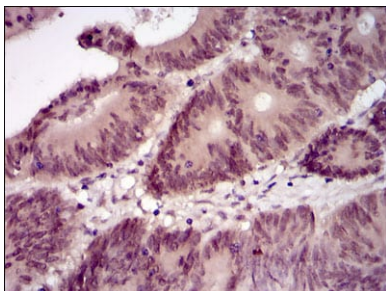
Black line: Control Antigen (100 ng); Purple line: Antigen(10ng); Blue line: Antigen (50 ng); Red line: Antigen (100 ng);



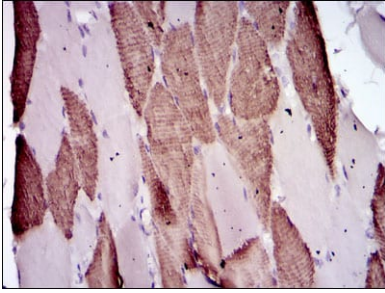
Immunofluorescence analysis of HeLa cells using Lplunc1 mouse mAb (green). Blue: DRAQ5 fluorescent DNA dye. Red: Actin filaments have been labeled with Alexa Fluor-555 phalloidin.



Flow cytometric analysis of MCF-7 cells using Lplunc1 mouse mAb (green) and negative control (red).



Immunohistochemical analysis of paraffin-embedded human colon cancer tissues using Lplunc1 mouse mAb with DAB staining.



Immunohistochemical analysis of paraffin-embedded human muscle tissues using Lplunc1 mouse mAb with DAB staining.