

Product Name: CK5 Mouse Monoclonal Antibody
Catalog #: AMM81116



Summary

Production Name	CK5 Mouse Monoclonal Antibody
Description	Mouse Monoclonal Antibody
Host	Mouse
Application	WB,IHC,ICC,FC,ELISA
Reactivity	Human,Mouse,Rat,Rabbit,Monkey

Performance

Conjugation	Unconjugated
Modification	Unmodified
Isotype	Mouse IgG1
Clonality	Monoclonal
Form	Liquid
Storage	Store at 4°C short term. Aliquot and store at -20°C long term. Avoid freeze/thaw cycles.
Buffer	Purified antibody in PBS with 0.05% sodium azide
Purification	Affinity Purification

Immunogen

Gene Name	CK5
Alternative Names	KRT5; K5; DDD; EBS2; KRT5A
Gene ID	3852.0
SwissProt ID	P13647.Purified recombinant fragment of human CK5 expressed in E. Coli.

Application

Dilution Ratio	WB:1:500-1:2000,IHC:1:100-1:500,ICC:1:50-1:500,FC:1:200-1:400,ELISA:1:10000
Molecular Weight	62.3kDa

Background

The protein encoded by this gene is a member of the keratin gene family. The type II cytokeratins consist of basic or

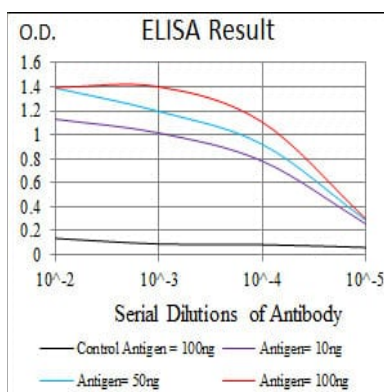
Product Name: CK5 Mouse Monoclonal Antibody
Catalog #: AMM81116



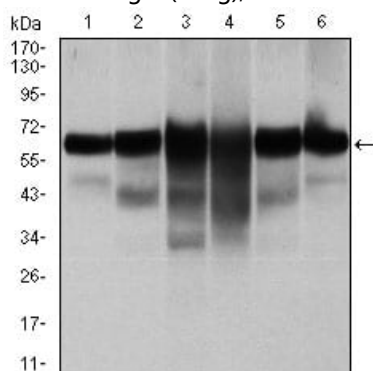
neutral proteins which are arranged in pairs of heterotypic keratin chains coexpressed during differentiation of simple and stratified epithelial tissues. This type II cytokeratin is specifically expressed in the basal layer of the epidermis with family member KRT14. Mutations in these genes have been associated with a complex of diseases termed epidermolysis bullosa simplex. The type II cytokeratins are clustered in a region of chromosome 12q12-q13.

Research Area

Image Data

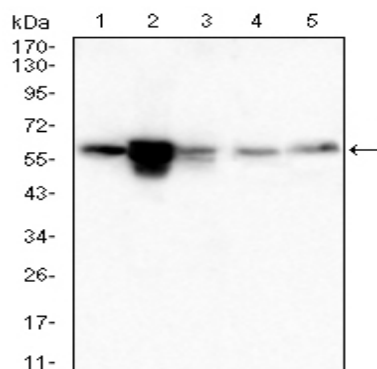


Black line: Control Antigen (100 ng); Purple line: Antigen(10ng); Blue line: Antigen (50 ng); Red line: Antigen (100 ng);

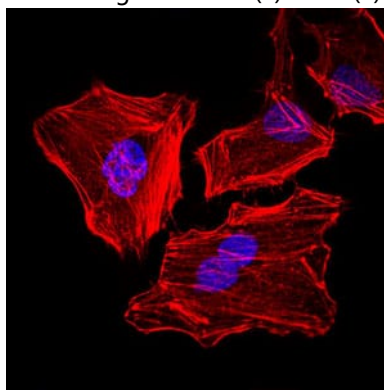


Western blot analysis using CK5 mouse mAb against A431 (1), MCF-7 (2), HeLa (3), HepG2 (4), 3T3-L1 (5), and COS-7 (6) cell lysate.

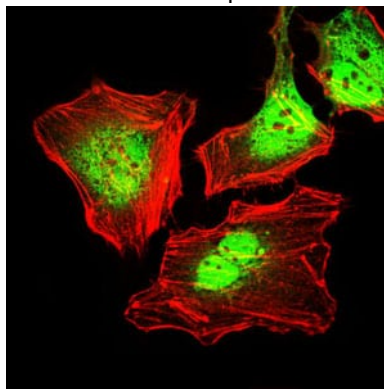
Product Name: CK5 Mouse Monoclonal Antibody
Catalog #: AMM81116



Western blot analysis using CK5 mouse mAb against PC-12(1)C2C12(2)C6(3)L1210(4)CHO3D10(5)cell lysate.

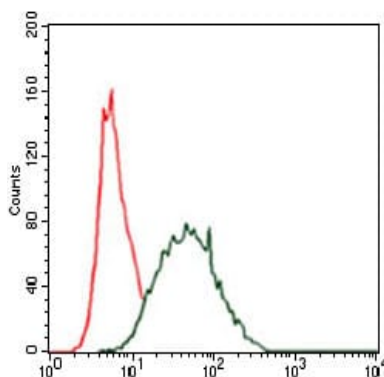


Immunofluorescence analysis of HeLa cells. Blue: DRAQ5 fluorescent DNA dye. Red: Actin filaments have been labeled with Alexa Fluor-555 phalloidin.

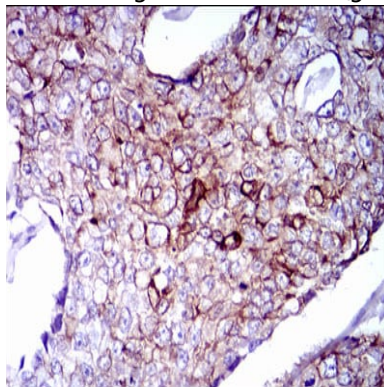


Immunofluorescence analysis of HeLa cells using CK5 mouse mAb (green). Red: Actin filaments have been labeled with Alexa Fluor-555 phalloidin.

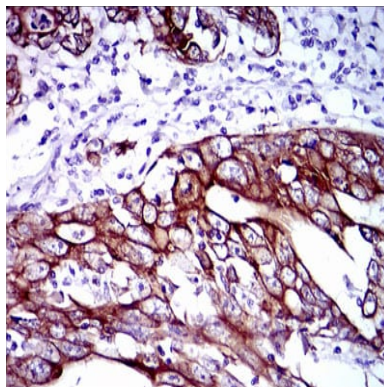
Product Name: CK5 Mouse Monoclonal Antibody
Catalog #: AMM81116



Flow cytometric analysis of HeLa cells using CK5 mouse mAb (green) and negative control (red).

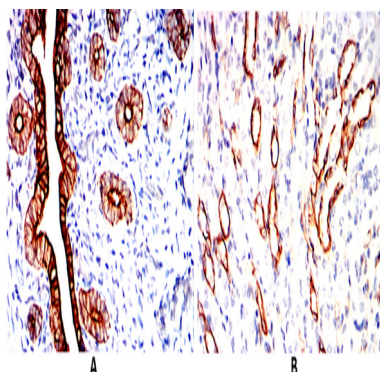


Immunohistochemical analysis of paraffin-embedded human breast cancer tissues using CK5 mouse mAb with DAB staining.



Immunohistochemical analysis of paraffin-embedded human stomach cancer tissues using CK5 mouse mAb with DAB staining.

Product Name: CK5 Mouse Monoclonal Antibody
Catalog #: AMM81116



Immunohistochemical analysis of paraffin-embedded Mouse colon(A) Mouse kidney(B) using CK5 mouse mAb with DAB staining.

Note

For research use only.