

**Product Name: CRP Mouse Monoclonal Antibody****Catalog #: AMM81102**

For research use only.

**Summary**

<b>Description</b>	Mouse monoclonal Antibody
<b>Host</b>	Mouse
<b>Application</b>	IHC,ELISA,FC
<b>Reactivity</b>	Human
<b>Conjugation</b>	Unconjugated
<b>Modification</b>	Unmodified
<b>Isotype</b>	Mouse IgG1
<b>Clonality</b>	Monoclonal
<b>Form</b>	Liquid
<b>Concentration</b>	1mg/ml
<b>Storage</b>	Aliquot and store at -20°C (valid for 12 months). Avoid freeze/thaw cycles.
<b>Shipping</b>	Ice bags
<b>Buffer</b>	PBS containing 0.03% sodium azide.
<b>Purification</b>	Affinity Purification

**Application**

<b>Dilution Ratio</b>	IHC 1:200-1:1000,ELISA 1:5000-1:20000,FC 1:200-1:400
<b>Molecular Weight</b>	25kDa

**Antigen Information**

<b>Gene Name</b>	CRP
<b>Alternative Names</b>	PTX1
<b>Gene ID</b>	1401.0
<b>SwissProt ID</b>	P02741
<b>Immunogen</b>	Purified recombinant fragment of human CRP expressed in E. Coli.

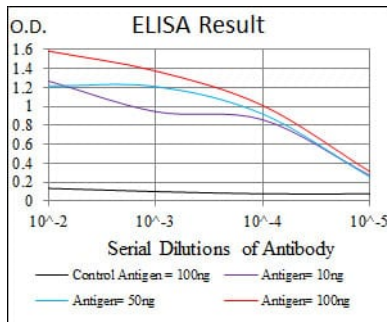
**Background**

The protein encoded by this gene belongs to the pentaxin family. It is involved in several host defense related functions based on its ability to recognize foreign pathogens and damaged cells of the host and to initiate their elimination by interacting with humoral and cellular effector systems in the blood. Consequently, the level of this protein in plasma increases greatly during

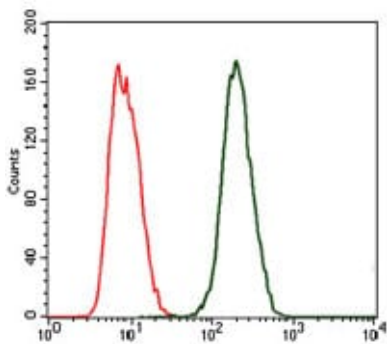
acute phase response to tissue injury, infection, or other inflammatory stimuli.

## Research Area

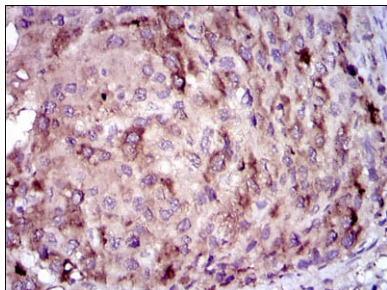
### Image Data



Black line: Control Antigen (100 ng); Purple line: Antigen(10ng); Blue line: Antigen (50 ng); Red line: Antigen (100 ng);



Flow cytometric analysis of MCF-7 cells using CRP mouse mAb (green) and negative control (red).



Immunohistochemical analysis of paraffin-embedded human liver cancer tissues using CRP mouse mAb with DAB staining.