
Product Name: RAF1 Mouse Monoclonal Antibody**Catalog #: AMM81098**

For research use only.

Summary

Description	Mouse monoclonal Antibody
Host	Mouse
Application	WB,IHC,ELISA,FC
Reactivity	Human
Conjugation	Unconjugated
Modification	Unmodified
Isotype	Mouse IgG1
Clonality	Monoclonal
Form	Liquid
Concentration	1mg/ml
Storage	Aliquot and store at -20°C (valid for 12 months). Avoid freeze/thaw cycles.
Shipping	Ice bags
Buffer	Purified antibody in PBS with 0.05% sodium azide
Purification	Affinity Purification

Application

Dilution Ratio	WB 1:500-1:2000,IHC 1:200-1:1000,ELISA 1:5000-1:20000,FC 1:200-1:400
Molecular Weight	73kDa

Antigen Information

Gene Name	RAF1
Alternative Names	NS5; CRAF; Raf-1; c-Raf
Gene ID	5894.0
SwissProt ID	P04049
Immunogen	Purified recombinant fragment of human RAF1 expressed in E. Coli.

Background

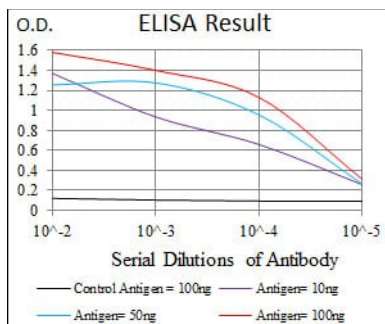
This gene is the cellular homolog of viral raf gene (v-raf). The encoded protein is a MAP kinase kinase kinase (MAP3K), which functions downstream of the Ras family of membrane associated GTPases to which it binds directly. Once activated, the cellular RAF1 protein can phosphorylate to activate the dual specificity protein kinases MEK1 and MEK2, which in turn phosphorylate to

activate the serine/threonine specific protein kinases, ERK1 and ERK2. Activated ERKs are pleiotropic effectors of cell physiology and play an important role in the control of gene expression involved in the cell division cycle, apoptosis, cell differentiation and cell migration. Mutations in this gene are associated with Noonan syndrome 5 and LEOPARD syndrome 2.

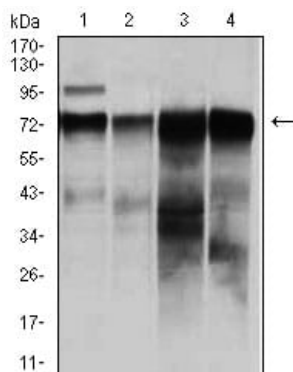
Research Area

PI3K-Akt signaling pathway, mTOR signaling pathway, MAPK signaling pathway, Jak-STAT signaling pathway

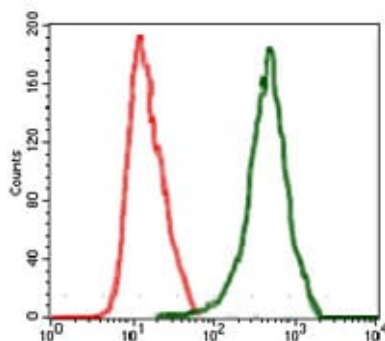
Image Data



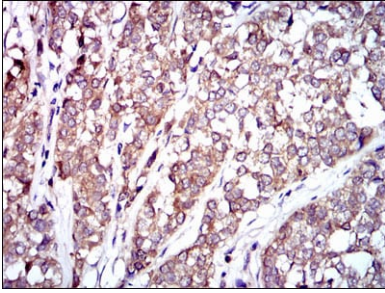
Black line: Control Antigen (100 ng); Purple line: Antigen(10ng); Blue line: Antigen (50 ng); Red line: Antigen (100 ng);



Western blot analysis using RAF1 mouse mAb against HeLa (1), A431 (2), HepG (3), and SW620 (4) cell lysate.



Flow cytometric analysis of MCF-7 cells using RAF1 mouse mAb (green) and negative control (red).



Immunohistochemical analysis of paraffin-embedded human bladder cancer tissues using RAF1 mouse mAb with DAB staining.