

Product Name: SERPINE1 Mouse Monoclonal Antibody**Catalog #: AMM81074**

For research use only.

Summary

Description	Mouse monoclonal Antibody
Host	Mouse
Application	IHC,ELISA,FC
Reactivity	Human,Mouse,Rat,Rabbit
Conjugation	Unconjugated
Modification	Unmodified
Isotype	Mouse IgG1
Clonality	Monoclonal
Form	Liquid
Concentration	1mg/ml
Storage	Aliquot and store at -20°C (valid for 12 months). Avoid freeze/thaw cycles.
Shipping	Ice bags
Buffer	Purified antibody in PBS with 0.05% sodium azide
Purification	Affinity Purification

Application

Dilution Ratio	IHC 1:200-1:1000,ELISA 1:5000-1:20000,FC 1:200-1:400
Molecular Weight	45kDa

Antigen Information

Gene Name	SERPINE1
Alternative Names	PAI; PAI1; PAI-1; PLANH1
Gene ID	5054.0
SwissProt ID	P05121
Immunogen	Purified recombinant fragment of human SERPINE1 expressed in E. Coli.

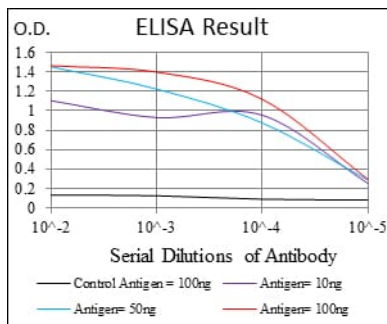
Background

This gene encodes a member of the serine proteinase inhibitor (serpin) superfamily. This member is the principal inhibitor of tissue plasminogen activator (tPA) and urokinase (uPA), and hence is an inhibitor of fibrinolysis. Defects in this gene are the cause of plasminogen activator inhibitor-1 deficiency (PAI-1 deficiency), and high concentrations of the gene product are

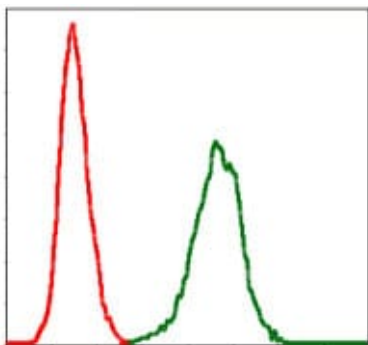
associated with thrombophilia. Alternatively spliced transcript variants encoding different isoforms have been found for this gene.

Research Area

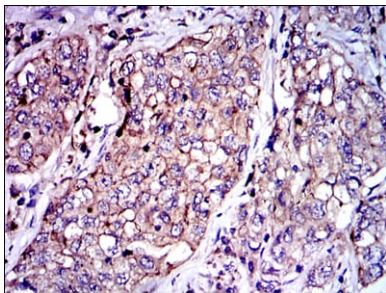
Image Data



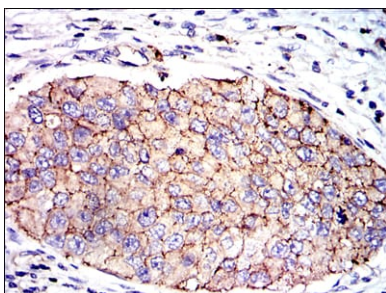
Black line: Control Antigen (100 ng); Purple line: Antigen(10ng); Blue line: Antigen (50 ng); Red line: Antigen (100 ng);



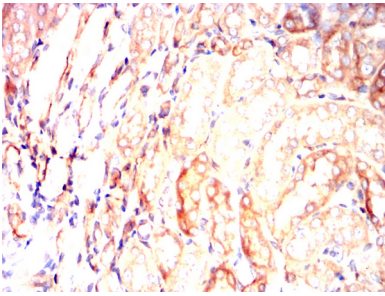
Flow cytometric analysis of NIH/3T3 cells using SERPINE1 mouse mAb (green) and negative control (red).



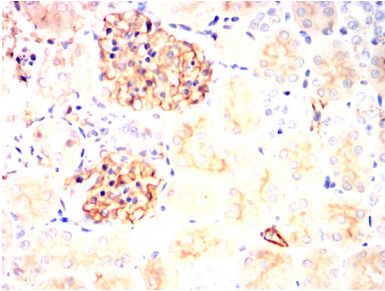
Immunohistochemical analysis of paraffin-embedded human lung cancer tissues using SERPINE1 mouse mAb with DAB staining.



Immunohistochemical analysis of paraffin-embedded human kidney cancer tissues using SERPINE1 mouse mAb with DAB staining.



Immunohistochemical analysis of paraffin-embedded Rat kidney using SERPINE1 mouse mAb with DAB staining.



Immunohistochemical analysis of paraffin-embedded Rabbit kidney using SERPINE1 mouse mAb with DAB staining.