
Product Name: LPlunc1 Mouse Monoclonal Antibody**Catalog #: AMM81071**

For research use only.

Summary

Description	Mouse monoclonal Antibody
Host	Mouse
Application	IHC,ICC,ELISA,FC
Reactivity	Human
Conjugation	Unconjugated
Modification	Unmodified
Isotype	Mouse IgG1
Clonality	Monoclonal
Form	Liquid
Concentration	1mg/ml
Storage	Aliquot and store at -20°C (valid for 12 months). Avoid freeze/thaw cycles.
Shipping	Ice bags
Buffer	Purified antibody in PBS with 0.05% sodium azide
Purification	Affinity Purification

Application

Dilution Ratio	IHC 1:200-1:1000,ICC 1:200-1:1000,ELISA 1:5000-1:20000,FC 1:200-1:400
Molecular Weight	52kDa

Antigen Information

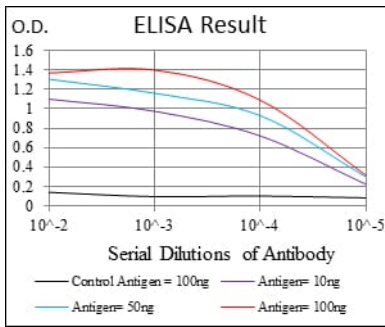
Gene Name	LPlunc1
Alternative Names	BPIFB1; LPLUNC1; MGC14597; C20orf114
Gene ID	92747.0
SwissProt ID	Q8TDL5
Immunogen	Purified recombinant fragment of human LPlunc1 expressed in E. Coli.

Background

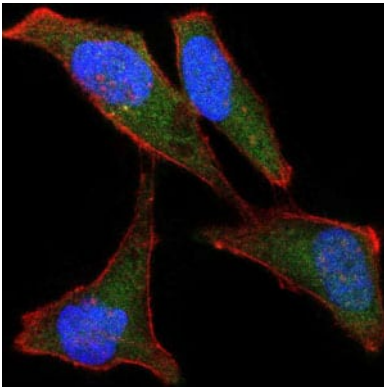
The protein encoded by this gene may be involved in the innate immune response to bacterial exposure in the mouth, nasal cavities, and lungs. The encoded protein is secreted and is a member of the BPI/LBP/PLUNC protein superfamily. This gene is found with other members of the superfamily in a cluster on chromosome 20.

Research Area

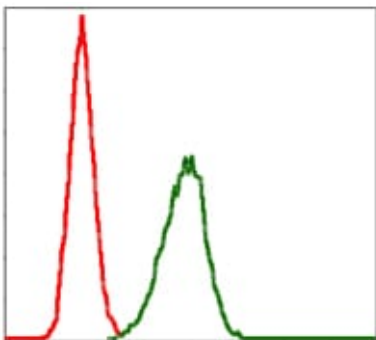
Image Data



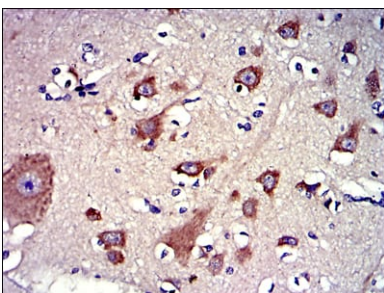
Black line: Control Antigen (100 ng); Purple line: Antigen(10ng); Blue line: Antigen (50 ng); Red line: Antigen (100 ng);



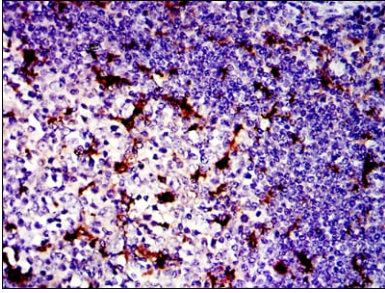
Immunofluorescence analysis of HeLa cells using LPLunc1 mouse mAb (green). Blue: DRAQ5 fluorescent DNA dye. Red: Actin filaments have been labeled with Alexa Fluor-555 phalloidin.



Flow cytometric analysis of HeLa cells using LPLunc1 mouse mAb (green) and negative control (red).



Immunohistochemical analysis of paraffin-embedded human brain tissues using LPLunc1 mouse mAb with DAB staining.



Immunohistochemical analysis of paraffin-embedded human tonsil tissues using LPlunc1 mouse mAb with DAB staining.