
Product Name: TUBA8 Mouse Monoclonal Antibody**Catalog #: AMM81070**

For research use only.

Summary

Description	Mouse monoclonal Antibody
Host	Mouse
Application	WB,IHC,ICC,ELISA,FC
Reactivity	Human,Rat
Conjugation	Unconjugated
Modification	Unmodified
Isotype	Mouse IgG2b
Clonality	Monoclonal
Form	Liquid
Concentration	1mg/ml
Storage	Aliquot and store at -20°C (valid for 12 months). Avoid freeze/thaw cycles.
Shipping	Ice bags
Buffer	PBS containing 0.03% sodium azide.
Purification	Affinity Purification

Application

Dilution Ratio	WB 1:500-1:2000,IHC 1:200-1:1000,ICC 1:200-1:1000,ELISA 1:5000-1:20000,FC 1:200-1:400
Molecular Weight	50kDa

Antigen Information

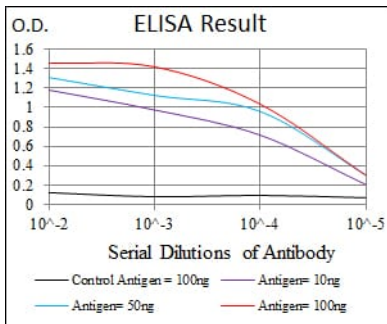
Gene Name	TUBA8
Alternative Names	TUBAL2
Gene ID	51807.0
SwissProt ID	Q9NY65
Immunogen	Purified recombinant fragment of human TUBA8 expressed in E. Coli.

Background

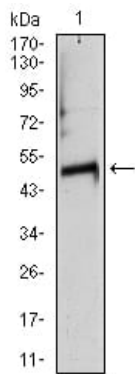
This gene encodes a member of the alpha tubulin protein family. Alpha tubulins are one of two core protein families (alpha and beta tubulins) that heterodimerize and assemble to form microtubules. Mutations in this gene are associated with polymicrogyria and optic nerve hypoplasia. Alternate splicing results in multiple transcript variants.

Research Area

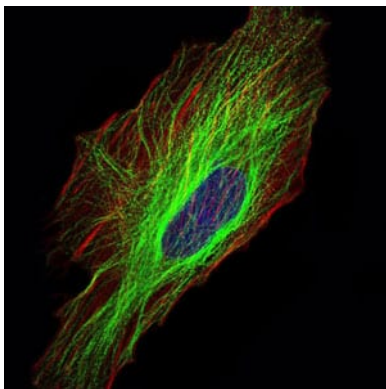
Image Data



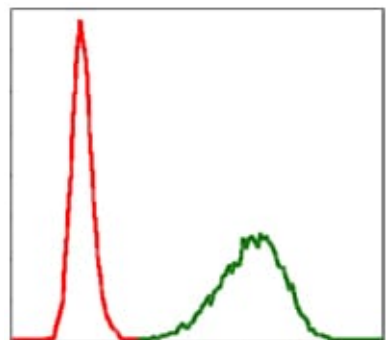
Black line: Control Antigen (100 ng); Purple line: Antigen(10ng); Blue line: Antigen (50 ng); Red line: Antigen (100 ng);



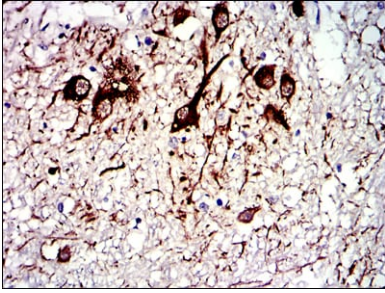
Western blot analysis using TUBA8 mouse mAb against rat heart (1) tissue lysate.



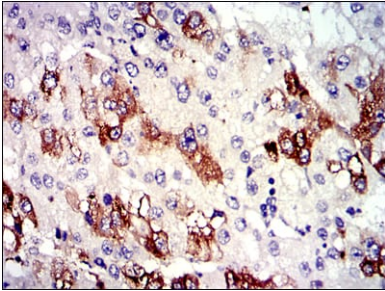
Immunofluorescence analysis of HeLa cells using TUBA8 mouse mAb (green). Blue: DRAQ5 fluorescent DNA dye. Red: Actin filaments have been labeled with Alexa Fluor-555 phalloidin.



Flow cytometric analysis of NIH/3T3 cells using TUBA8 mouse mAb (green) and negative control (red).



Immunohistochemical analysis of paraffin-embedded human medulla oblongata tissues using TUBA8 mouse mAb with DAB staining.



Immunohistochemical analysis of paraffin-embedded human liver cancer tissues using TUBA8 mouse mAb with DAB staining.