
Product Name: G6PD Mouse Monoclonal Antibody**Catalog #: AMM81056**

For research use only.

Summary

Description	Mouse monoclonal Antibody
Host	Mouse
Application	WB,IHC,ELISA,FC
Reactivity	Human
Conjugation	Unconjugated
Modification	Unmodified
Isotype	Mouse IgG1
Clonality	Monoclonal
Form	Liquid
Concentration	1mg/ml
Storage	Aliquot and store at -20°C (valid for 12 months). Avoid freeze/thaw cycles.
Shipping	Ice bags
Buffer	Purified antibody in PBS with 0.05% sodium azide.
Purification	Affinity Purification

Application

Dilution Ratio	WB 1:500-1:2000,IHC 1:200-1:1000,ELISA 1:5000-1:20000,FC 1:200-1:400
Molecular Weight	59kDa

Antigen Information

Gene Name	G6PD
Alternative Names	G6PD1
Gene ID	2539.0
SwissProt ID	P11413
Immunogen	Purified recombinant fragment of human G6PD expressed in E. Coli.

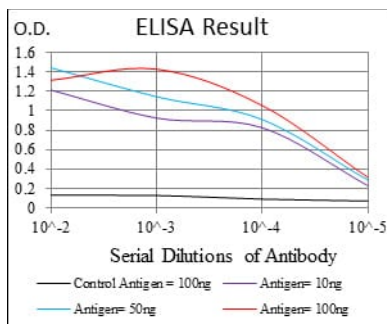
Background

This gene encodes glucose-6-phosphate dehydrogenase. This protein is a cytosolic enzyme encoded by a housekeeping X-linked gene whose main function is to produce NADPH, a key electron donor in the defense against oxidizing agents and in reductive biosynthetic reactions. G6PD is remarkable for its genetic diversity. Many variants of G6PD, mostly produced from

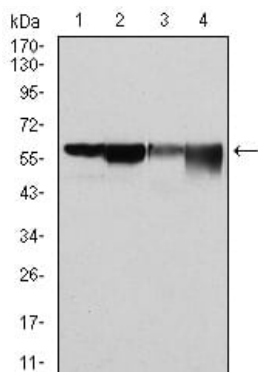
missense mutations, have been described with wide ranging levels of enzyme activity and associated clinical symptoms. G6PD deficiency may cause neonatal jaundice, acute hemolysis, or severe chronic non-spherocytic hemolytic anemia. Two transcript variants encoding different isoforms have been found for this gene.

Research Area

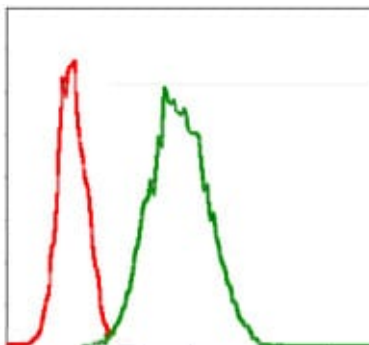
Image Data



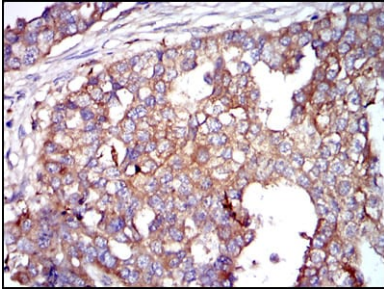
Black line: Control Antigen (100 ng); Purple line: Antigen(10ng); Blue line: Antigen (50 ng); Red line: Antigen (100 ng);



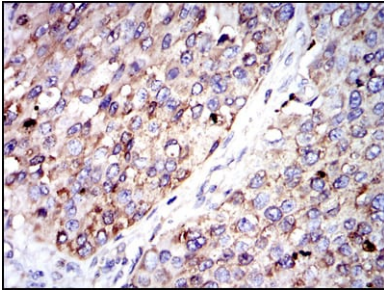
Western blot analysis using G6PD mouse mAb against HeLa (1), MCF-7 (2), Jurkat (3) and K562 (4) cell lysate.



Flow cytometric analysis of Jurkat cells using G6PD mouse mAb (green) and negative control (red).



Immunohistochemical analysis of paraffin-embedded human breast cancer tissues using G6PD mouse mAb with DAB staining.



Immunohistochemical analysis of paraffin-embedded human kidney cancer tissues using G6PD mouse mAb with DAB staining.