

Summary

Production Name	G6PD Mouse Monoclonal Antibody
Description	Mouse Monoclonal Antibody
Host	Mouse
Application	WB,IHC,FC,ELISA
Reactivity	Human,Mouse,Rabbit

Performance

Conjugation	Unconjugated
Modification	Unmodified
Isotype	Mouse IgG1
Clonality	Monoclonal
Form	Liquid
Storage	Store at 4°C short term. Aliquot and store at -20°C long term. Avoid freeze/thaw cycles.
Buffer	Purified antibody in PBS with 0.05% sodium azide.
Purification	Affinity Purification

Immunogen

Gene Name	G6PD
Alternative Names	G6PD1
Gene ID	2539.0
SwissProt ID	P11413.Purified recombinant fragment of human G6PD expressed in E. Coli.

Application

Dilution Ratio	WB:1:500-1:2000,IHC:1:100-1:500,FC:1:200-1:400,ELISA:1:10000
Molecular Weight	59kDa

Background

This gene encodes glucose-6-phosphate dehydrogenase. This protein is a cytosolic enzyme encoded by a housekeeping X-

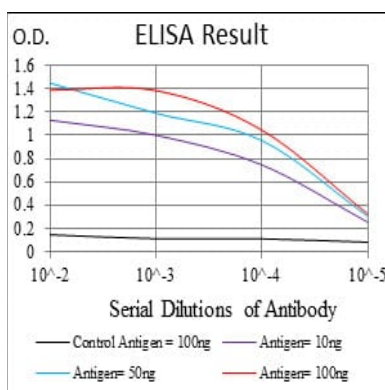
Product Name: G6PD Mouse Monoclonal Antibody
Catalog #: AMM81053



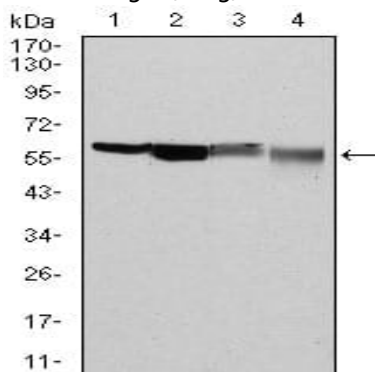
linked gene whose main function is to produce NADPH, a key electron donor in the defense against oxidizing agents and in reductive biosynthetic reactions. G6PD is remarkable for its genetic diversity. Many variants of G6PD, mostly produced from missense mutations, have been described with wide ranging levels of enzyme activity and associated clinical symptoms. G6PD deficiency may cause neonatal jaundice, acute hemolysis, or severe chronic non-spherocytic hemolytic anemia. Two transcript variants encoding different isoforms have been found for this gene.

Research Area

Image Data

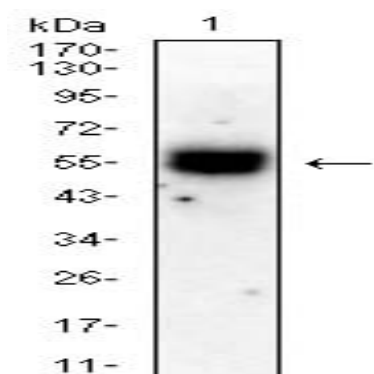


Black line: Control Antigen (100 ng); Purple line: Antigen(10ng); Blue line: Antigen (50 ng); Red line: Antigen (100 ng);

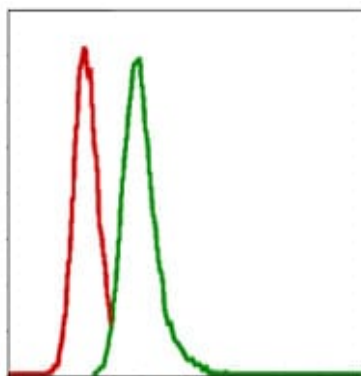


Western blot analysis using G6PD mouse mAb against Hela (1), MCF-7 (2), Jurkat (3) and K562 (4) cell lysate.

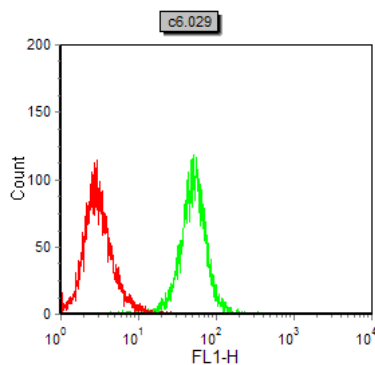
Product Name: G6PD Mouse Monoclonal Antibody
Catalog #: AMM81053



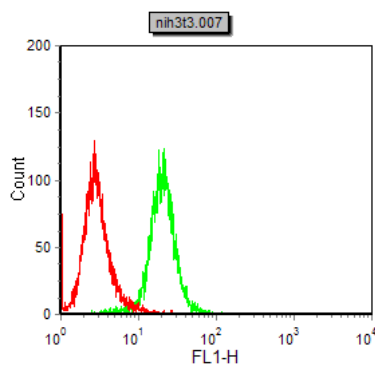
Western blot analysis using G6PD mouse mAb against C2C12 cell lysate.



Flow cytometric analysis of MCF-7 cells using G6PD mouse mAb (green) and negative control (red).



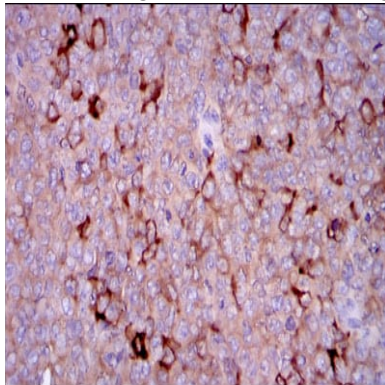
Flow cytometric analysis of C6 cells using G6PD mouse mAb (green) and negative control (red).



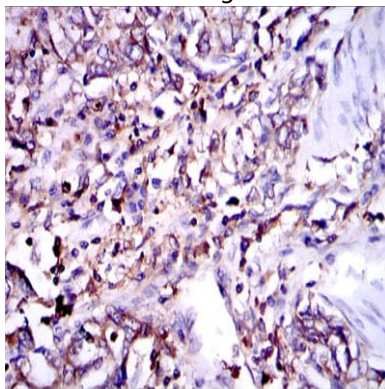
Product Name: G6PD Mouse Monoclonal Antibody
Catalog #: AMM81053



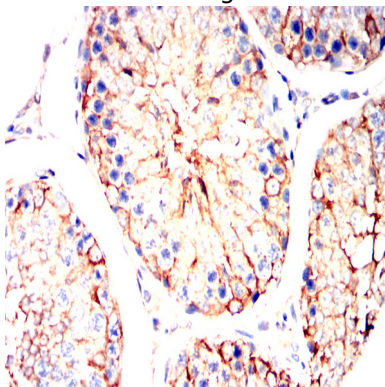
Flow cytometric analysis of NIH3T3 cells using G6PD mouse mAb (green) and negative control (red).



Immunohistochemical analysis of paraffin-embedded human ovarian cancer tissues using G6PD mouse mAb with DAB staining.



Immunohistochemical analysis of paraffin-embedded human stomach cancer tissues using G6PD mouse mAb with DAB staining.



Immunohistochemical analysis of paraffin-embedded Rabbit testicles using G6PD mouse mAb with DAB staining.

Note

For research use only.