

Product Name: KID Mouse Monoclonal Antibody**Catalog #: AMM81044**

For research use only.

Summary

Description	Mouse monoclonal Antibody
Host	Mouse
Application	WB,IHC,ELISA
Reactivity	Human
Conjugation	Unconjugated
Modification	Unmodified
Isotype	Mouse IgG1
Clonality	Monoclonal
Form	Liquid
Concentration	1mg/ml
Storage	Aliquot and store at -20°C (valid for 12 months). Avoid freeze/thaw cycles.
Shipping	Ice bags
Buffer	PBS containing 0.03% sodium azide.
Purification	Affinity Purification

Application

Dilution Ratio	WB 1:500-1:2000,IHC 1:200-1:1000,ELISA 1:5000-1:20000
Molecular Weight	73kDa

Antigen Information

Gene Name	KID
Alternative Names	KIF22; KID; OBP; KNSL4; OBP-1; OBP-2; A-328A3.2
Gene ID	3835.0
SwissProt ID	Q14807
Immunogen	Purified recombinant fragment of human KID expressed in E. Coli.

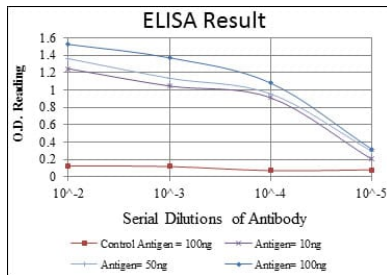
Background

The protein encoded by this gene is a member of kinesin-like protein family. This family of proteins are microtubule-dependent molecular motors that transport organelles within cells and move chromosomes during cell division. The C-terminal half of this protein has been shown to bind DNA. Studies with the Xenopus homolog suggests its essential role in metaphase chromosome

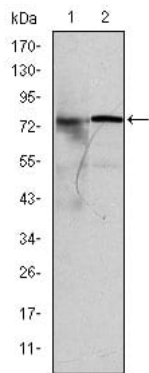
alignment and maintenance.

Research Area

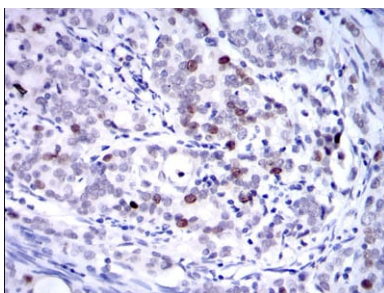
Image Data



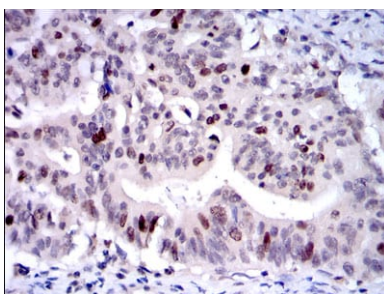
Red: Control Antigen (100ng); Purple: Antigen (10ng); Green: Antigen (50ng); Blue: Antigen (100ng);



Western blot analysis using KID mouse mAb against MCF-7 (1) and HeLa (2) cell lysate.



Immunohistochemical analysis of paraffin-embedded human cervical cancer tissues using KID mouse mAb with DAB staining.



Immunohistochemical analysis of paraffin-embedded human rectum cancer tissues using KID mouse mAb with DAB staining.